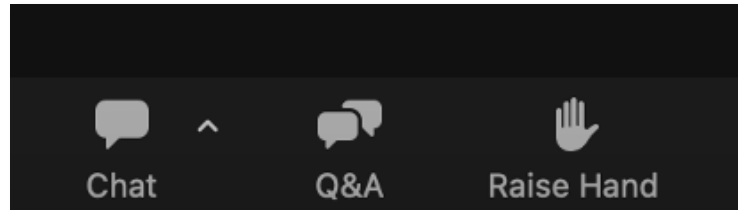




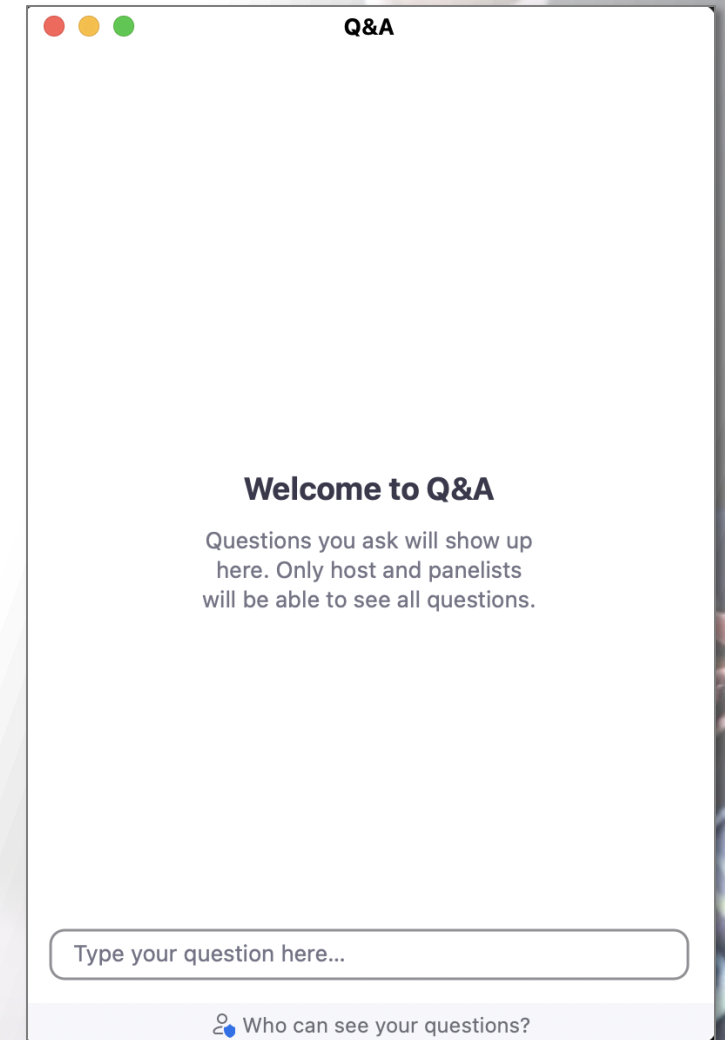
# Use Live Data from Power BI in Microsoft 365 Apps

# Questions?

Click Q&A at the bottom of your screen

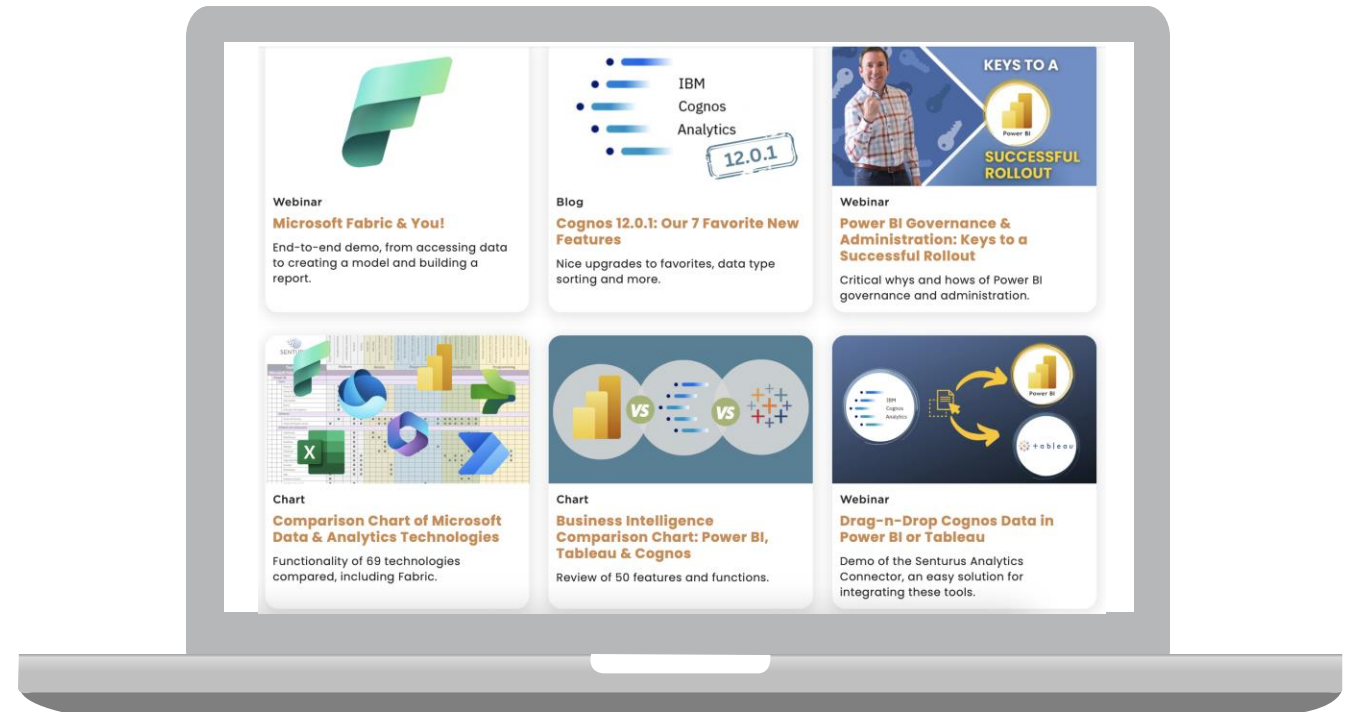


Submit questions in this section



# To obtain this presentation

Visit the Knowledge Center on the Senturus website to download this presentation and explore other assets.



[senturus.com/resources](https://senturus.com/resources)

# Agenda

- Introductions
- Discussion of what can be connected
- Demo
- Senturus overview and additional resources
- Q&A



# Introduction

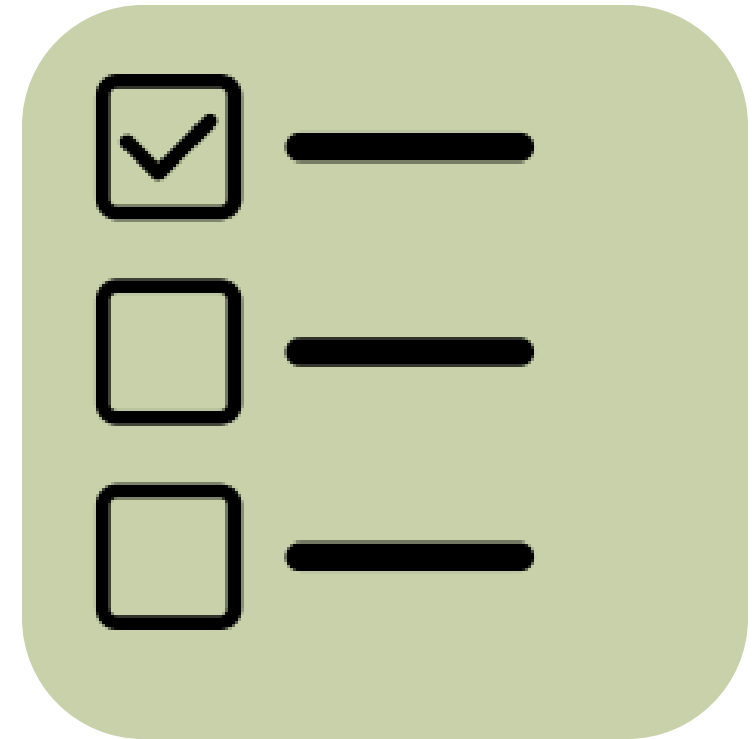
Pat Powers

BI Consultant And Trainer  
Senturus, Inc.

# Poll #1

Which apps are you interested in integrating with Power BI? (select all that apply)

- SharePoint
- Teams
- Excel
- PowerPoint
- Power Automate/Power Apps
- Other



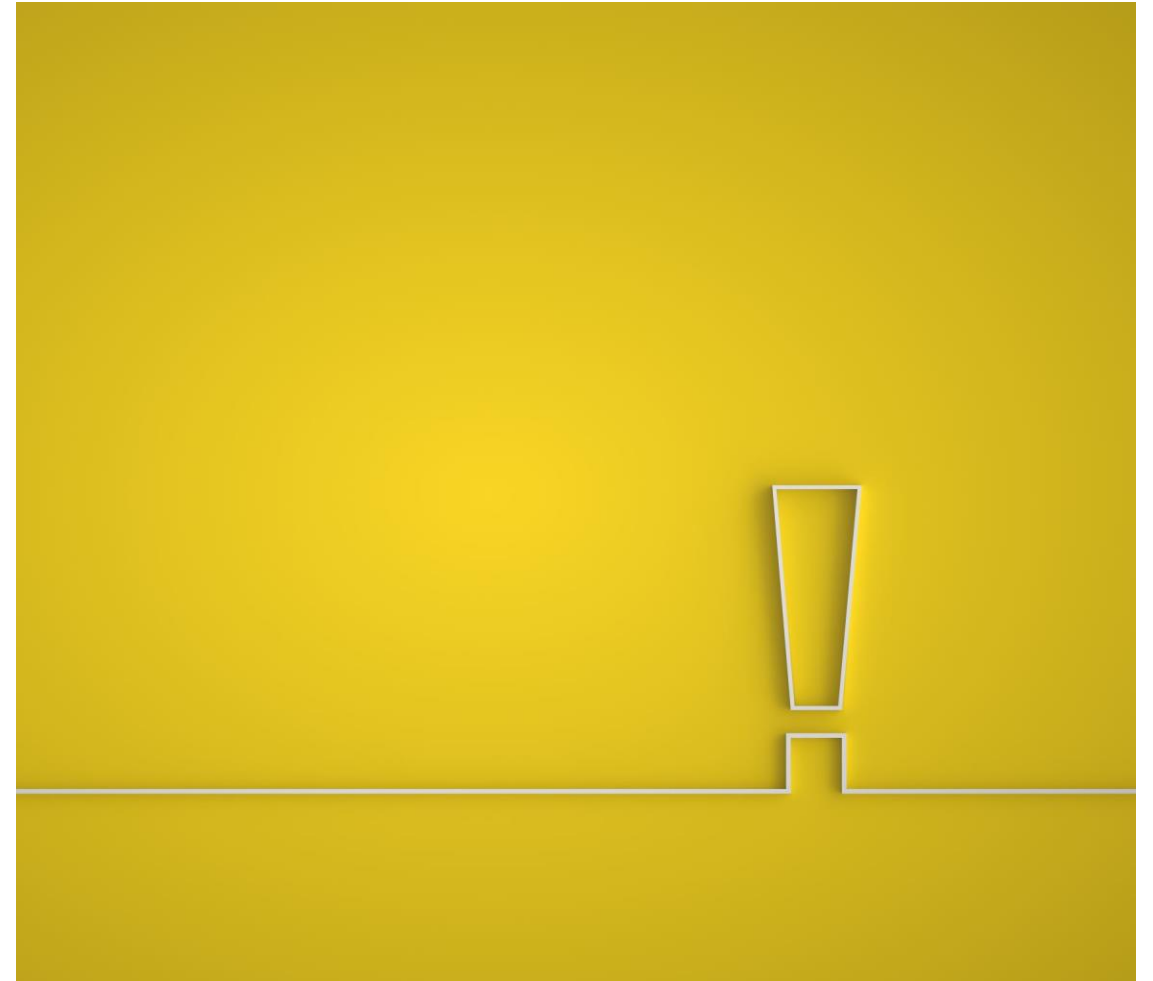
A green rounded rectangle containing three rows of checkboxes and horizontal lines. The top row has a checked checkbox and a horizontal line. The middle row has an unchecked checkbox and a horizontal line. The bottom row has an unchecked checkbox and a horizontal line.

# Integration overview



# Static reporting and you!

- Reporting isn't limited to a single point of ingestion
- Reports need to be shared and distributed
- How do we get it to all the right people and tools?





# The problem of static

- Static reports are just that – static
- Data is dynamic and changes rapidly
- Out of date reporting means out of date business
- Not everyone uses the same tools to view and share
- Licensing issues, security issues, the list goes on!



# Making it live



Bring data and analytics to the people



Open up new avenues of discussion



Adapt to user's tools to create high level of adoption



Expand the audience of reporting



Make decisions faster and smarter!

# Available connections

All the standard  
O365 apps are  
available

- Excel
- PowerPoint
- SharePoint
- Teams

And some you may  
not have  
considered

- Word
- OneNote

# Pros and cons



## Pros

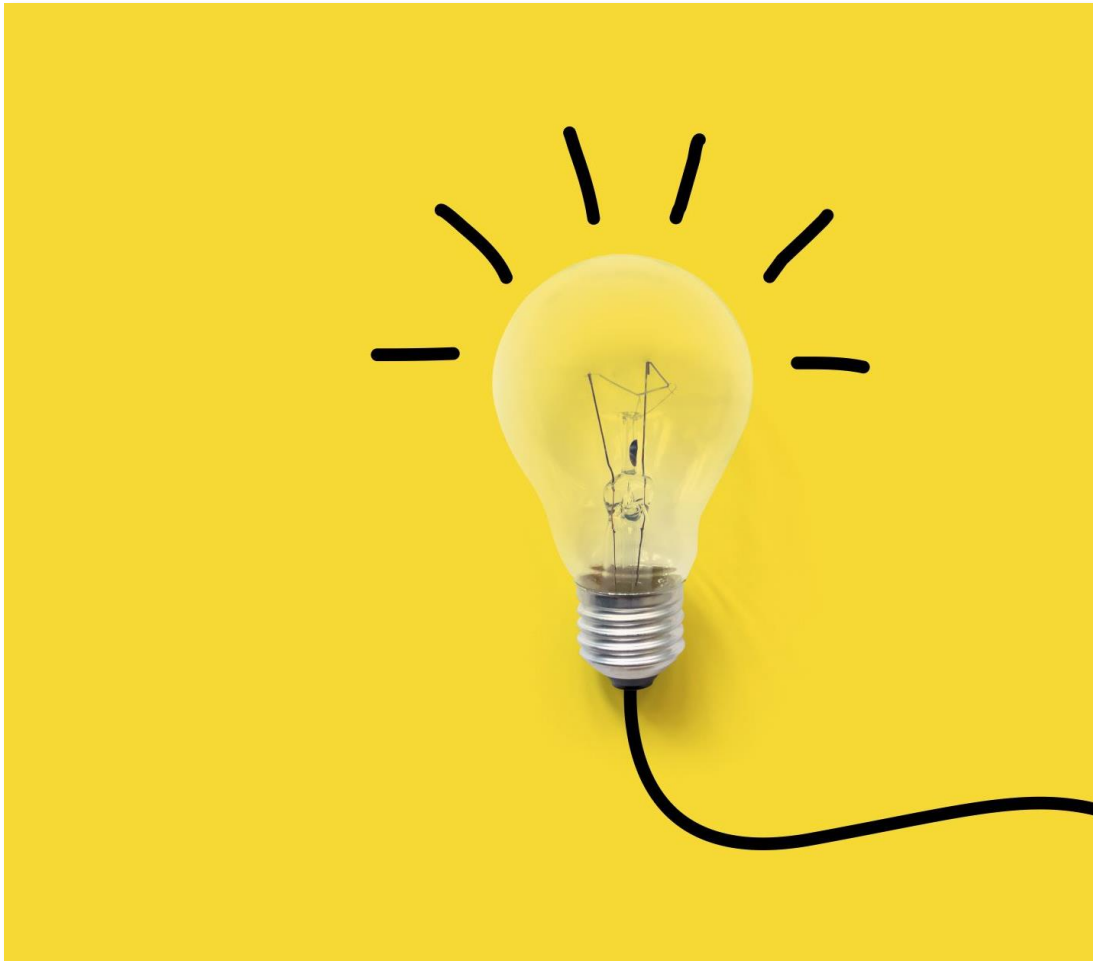
- Immediate access to reporting in all tools for everyone
- Faster access to data from anywhere



## Cons

- Additional maintenance and IT concerns
- Report developers need to consider usage

# Prepping for integration



Things to consider before rolling out to enterprise:

- Which tools?
- Design discussions
- Report size
- Licensing
- IT needs

# Best practices



- Report development aesthetics have more meaning as something may look very different embedded in another tool
- Consider any licensing issues when sharing to other products
- Watch out for needed add-ons for some of the MS products

# Tips and tricks

## Tip 1



Deliver to your audience needs, not technical needs

## Tip 2



Keep reports small, tight and well designed for all device types

## Tip 3



Match the right technology with the user's skill and standard tools

# Integration demo



# In summary

- Power BI can be used and shared with everyone in the organization
- Not all users consume in the same way
- Take advantage of existing platforms users are comfortable with to truly spread the analytics knowledge
- You may find new and interesting ways to share data with more people!

# Resources

## Workshop

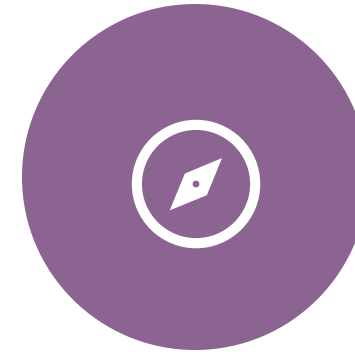


Microsoft Fabric  
In-Person Workshop

**Sign up at:**

[Senturus.com/events/in-person-workshop-microsoft-fabric/](https://Senturus.com/events/in-person-workshop-microsoft-fabric/)

## BI Tools Guide



Comparison of Microsoft  
Analytics Tools

**Download at:**

[Senturus.com/MSchart](https://Senturus.com/MSchart)

# Additional resources

## Unbiased product reviews



## Technical tips



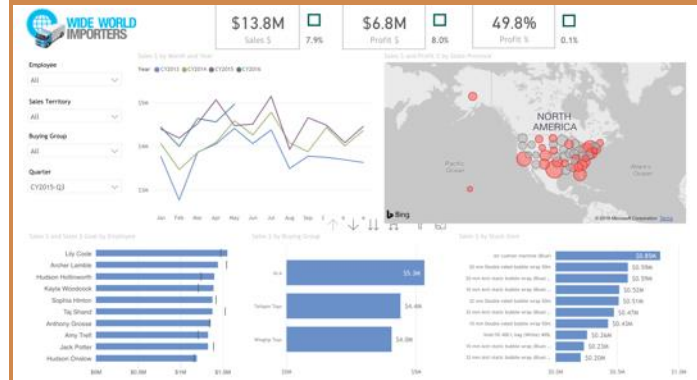
## Insider viewpoints



## More on this subject



## Product demos



## Upcoming events



# Upcoming events

## **AI in BI: Impacts to Power BI, Cognos & Tableau**

Thursday, February 8, 11am PT (2pm ET)

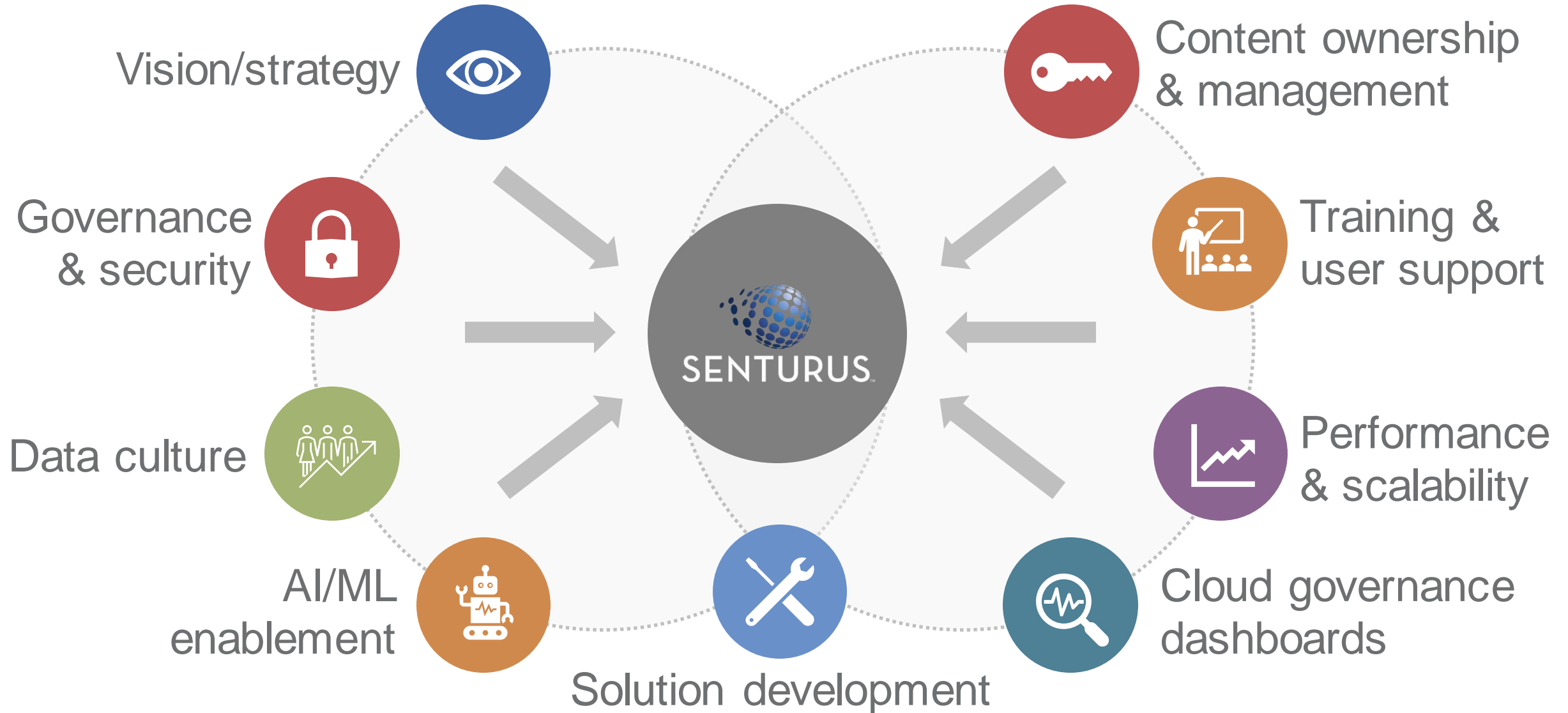
## **In-Person Workshop: Microsoft Fabric**

Date and location to be announced

**Register at [senturus.com/events](https://senturus.com/events)**



# Modern BI: accelerated & accessible



# A long, strong history of success

23 years

1400+ clients

3000+ projects

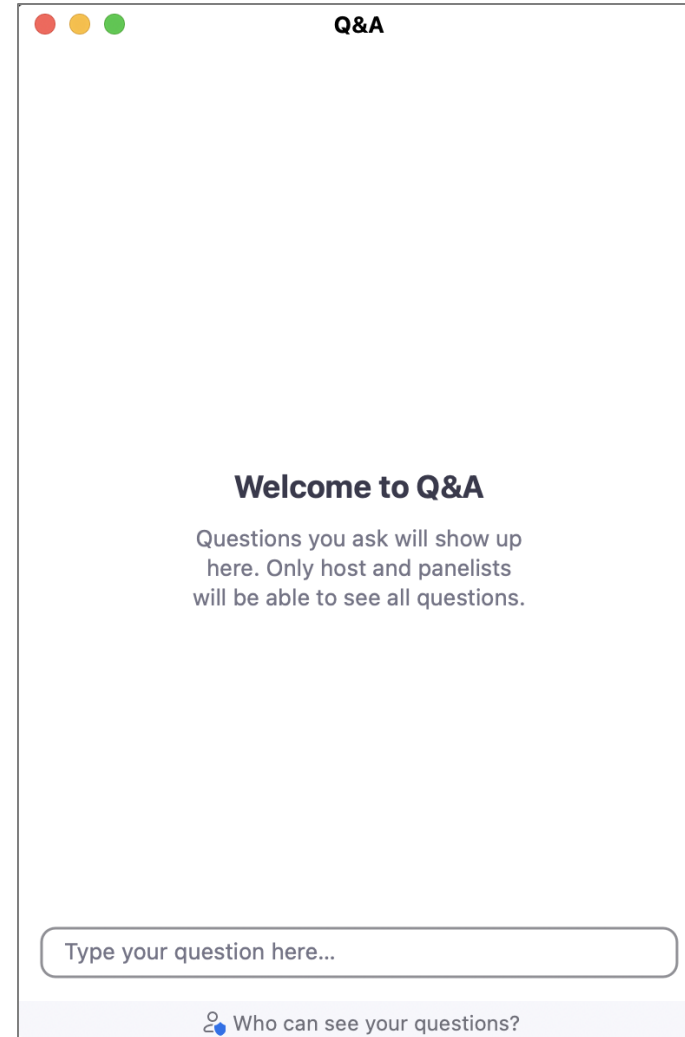


# Q & A

If your question or issue is broader than what we can answer today, contact us at:

**info@senturus.com**

and we will set up a free consultation.

A screenshot of a web application interface for a Q&A session. The window has a title bar with three colored circles (red, yellow, green) and the text "Q&A". The main content area contains a heading "Welcome to Q&A" followed by a paragraph: "Questions you ask will show up here. Only host and panelists will be able to see all questions." At the bottom, there is a text input field with the placeholder "Type your question here..." and a button with a person icon and the text "Who can see your questions?".

Q&A

**Welcome to Q&A**

Questions you ask will show up here. Only host and panelists will be able to see all questions.

Type your question here...

Who can see your questions?

# Thank You



## SENTURUS

---

[www.senturus.com](http://www.senturus.com)

888-601-6010

[info@senturus.com](mailto:info@senturus.com)

© 2024 by Senturus, Inc. This presentation may not be reused or distributed without the written consent of Senturus, Inc.