



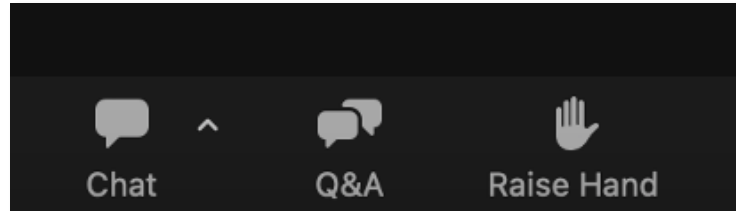
SENTURUS

Microsoft Fabric & You!



Questions?

Click Q&A at the bottom
of your screen



Submit questions
in this section

Q&A

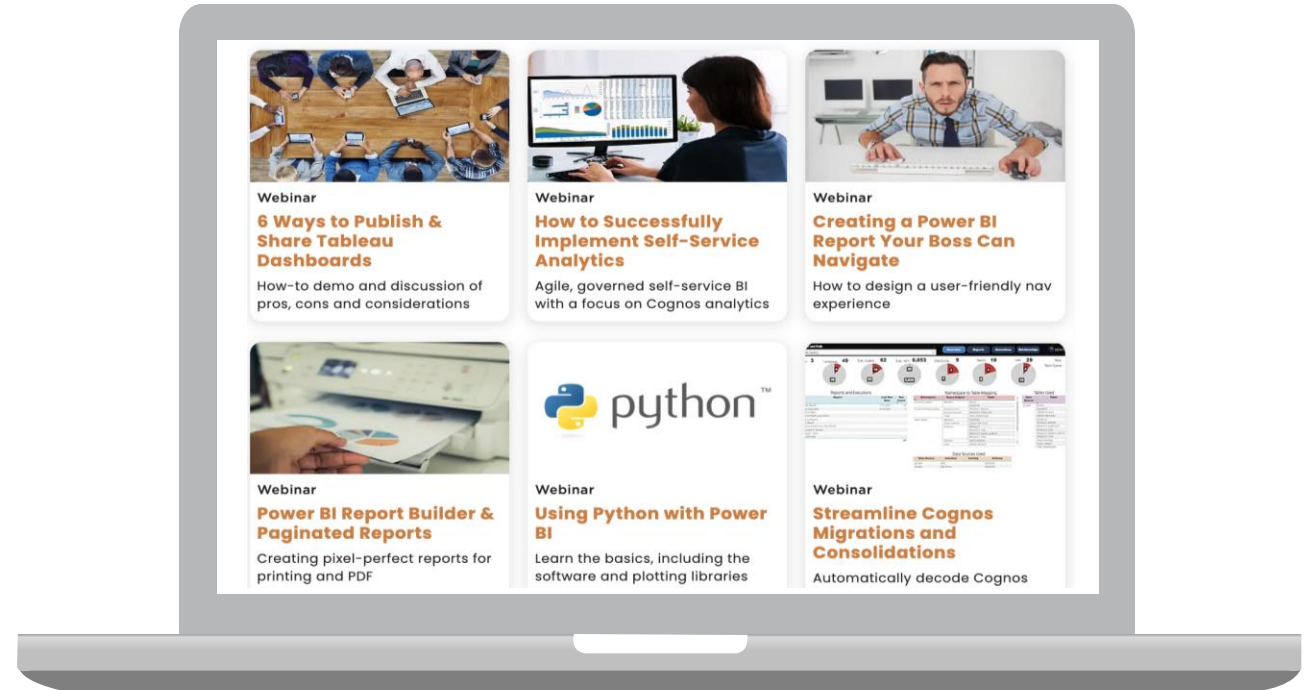
Welcome to Q&A
Questions you ask will show up
here. Only host and panelists
will be able to see all questions.

Type your question here...

Who can see your questions?

To obtain this presentation

Visit the Knowledge Center on the Senturus website to download this presentation and explore other assets.



senturus.com/resources

Agenda

Introductions

Foundations of Fabric

Demo

Licensing and costs

Senturus overview and additional resources

Q&A



Introductions

Pat Powers

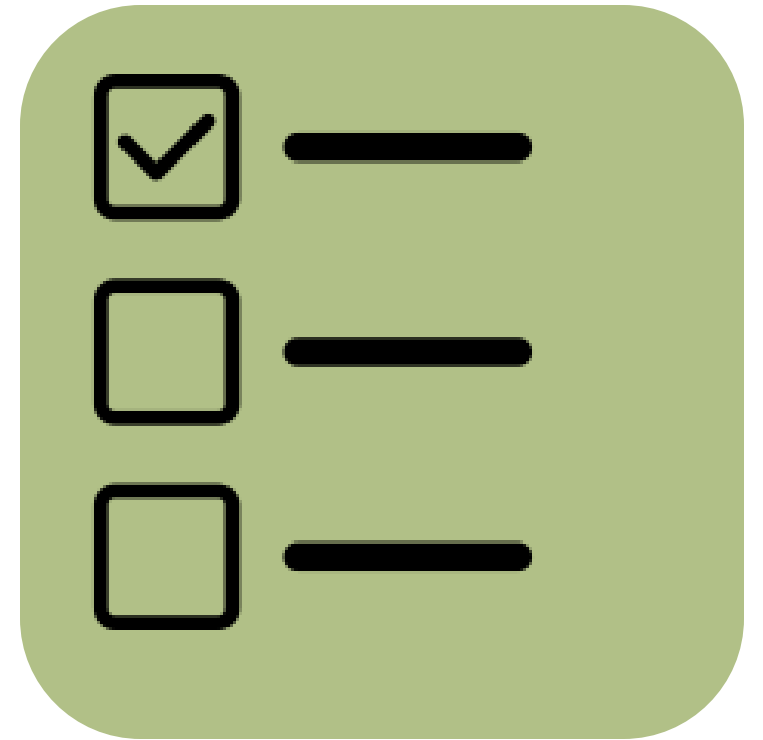
BI Consultant and Trainer
Senturus, Inc.



Poll #1

When do you expect to start using Fabric?

- Within the next 12 months
- More than 12 months
- No plans
- Already enabled



A green rounded rectangle containing three rows of checkboxes and horizontal lines. The first row has a checked checkbox followed by a horizontal line. The second row has an unchecked checkbox followed by a horizontal line. The third row has an unchecked checkbox followed by a horizontal line.

<input checked="" type="checkbox"/>	—
<input type="checkbox"/>	—
<input type="checkbox"/>	—

Fabric overview

What is Fabric?



Foundations of Fabric



Brings together all data and analytics tools in the organization



Full integration of Microsoft technologies laying the foundation for modern machine learning

Fabric integration



Azure
Data
Factory



Azure
Synapse
Analytics



Power BI

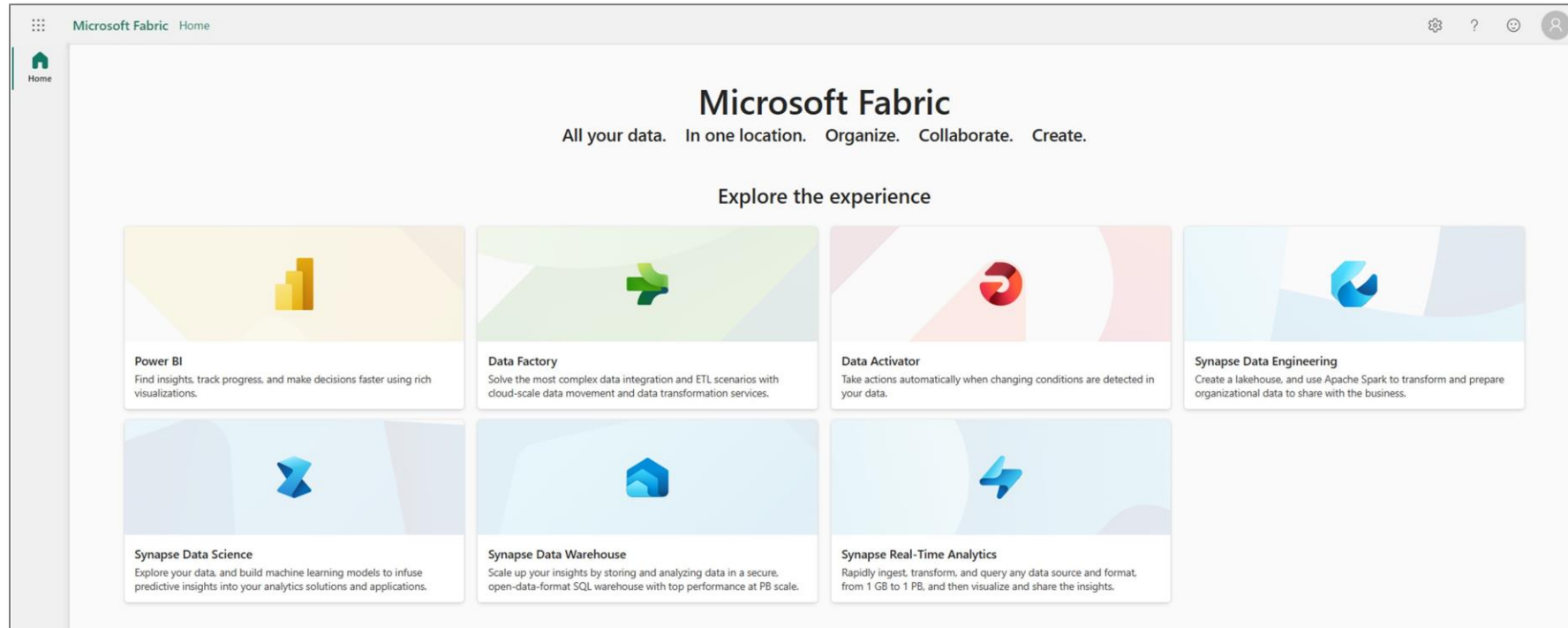


Co-Pilot
AI



Synapse
Data
Warehouse

Unified environment



Central suite of experiences



Everything working together seamlessly



Simplify building data models



Drive change for your organization

Unifying data



Fabric provides a new lakehouse experience

A single foundation for all your analytical needs

Eliminate the struggle of ingesting, preparing and sharing data

Unifying data

Connectors save data in
Delta Lake Parquet open
standard



Improved performance
while maintaining full delta
lake compliance

New data source
connections including
shortcuts



Unifying data

- 01 Transformation logic can be written in a notebook and run in a Spark session
- 02 Data moves from files section and transforms it
- 03 It is then written as Delta Lake tables in the Tables section

Fit for purpose modeling

Create models



Navigate to the SQL endpoint in the lakehouse

Write SQL



Write familiar SQL queries and create views across databases

Visual queries



Use the visual query builder for a fast, low code approach

Fit for purpose modeling



Every lakehouse has a built-in relational database and data model with zero configuration for enabling



Create relationships and measures



Changes can be viewed real-time when collaborating

Fit for purpose modeling

Cells run instantly with no
configure compute

Fabric supports live pools with
compute already provisioned

Results in instant productivity



Scaling analytics

Datasets are automatically created when the lakehouse is created

This same dataset is kept in synch and optimized with no intervention

Scaling analytics

New Direct Lake mode in Fabric allows for streamlined performance

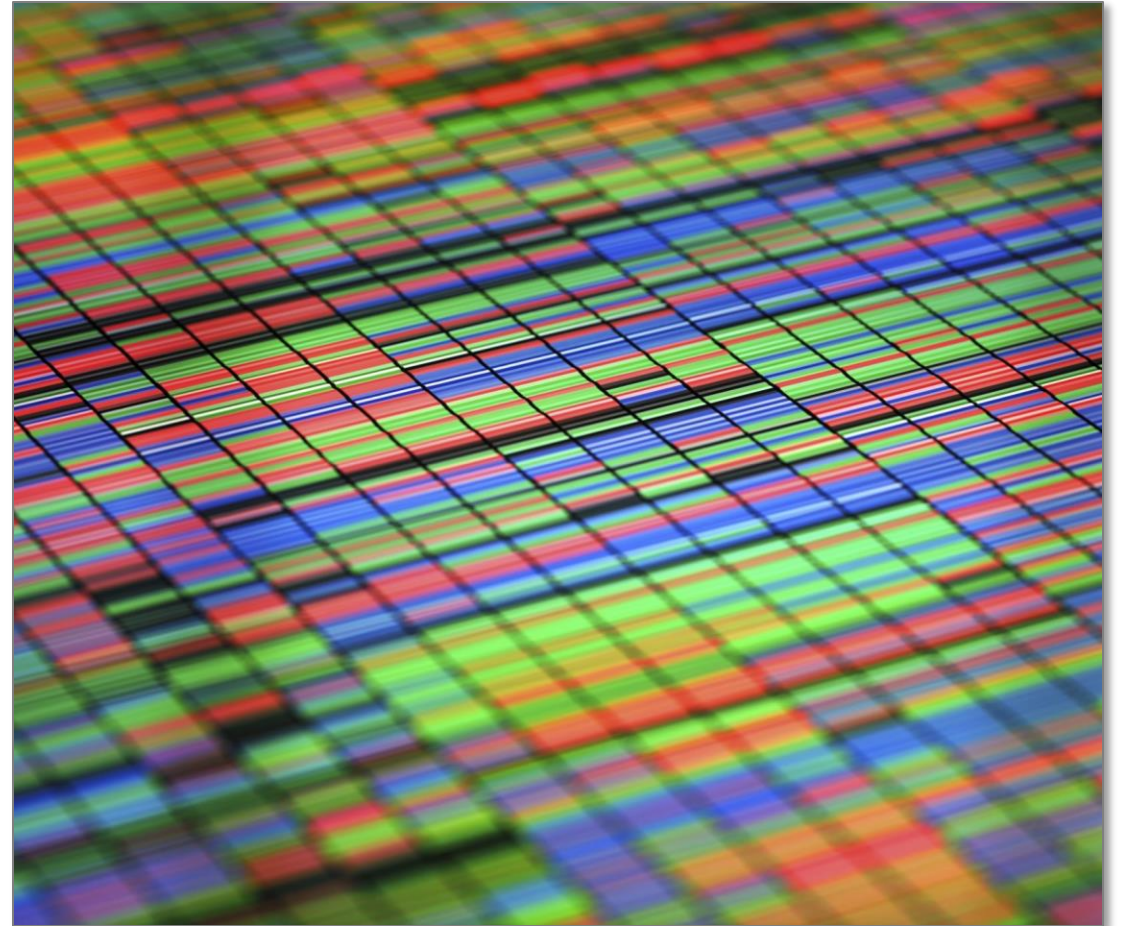
Supports petabytes of data

No complex steps needed

Streaming analytics are fully integrated to allow quick adding of new data

Scaling analytics

- From the Real-Time Analytics pane, quickly create a KQL database
- A data connection can be created to streaming data
- Fabric reads from event hubs and ingest directly to the KQL database



Scaling analytics



This streaming data can be queried and added to an existing analytics solution



Ad hoc queries of petabytes of data are possible



Resulting datasets and reports can be quickly shared

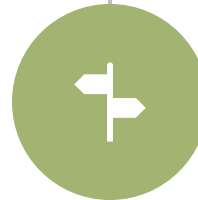
Modern enterprise data warehouse

- With Fabric, you can build an enterprise data warehouse without having to provision anything
- Use the Synapse Data Warehouse experience to build a relational layer on top of the lakehouse



Modern enterprise data warehouse

From the data warehouse option select a recommended artifact, sample or tutorial



Name the new data warehouse

No need to configure compute or storage



Modern enterprise data warehouse

01

Start with a new data pipeline using out of the box connectors

02

Connectors allow for linking to on-premise or cloud sources

03

Tables are added automatically in open Delta format for best performance

Fabric demo

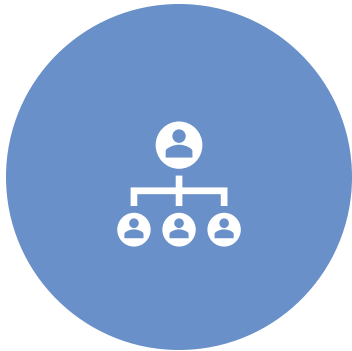


Licensing & Fabric



Fabric components

Tenant



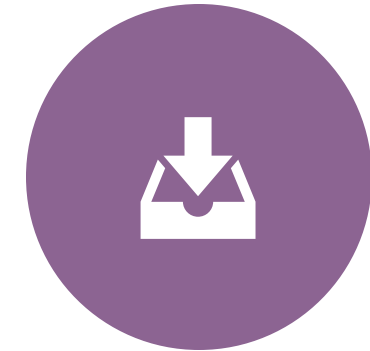
The foundation of a Fabric subscription

Capacity



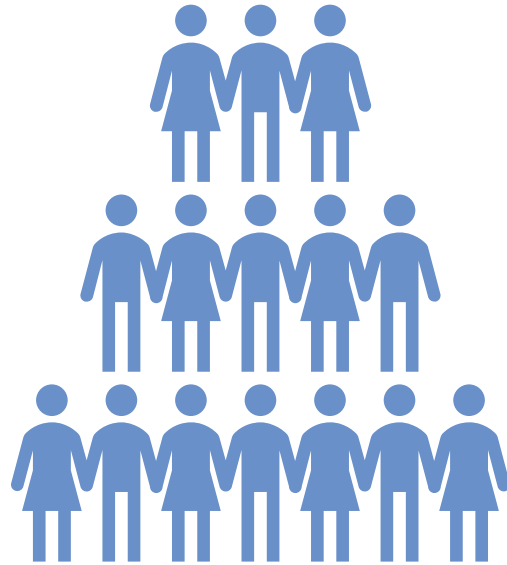
A distinct pool of resources allocated to Fabric

Workspace



Resides in a capacity and is a container for Fabric items

Fabric license types



Organizational
licenses



Individual
licenses

Fabric components

Workspaces can be created or assigned to a Fabric organizational license and in legacy Power BI capacities

Depending on the capacity, workspaces have different capabilities

Capacity license*	User capabilities	Supports Fabric
Shared Capacity. Created by a Pro user in the Power BI service without residing on a capacity.	Use basic Power BI features and collaborate on reports, dashboards, and scorecards.	✗
Microsoft Fabric trial	Create Microsoft Fabric items and collaborate with others in the same Microsoft Fabric trial capacity.	✓
Shared Capacity. Created by a Power BI Premium Per User (PPU) user	Create PPU workspaces and Power BI items. Collaborate using most of the Power BI Premium features, including paginated reports, dataflows, and datamarts.	✗
Power BI Premium Per Capacity (P SKUs)	Create Power BI content. Share, collaborate on, and distribute Power BI and Microsoft Fabric content. To create workspaces and share content you need a Pro or PPU license. To view content, you can use a Free license.	✓
Power BI Embedded Capacity ↗ Azure (A SKUs)	Independent Software Vendors (ISVs) and developers use Power BI Embedded to embed visuals and analytics in their applications.	✗
Microsoft Fabric Capacity (F SKUs)	Create and share Microsoft Fabric content. To create content you can use a Free license, and to share content you need a Pro license.	✓

Individual license varieties

Individual licenses also come in two varieties, Free and Pro

Capabilities	Free	Pro
Access Microsoft Fabric web application	✓	✓
Create Fabric capacity workspaces	✓	✓
Create Pro and Power BI Premium workspaces	✗	✓
Create Power BI items in workspaces other than their "My Workspace"	✗	✓
View Shared Power BI items in Pro workspaces or Fabric Capacity workspaces (where the Fabric Capacity SKU is less than a F64) and where they have a reader role	✗	✓
View Shared Power BI items in Power BI Premium Per Capacity or Fabric Capacity workspaces (where the Fabric capacity SKU is greater than or equal to a F64) and where they have a reader role	✓	✓
Create non-Power BI Fabric items in Fabric / Trial / Power BI Premium capacity workspaces	✓	✓
Share non-Power BI Fabric items	✓	✓

In summary

- Fabric helps your team unify the entire data estate
- Deliver real-time, on-demand analytics to the right stakeholders
- Manage data in one place with a suite of experiences working together seamlessly
- Deliver an integrated, simplified experience for all analytic workloads and users on an enterprise grade data foundation



Resources

Workshop

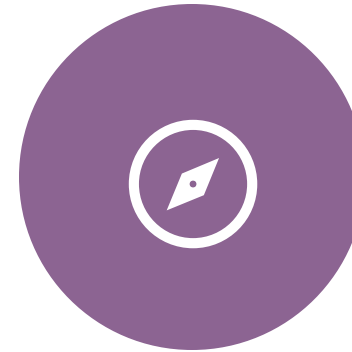


Microsoft Fabric
In-Person Workshop

Sign up at:

Senturus.com/events/in-person-workshop-microsoft-fabric/

2023 BI Tools Guide



Comparison of Microsoft
Analytics Tools

Download at:

Senturus.com/MSchart

Additional resources

Unbiased product reviews



Technical tips



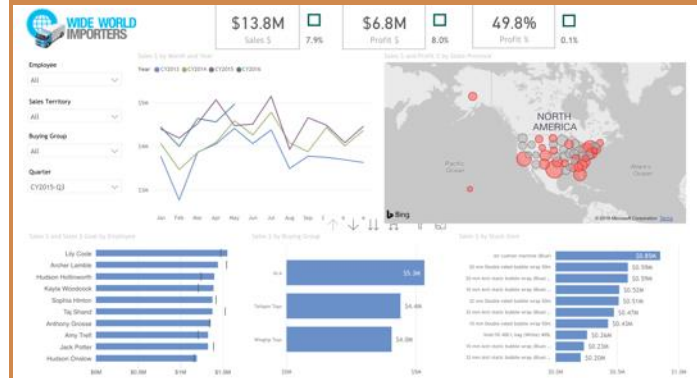
Insider viewpoints



More on this subject



Product demos



Upcoming events



Upcoming events

Q&A: Publishing and Using the Power BI Service

Wednesday, October 18, 11am PT (2pm ET), 60 minutes

Q&A: Cognos 12

Wednesday, November 15, 11am PT (2pm ET), 60 minutes

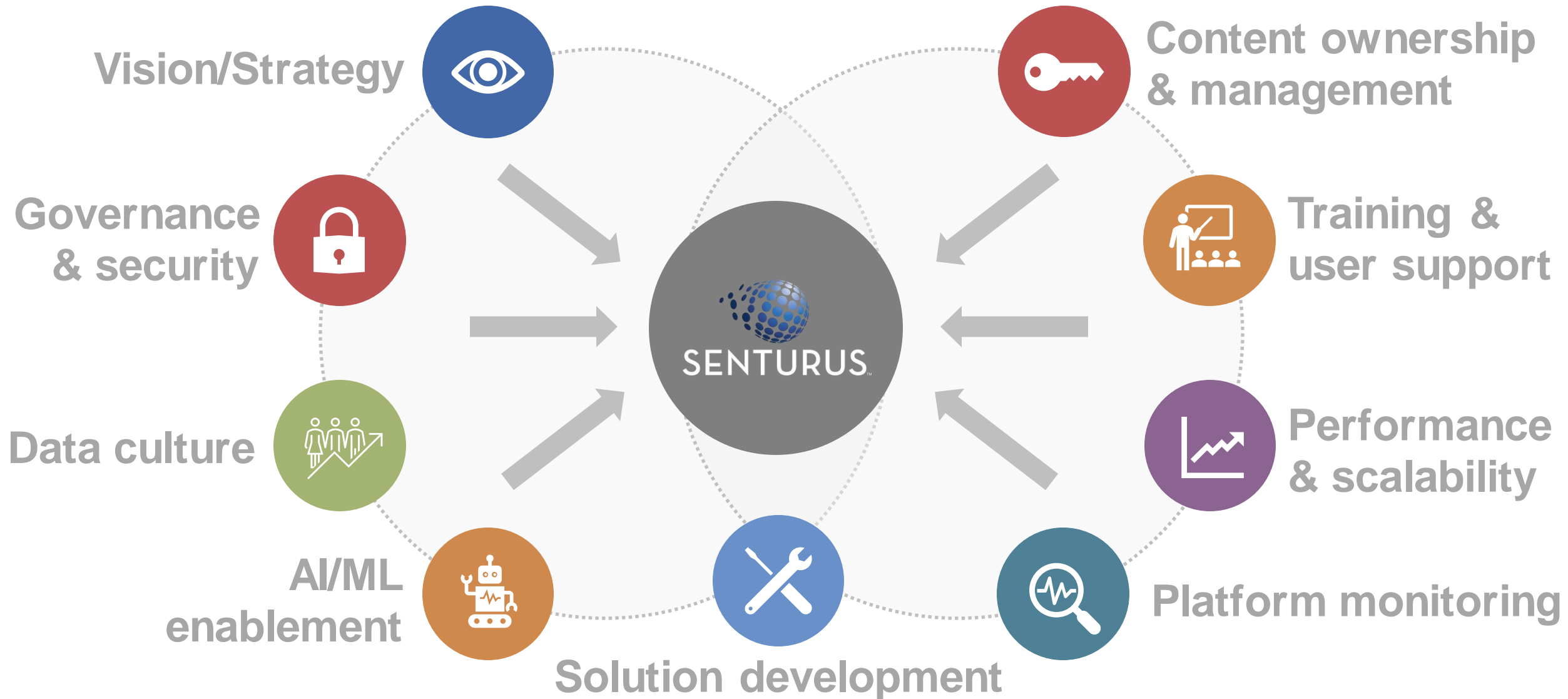
In-Person Workshop: Microsoft Fabric

Date and location to be announced

Register at senturus.com/events



Modern BI: accelerated & accessible



A long, strong history of success

22 years

1400+ clients

3000+ projects



Q & A

If your question or issue is broader than what we are able to answer today, contact us at:


info@senturus.com

and we will set up a free consultation.

Q&A

Welcome to Q&A

Questions you ask will show up here. Only host and panelists will be able to see all questions.

 Who can see your questions?



Thank You



SENTURUS

www.senturus.com

888-601-6010

info@senturus.com

© 2023 by Senturus, Inc. This presentation may not be reused or distributed without the written consent of Senturus, Inc.