



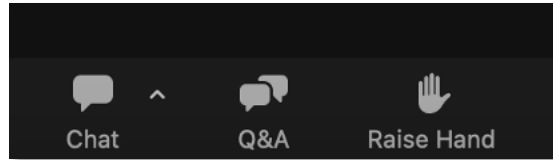
# Tips for Installing Cognos 11.2.4



SENTURUS

# Questions?

Click Q&A at the  
bottom of your screen



Submit questions  
in this section

A screenshot of a mobile application window titled 'Q&A'. The window has a white background and a light gray header bar with three colored dots (red, yellow, green) on the left. The main content area is white and contains the text 'Welcome to Q&A' followed by 'Questions you ask will show up here. Only host and panelists will be able to see all questions.' At the bottom, there is a text input field with the placeholder 'Type your question here...' and a small icon of a person with a plus sign next to the text 'Who can see your questions?'.


# To obtain this presentation

Visit the Knowledge Center on the Senturus website to download this presentation and explore other assets:


[senturus.com/resources](https://senturus.com/resources)

### Topics


- Analytics Connector
- Cross Vendor Comparisons
- Dashboards Reporting & Visualizations
- Data & Cloud Architecture
- Data Prep & Modeling
- Deployments & Performance Optimization
- IBM Analytics & Cognos
- Microsoft Azure & Power BI
- Security, governance & administration
- Snowflake
- Tableau




**Webinar**  
**6 Ways to Publish & Share Tableau Dashboards**  
How-to demo and discussion of pros, cons and considerations




**Webinar**  
**How to Successfully Implement Self-Service Analytics**  
Agile, governed self-service BI with a focus on Cognos analytics




**Webinar**  
**Creating a Power BI Report Your Boss Can Navigate**  
How to design a user-friendly nav experience



**Webinar**  
**Power BI Report Builder & Paginated Reports**  
Creating pixel-perfect reports for printing and PDF



**Webinar**  
**Using Python with Power BI**  
Learn the basics, including the software and plotting libraries



**Webinar**  
**Streamline Cognos Migrations and Consolidations**  
Automatically decode Cognos content and reduce migration time by 90%

# Agenda

Introductions

Cognos Analytics roadmap

Migration and upgrade planning

Installation options

- Cognos components

- Image service

Bulk conversion tool

Audit extension

Senturus overview and additional resources

Q&A

# Introductions



**Todd Schuman**

Practice Lead  
Installations, Upgrades and Optimization  
Senturus, Inc.



**Steve Reed Pittman**

Director  
Enterprise Architecture and Engineering  
Senturus, Inc.

# Poll

Which version of Cognos are you using?

- Before Cognos 10
- Cognos 10
- Cognos 11.0.x
- Cognos 11.1.x
- Cognos 11.2.x

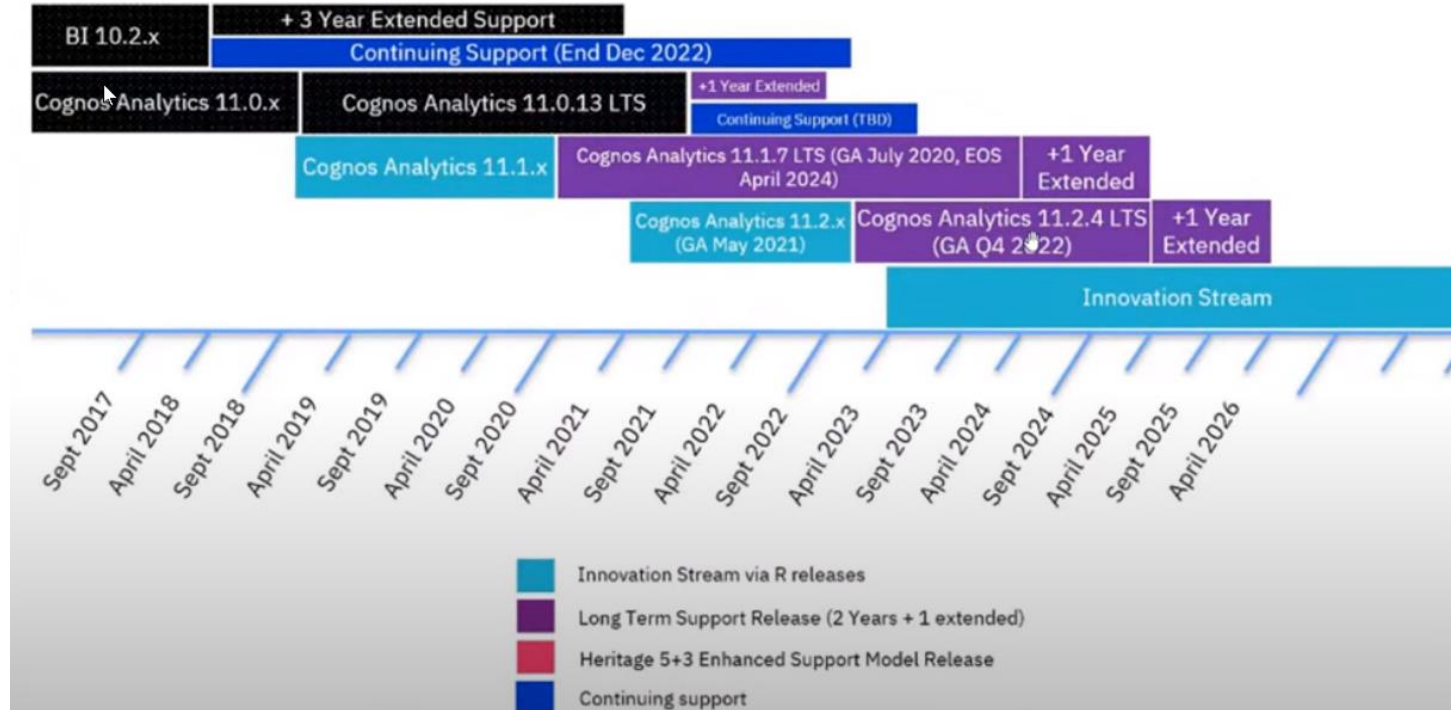
<input checked="" type="checkbox"/>	—
<input type="checkbox"/>	—
<input type="checkbox"/>	—





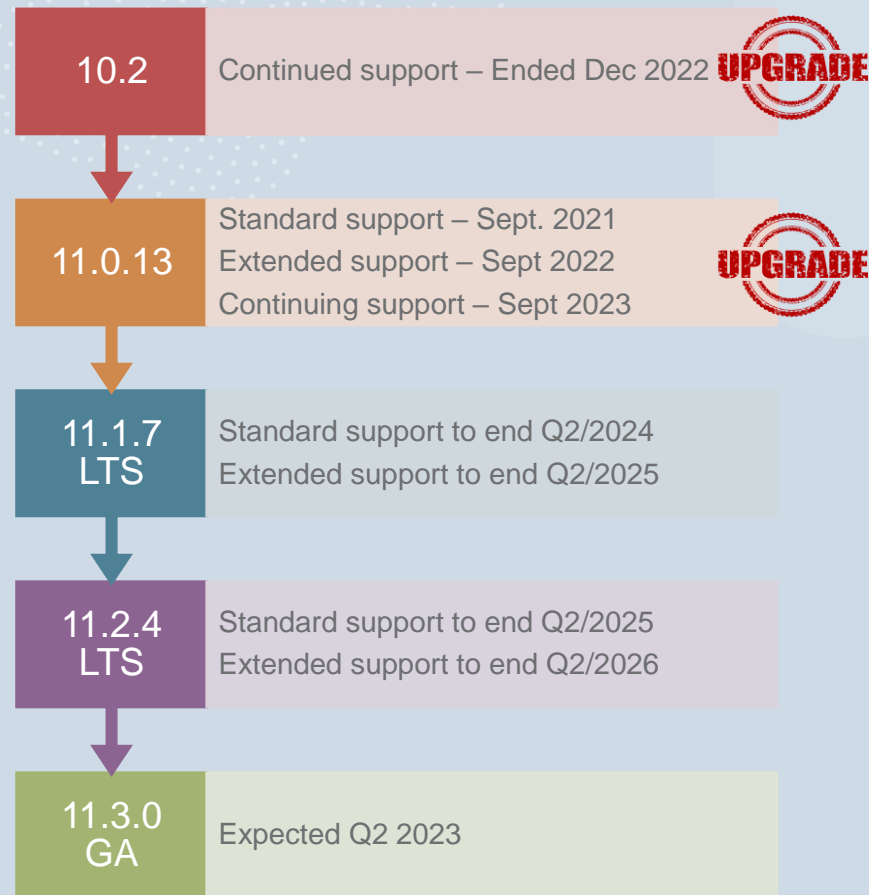
# IBM Cognos release timelines

# Release lifecycle





# Key dates



# Migration planning



# Can I “upgrade” to 11.2.4?

## Cognos 10.2 or earlier

- Fresh install
- Export content
  - Database (preferred)
  - Cognos Full Content Store Export
- New OS
- More hardware
- Database
- Challenges
  - Legacy tool support
  - Interactive Mode/JS

## Cognos Analytic 11.0 or later

- Over the top install OR fresh install
- OS still supported?
- Hardware still enough?
- Database still supported?
- Legacy tool/IE support needed?

1. In-Place Install = applying the newer version over top of the existing version
2. Separate Install = installing the newer version of the software in a separate location
3. Over-the-top Content Store = using existing content store (copy), upon upgrade, new version alters the existing tables
4. New Content Store = using an empty database, letting the new version create its own tables fresh

	In-Place Install Over-the-Top Content Store Upgrade	Separate Product Install + Over-the-Top Content Store Upgrade	Separate Product Install + New Content Store Database
supported	Yes for version 11+ No for version 10 to 11	Yes	Yes
simplicity	Simple	Complexity varies	Complexity varies
Content Store Deployment	Not needed	Not needed	Must import and export content from old to new
speed - installed components	Generally Quick	Varies depending on number of distributed components and complexity of configuration	Varies depending on number of distributed components and complexity of configuration
speed - upgrading of content	The "upgrade content" task can take some time if lots of content	The "upgrade content" task can take some time if lots of content	Export and Import can take some time depending how much content is included in each deployment as does running the content upgrade task
parallel testing	No	Yes, assuming copy of content store database was used	Yes
rollout	All users at once	Options for all users at once or one group at a time	Options for all users at once or one group at a time
cutover	Simple	Many steps to consider, like switching URLs and reconfiguring security	Many steps to consider, like switching URLs and reconfiguring security
rollback	Requires re-instating the backup	Simple - old environment still exists assuming copy of content store was used	Simple - old environment still exists
custom file retention	Remember to edit the preserve.txt file to not overwrite custom folders or directories (v11+)	Must remember to copy/edit files or images after installation	Must remember to copy/edit files or images after installation
my folders	Retained	Retained	Be sure to include in deployment from old to new environments
schedule states	State of schedules retained	Retained, caution on schedules being enabled in both environments at the same time	Be sure to include in deployment from old to new environments, caution on schedules being enabled in both environments at the same time
install path	Sometimes the install path changes for the newer version. It shouldn't cause any issues. Rather, some installation purists like to have the proper, clean install folder structure in place.	Clean, fresh install	Clean, fresh install
Sizing considerations	Leverages existing environment.  Should consider sizing increases if anticipating greater self service behaviors or if new features were introduced in the next version	Must support dual environments and testing efforts.  Should consider sizing increases if anticipating greater self service behaviors or if new features were introduced in the next version	Must support dual environments and testing efforts.  Should consider sizing increases if anticipating greater self service behaviors or if new features were introduced in the next version
human error potential	Less	More manual steps equal more potential for error	More manual steps equal more potential for error
ongoing development during upgrade project	None - all changes captured upon upgrade	Must have plan in place to deal with this. E.g Freeze new development; import changes often, etc	Must have plan in place to deal with this. E.g Freeze new development; import changes often, etc



# Hardware/software prerequisites for 11.2.4

- OS
  - Windows 2012, 2016, 2019, 2022
  - RHEL 7, 8, 9
  - SUSE 12, 15
  - Ubuntu 16.04, 18.04
  - AIX 7.1, 7.2, 7.3
- CPU
  - 4 CPU (minimum)
- RAM
  - 32GB (minimum)

\* Recommend a sizing exercise for more precise tuning



# Content Store Database Options (11.2.4)

- Azure SQL database
- DB2 – 11.5, 12.1,
- Informix –12.1, 14.1
- SQL Server 2014, 2016, 2017, 2019
- Oracle – 18c,19c, 21c



# Supported browsers

- Edge
- Chrome
- Safari
- Firefox ESR

**\* Not Supported: Internet Explorer**





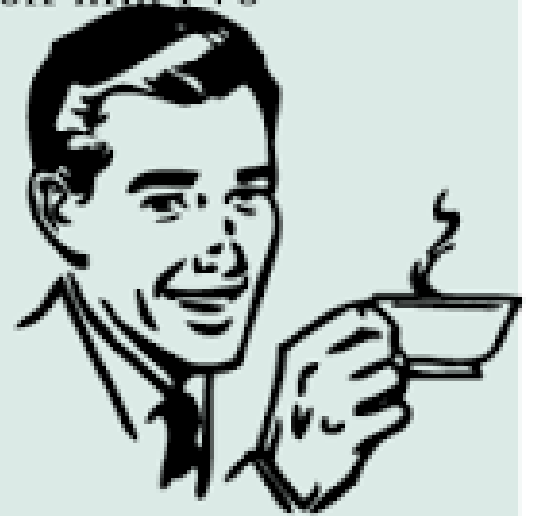
# Backups

- Cognos databases (Content, Audit)
- Cogstartup.xml (Export)
- Images
- Custom JS/WAR
- Preserve.txt
  - [Install Dir]\Configuration\Preserve

# Installation options

---

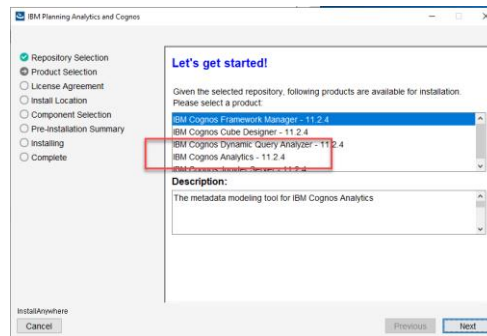
After I drink coffee I show my empty mug  
to the IT guy and tell him I've  
successfully  
installed Java.  
He hates me.



**ROTTEN** **neCARDS** MEMES

# Installations

- 3-4 files needed
  - Installer
  - Server.zip
  - Client.zip (optional)
  - Jupyter.zip (optional)
- Always use installer
  - Don't unzip files
- Install now scans directory for zip files
  - No longer need to browse to files
- Transformer
  - Standalone install

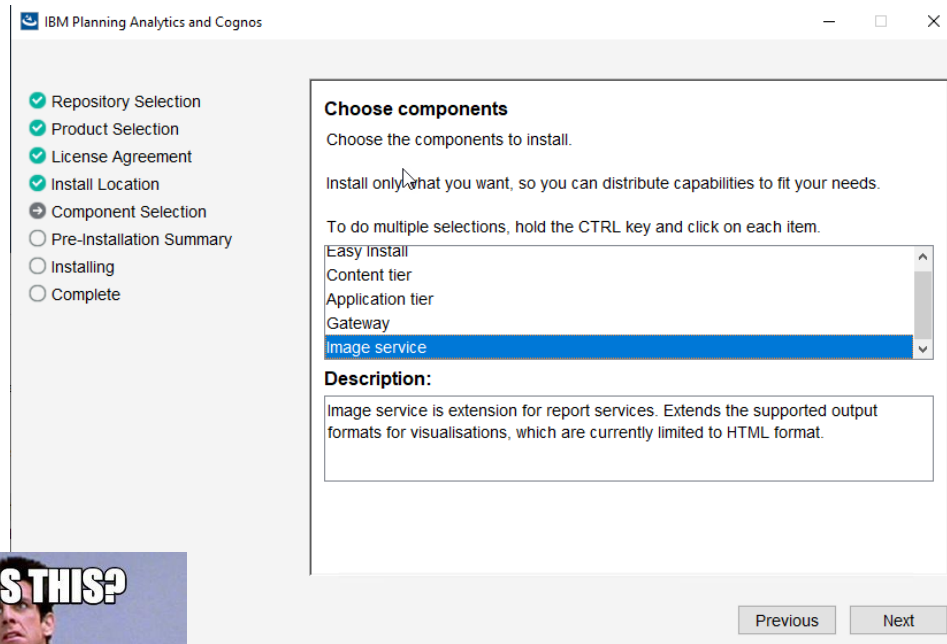


This PC > Windows (C:) > Cognos Software >				
<input type="checkbox"/>	Name	Date modified	Type	Size
	ca_srv_win64_11.2.4.zip	1/3/2023 3:33 PM	Compressed (zipped)...	7,032,013 KB
	dlngr.pro	1/3/2023 3:33 PM	PRO File	5 KB
	ca_jupyter_win_11.2.4.zip	1/3/2023 3:31 PM	Compressed (zipped)...	3,462,741 KB
	ca_client_MP_11.2.4.zip	1/3/2023 3:30 PM	Compressed (zipped)...	1,613,370 KB
	ca_instl_win_3.6.39.exe	1/3/2023 3:29 PM	Application	173,872 KB

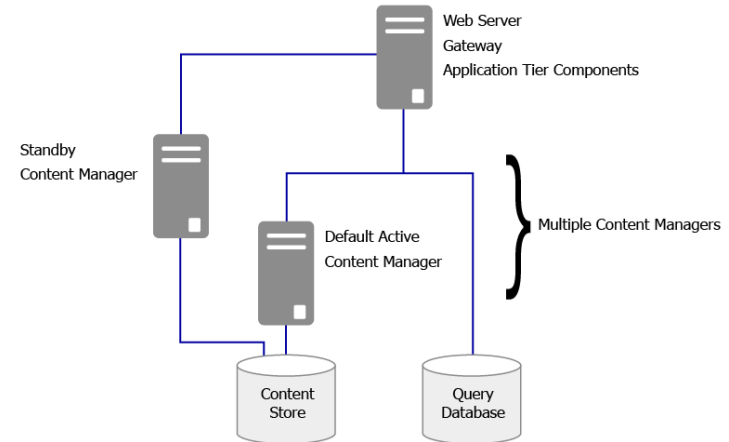
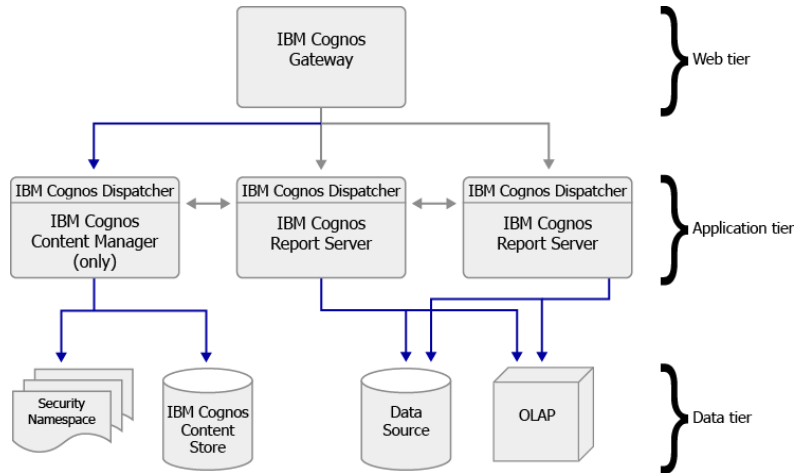


# Install Cognos components

- Easy install
  - Don't use this anywhere but sandbox environment
- Content tier
- Application tier
- Gateway (optional)
- Image service (optional)

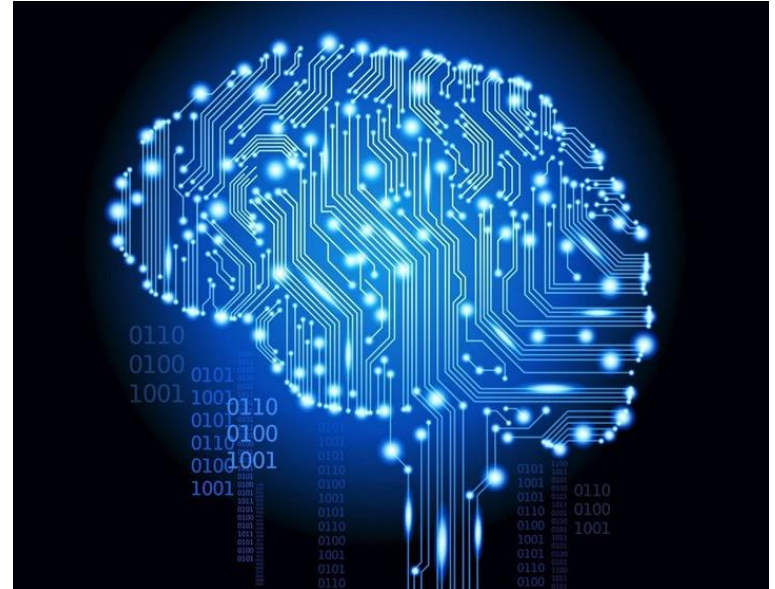


# Cognos architecture – single server vs. tiered



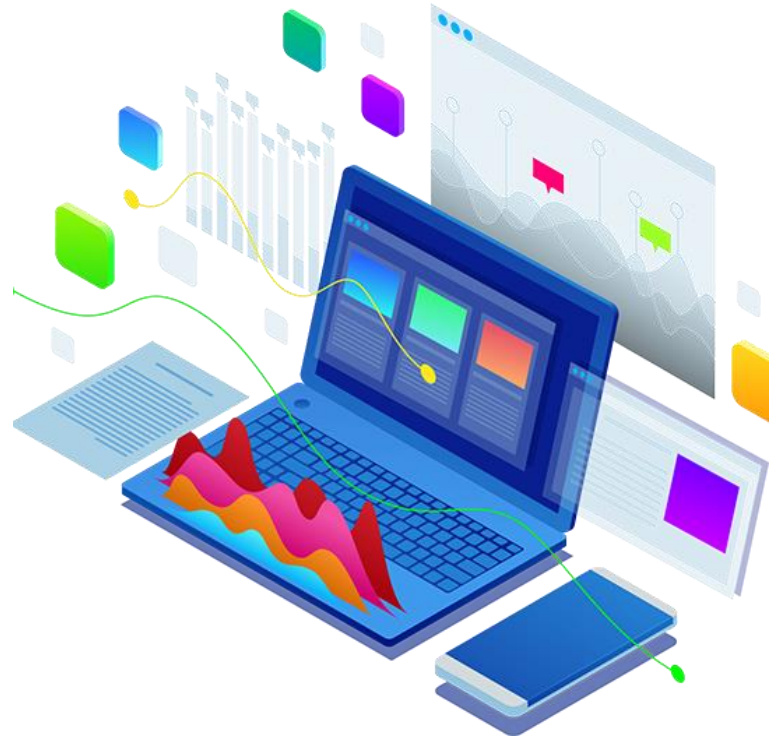
# Content Manager

- “Brain” of Cognos
- Connects to Content Store DB
  - SQL, Oracle, DB2, etc.
- Connects to authentication providers
  - AD, LDAP, OpenID
- Content Manager = Service
- Content Store = set of database tables used by Content Manager to store Cognos application data



# Dispatcher

- Cognos workhorse
  - Reporting
  - Dashboarding
  - Ad hoc query/self service
  - Scheduling
- Connects to “Data Sources” to pull data needed to display report outputs



# Gateway

- Needed for SSO/Kerberos/third-party portal integration
- Comes with scripts
  - [install dir]\cgi-bin\templates
- IIS
  - ARR (Application Request Routing)
  - Windows authentication
- Apache





# Image service

- Report service extension
- Allows visualizations that were previously HTML only to render in PDF/XLS
- Viz
  - Map (Tiledmap using MapBox API)
  - Donut
  - Treemap
  - Bullet
  - Marimekko

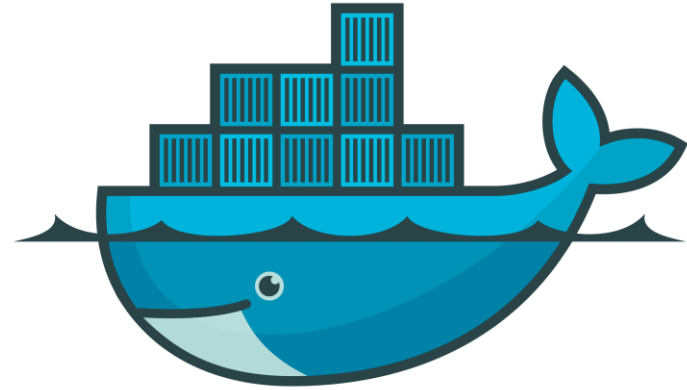
## Visualization gallery

The screenshot displays the 'Visualization gallery' interface. At the top, there is a search bar labeled 'Find' and a dropdown menu showing '11.1 visualizations'. Below this is a grid of 20 visualization icons, each with a label: Area, Box plot, Bubble, Bullet, Clustered bar, Clustered column, Clustered combi..., Floating bar, Floating column, Gantt, Heat map, Hierarchical pac..., Line, Map (highlighted), Marimekko, Network, and a final icon labeled 'Network (1)'. A sidebar on the left lists categories and counts: All (35), Area (4), Boxplot (1), Bubble (5), Bullet (1), Column (8), Combination (2), Custom (1), Dial (1), Heat map (1), Line (3), Map (1), Marimekko (1), and Network (1). On the right, a detailed view of the 'Map' visualization is shown, including a world map icon and descriptive text: 'Map: Interactive map for geospatial analytics. Use this visualization to perform geospatial analysis with fill and point maps.' Below this, the 'Data' section lists 'Regions' (categories only (1), values only (1), categories or values (0)), 'Points' (categories only (1), values only (2), categories or values (0)), and 'Latitude/Longitude' (categories only (1), values only (2), categories or values (2)). At the bottom, a 'Tags' section shows 'Map'. A red box highlights a warning message: '⚠ This visualization supports only HTML output.'

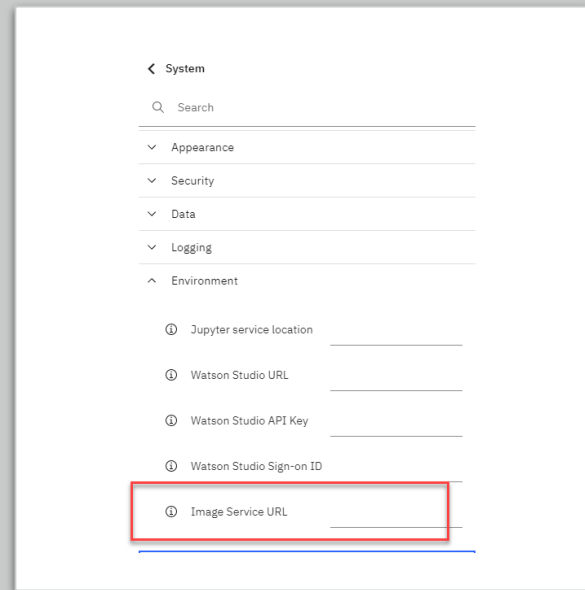
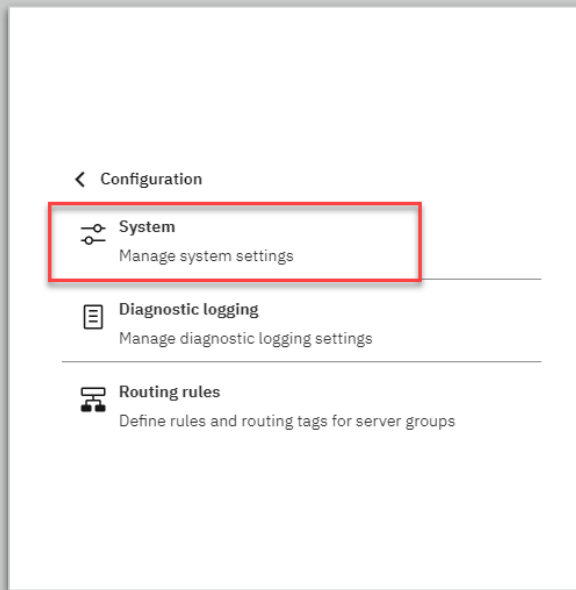
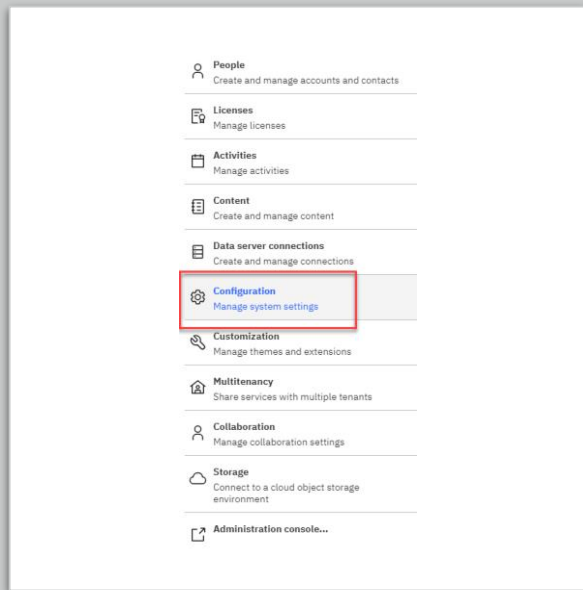
# Install/configure Image service

---

- Windows
  - Docker (Linux Containers)
- LINUX
  - Docker CE
    - Ubuntu
    - CentOS
  - Docker Engine
    - Red Hat
  - podman 4.1.1



docker



# Configure URL in portal

# Legacy content: time to say goodbye

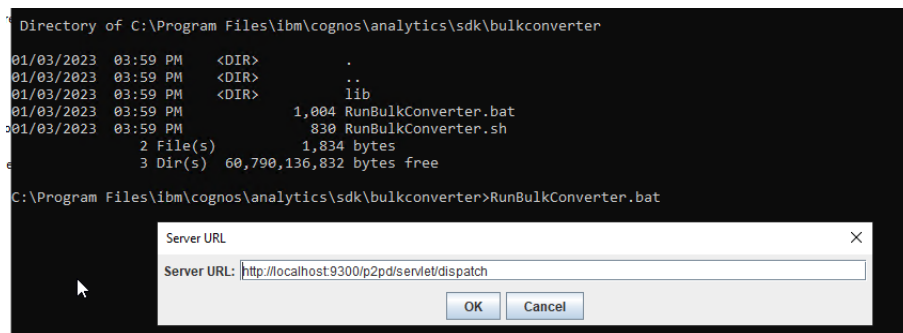
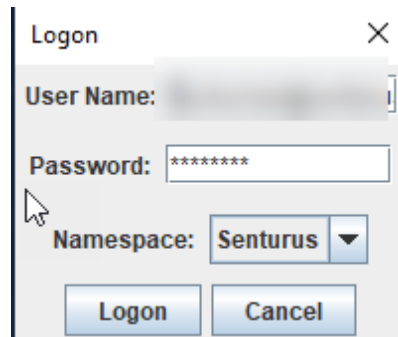
- Query Studio
- Analysis Studio
- Workspace

**\* Announced deprecation in 2016**



# Bulk converter

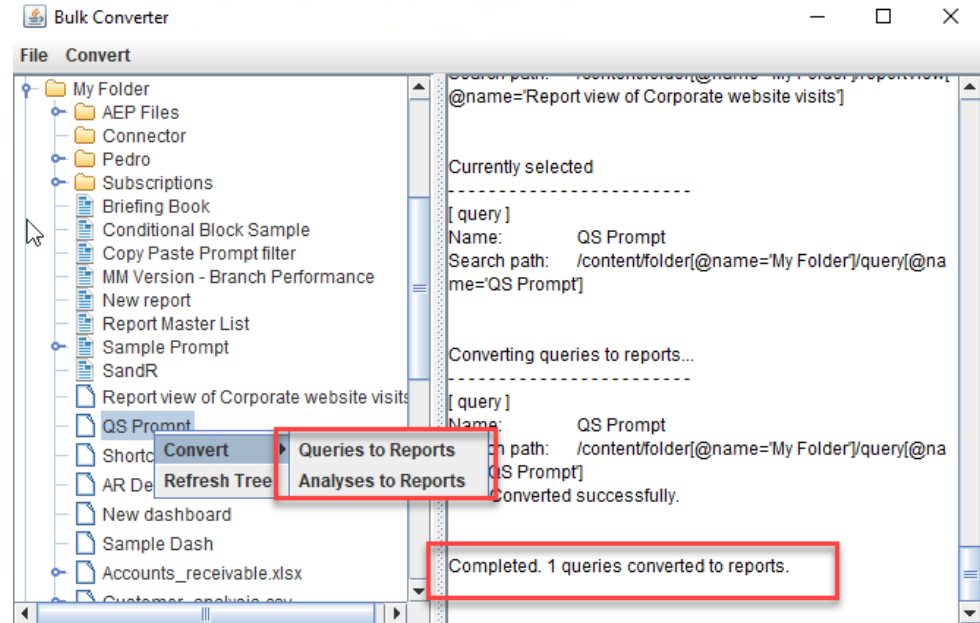
- Convert QS/AS reports
- Run from CMD line
- Enter Dispatcher URI
- Provide login
  - Seems to have an issue with MFA





# Time to convert

- Browse your content
- Select file(s) to convert
- Need to run QS conversions separate from AS conversions





# Before & after

- Original Query untouched
- New folder created “Converted Queries”

Team content / [My Folder](#)

<input type="checkbox"/>	Name	Type
<input type="checkbox"/>	Customer_analysis.csv CSV	Uploaded file
<input type="checkbox"/>	DataCollector01.csv CSV	Uploaded file
<input type="checkbox"/>	D52	Data set
<input type="checkbox"/>	employee.xls xls	Uploaded file
<input type="checkbox"/>	GO Sales (query) data set	Data set
<input type="checkbox"/>	MM Version - Branch Performance	Report
<input type="checkbox"/>	New dashboard	Dashboard
<input type="checkbox"/>	New data set	Data set
<input type="checkbox"/>	New report	Report
<input type="checkbox"/>	prod.xls xls	Uploaded file
<input type="checkbox"/>	promotions.xls xls	Uploaded file
<input type="checkbox"/>	QS Prompt	Query
<input type="checkbox"/>	QS Prompt (1)	Query
<input type="checkbox"/>	region.xls xls	Uploaded file

Team content / [My Folder](#) / [Converted Queries](#)

<input type="checkbox"/>	Name	Type
<input type="checkbox"/>	QS Prompt	Report



# Audit Extension

---

# Included in samples

- No longer need to download separately
- No longer need to create .war file
- Documentation included as well

32

## Cognos Audit Extension

My content

**Team content**

Samples

My portal pages

Team content / Cognos Audit Extension

☐ Name

☐ Account Audit

☐ Content Audit

☐ Role Audit

☐ [Schedule](#)

☐ Audit Run Report

> This PC > Windows (C:) > Program Files > ibm > cognos > analytics > samples > AuditExtension >

☐ Name

Date modified

Type

Size

 docs

1/3/2023 4:03 PM

File folder

 reporting

1/3/2023 4:03 PM

File folder

 war

1/3/2023 4:03 PM

File folder



# Audit vs. Audit Extension

---

## AUDIT

- Focused on user/report activity
  - Reports run
  - Log on/off
  - Batch reporting
  - Report/server errors

## AUDIT EXT

Focused on:

- Account audit
- Content audit
- Role/capability audit

IBM Cognos c11AuditExtension - IBM Developer

# Get help expanding self-service user adoption and reducing admin & costs

- Optimize data models and governance to support self-service
- Improve performance
- Efficiently clean up Cognos content with our proprietary report utility
- Run Cognos in concert with another BI platform
- Right-size Cognos licensing
- Upgrade to Cognos 11
- Training

<https://senturus.com/technologies/ibm-cognos-consulting/modernizing-cognos/>

# Get help with your upgrade



Mentoring



Quick start



Full implementation

[Learn more](#)



# Additional resources

## Unbiased product reviews



## Technical tips



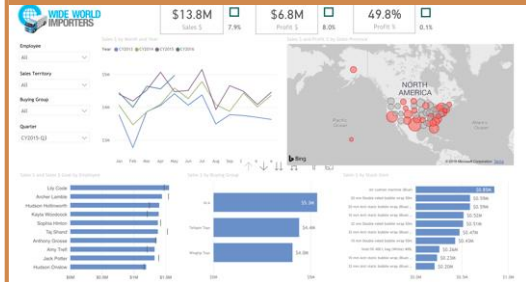
## Insider viewpoints



## More on this subject



## Product demos



## Upcoming events



# Upcoming events

## **7 Ways to Cut Cloud Costs NOW**

Thursday, Feb 23, 11am PT/2pm ET

Register: <https://envisor.io/events/7-ways-to-cut-cloud-costs-now>

## **Chat with Pat: Building Visuals in Power BI (live Q&A session)**

Wednesday, Feb 22, 11am PT/2pm ET

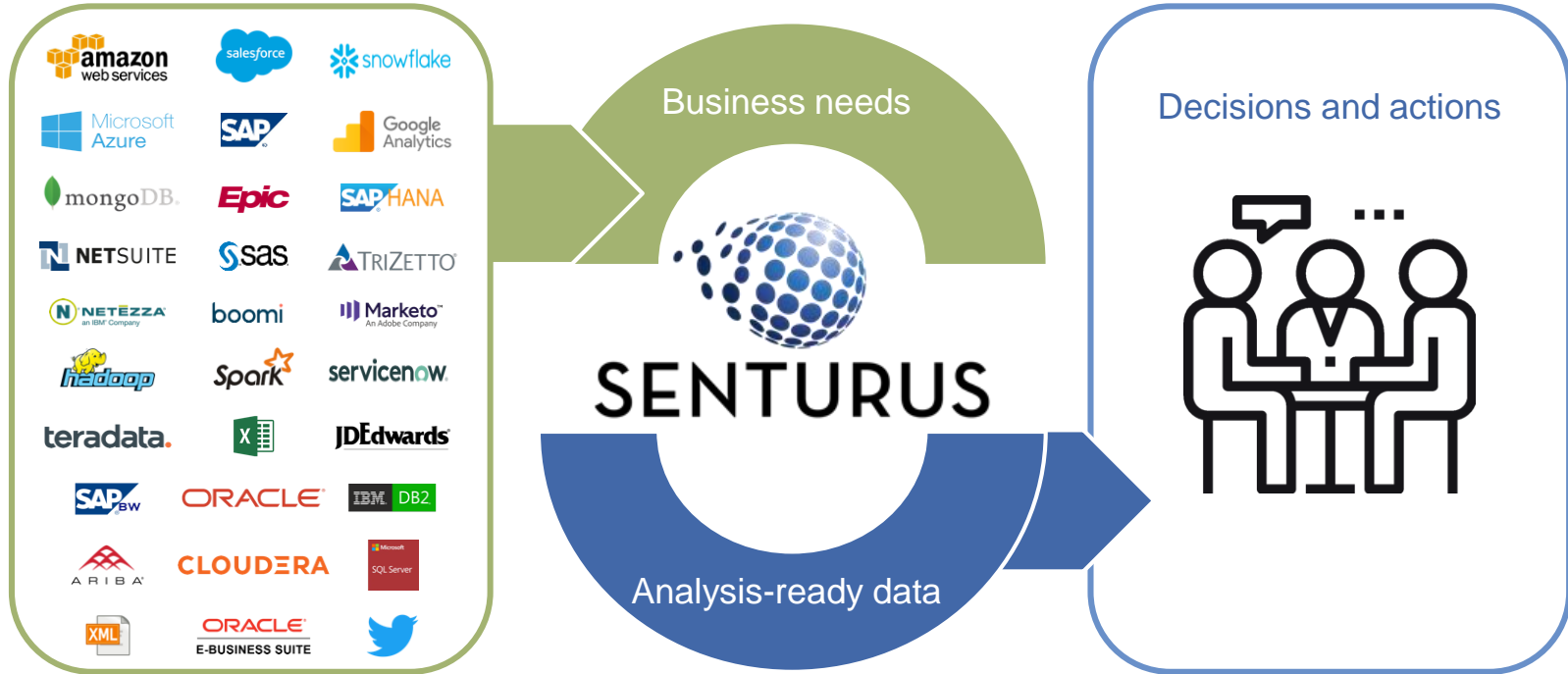
Register: <https://senturus.com/events/chat-with-pat-building-visuals-in-power-bi/>

## **Chat with Pat: Building Reports in Cognos (live Q&A session)**

Wednesday, Feb 22, 11am PT/2pm ET

Register: <https://senturus.com/events/chat-with-pat-building-reports-in-cognos/>

# Modern BI: accelerated & accessible



# A long, strong history of success

22+ years

1350+ clients

3000+ projects





# Join the Senturus team

We're hiring talented and experienced professionals

- Senior Data Warehouse/Cognos BI Consultant
- Senior Microsoft BI Consultant

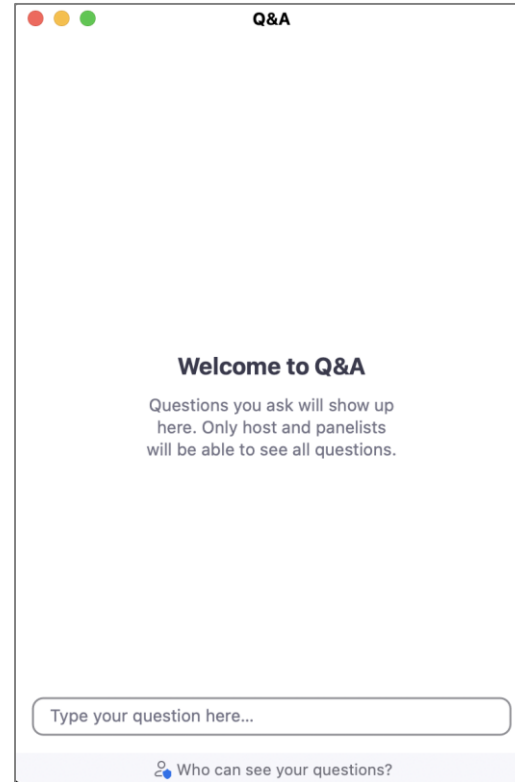
See job descriptions: <https://senturus.com/why-senturus/careers/>  
Send your resume to: [jobs@senturus.com](mailto:jobs@senturus.com)

# Q & A

If your question or issue is broader than what we are able to answer today, contact us at:

[info@senturus.com](mailto:info@senturus.com)

and we will set up a free consultation.



The image shows a screenshot of a web application window titled "Q&A". The window has a standard macOS-style title bar with red, yellow, and green window control buttons. The main content area is white and contains the following text:

**Welcome to Q&A**

Questions you ask will show up here. Only host and panelists will be able to see all questions.

At the bottom of the main content area is a text input field with the placeholder text "Type your question here...". Below the input field is a light purple footer bar containing a small icon of two people and the text "Who can see your questions?".

# Thank You



## SENTURUS

---

[www.senturus.com](http://www.senturus.com)

888-601-6010

[info@senturus.com](mailto:info@senturus.com)

© 2023 by Senturus, Inc. This presentation may not be reused or distributed without the written consent of Senturus, Inc.