



**SENTURUS**

# How to Prepare for a BI Migration

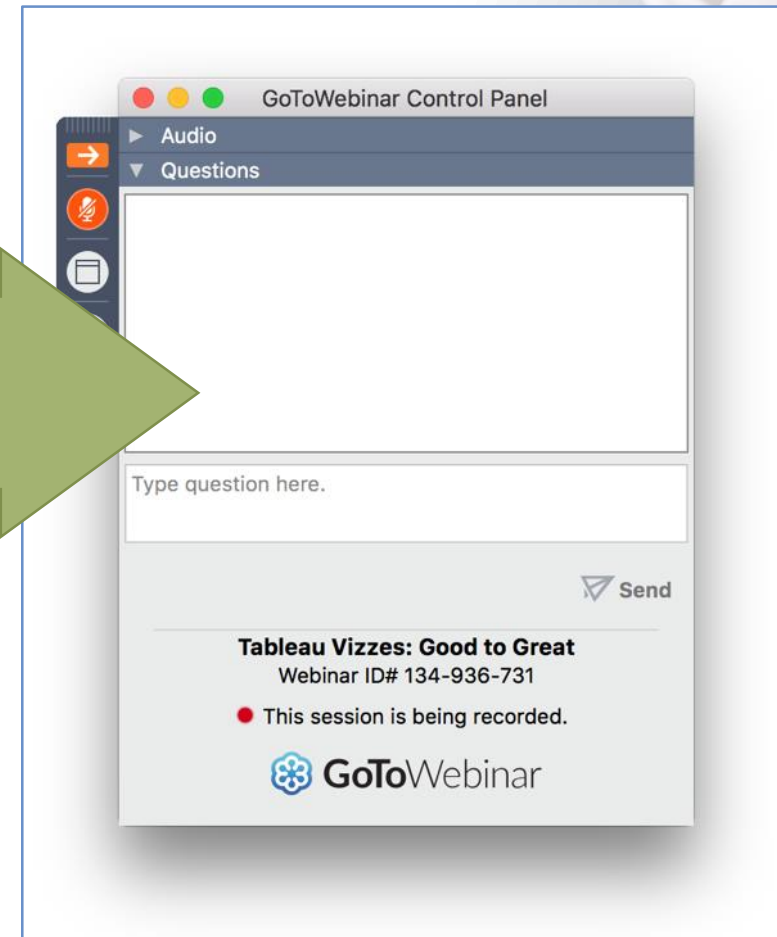


# GoToWebinar control panel

Click arrow to restore full control panel



Submit questions in this section




# To obtain this presentation

Visit the Knowledge Center on the Senturus website to download this presentation and explore other assets:


[senturus.com/resources](https://senturus.com/resources)

### Topics


- Analytics Connector
- Cross Vendor Comparisons
- Dashboards Reporting & Visualizations
- Data & Cloud Architecture
- Data Prep & Modeling
- Deployments & Performance Optimization
- IBM Analytics & Cognos
- Microsoft Azure & Power BI
- Security, governance & administration
- Snowflake
- Tableau




**Webinar**  
**6 Ways to Publish & Share Tableau Dashboards**  
How-to demo and discussion of pros, cons and considerations




**Webinar**  
**How to Successfully Implement Self-Service Analytics**  
Agile, governed self-service BI with a focus on Cognos analytics




**Webinar**  
**Creating a Power BI Report Your Boss Can Navigate**  
How to design a user-friendly nav experience



**Webinar**  
**Power BI Report Builder & Paginated Reports**  
Creating pixel-perfect reports for printing and PDF



**Webinar**  
**Using Python with Power BI**  
Learn the basics, including the software and plotting libraries



**Webinar**  
**Streamline Cognos Migrations and Consolidations**  
Automatically decode Cognos content and reduce migration time by 90%

# Agenda

- Introductions
- The migration challenge
- How to scope a BI migration
  - Types of migrations
  - Assess
  - Roadmap
  - Optimize
- Senturus overview and additional resources
- Q&A





# Introductions



**Michael Weinbauer**

Director

Senturus, Inc.

# Poll

What are you planning to migrate?

- Data source
- Data store
- Analytics platform
- Other
- No migration planned

<input checked="" type="checkbox"/>	—
<input type="checkbox"/>	—
<input type="checkbox"/>	—

# The migration challenge



# Good news: complexity is hidden

Cryptic source systems

Massive data warehouses (tables, etc.)

Complex transformations and logic

Elaborate data models

Complex reports and dashboards





# Bad news: it's still there...and worse!

Complex content

Business merge and realign

Platform and data source migration

# Lift and shift (almost) never works





# Unraveling content

- Reverse-engineer **reports, models, data sources, ETL, etc.**
- **Some content may be difficult to access**
- **No consolidated view** of what content is still needed and used
- **Audit data may be limited**



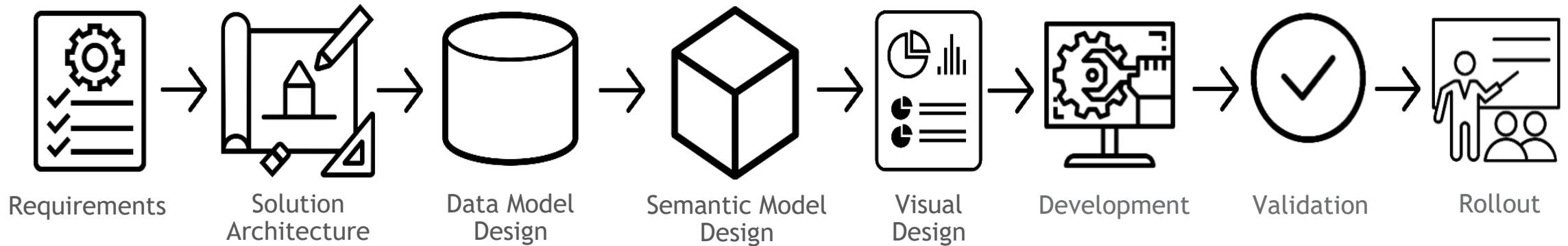
# Where to even start?



- How do I scope this?
- Is the cost worth the benefit?
- What resources will I need?
- What components get refactored, moved or archived?
- How long will it take?
- What are the risks?
- What are my business goals?



# What's in scope?



# A methodology is critical



Assess



Roadmap



Optimize



Execute



Secure &  
Manage

# Certain aspects benefit from automation

- Increase speed – reduce time required
- Reduce risk
- Avoid manual, time-consuming, and error-prone tasks
- Make scoping decisions based on comprehensive, accurate data

# Common Migration Scenarios



# Data source changes



# Data store changes



# Analytics platform changes



# Making it real



Assess



Roadmap



Optimize



# Stage 1 - Assess





# Stage 1 - Assess



- Content
- Users
- Environment
- Capability map
- Cost – ROM
- Project duration - approximate



Access

# Content

- What do I have?
- What do I use?
- What isn't used?
- What is redundant?





Access

# Users

- Who uses the system?
- How much and what do they use?
- Who doesn't?







Access

# Environment



- On-prem/cloud/hybrid
- Capacity/sizing
- HA/DR



Access

# Capability map



Current vs. target system

Data sources/stores

Modeling

Content

- Dashboard vs. pixel-perfect
- IT vs. self-service

Distribution/consumption



Access

# Cost



- Rough order of magnitude
- Go/no-go
- Budgetary





Access

# Project duration

Approximate timing





# Stage 2 - Roadmap





## Stage 2 - Roadmap



- Prioritization
- Resourcing
- Phasing/timing
- Cost - specific



Roadmap

# Prioritization

- Most used
- Business critical





Roadmap

# Resourcing

- Technical
- Business
- Environment







Roadmap

# Resourcing

- Highly specialized
- Temporary





Roadmap

# Phasing/timing

- "Whole hog" or phased
- Project duration - specific





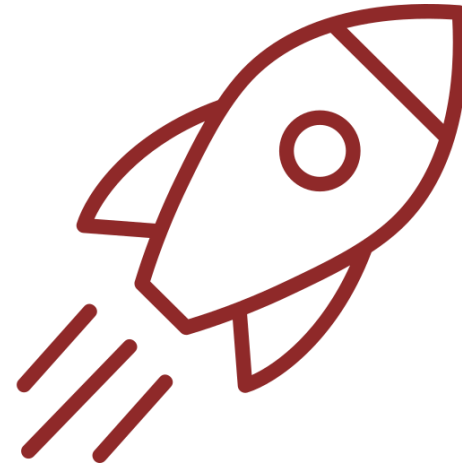
Roadmap

# Costs

Specific by resource and phase



## Stage 3 - Optimize







# Stage 3 - Optimize

- Eliminate
- Combine
- Streamline





# Eliminate

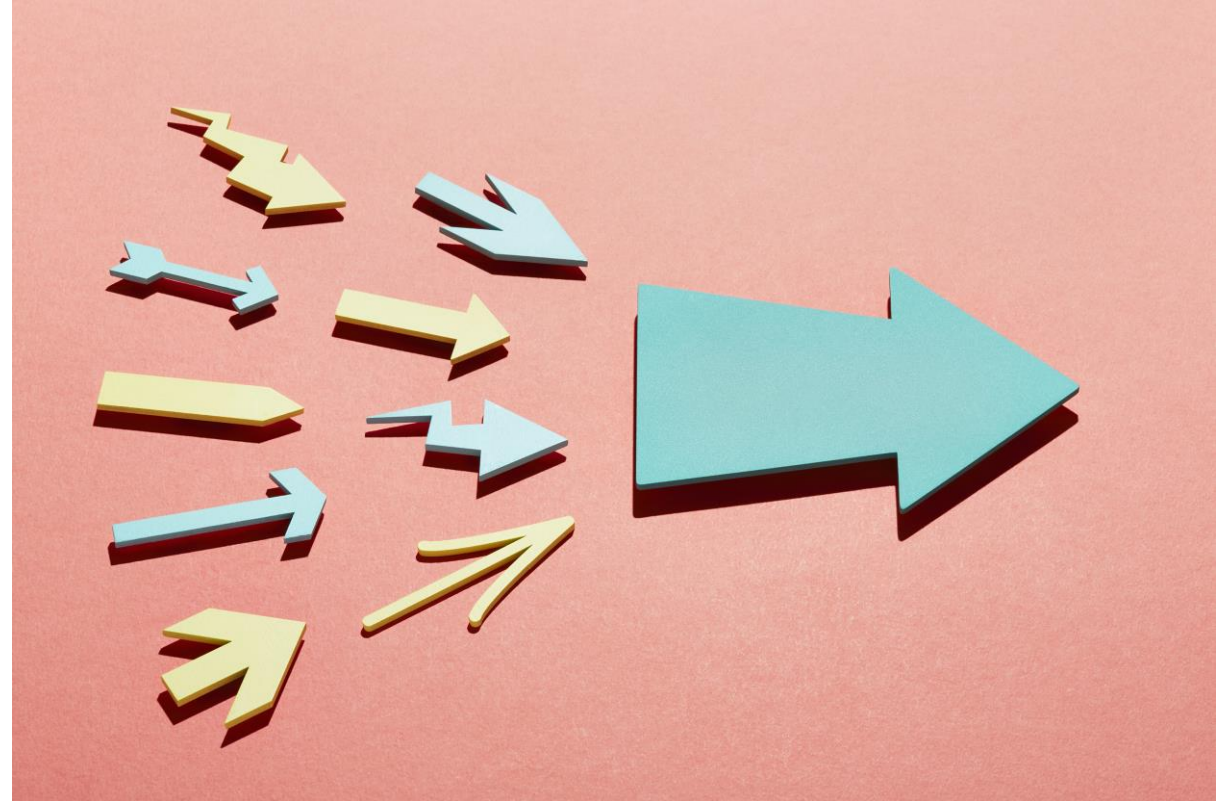


- Unused
- Underutilized
- Redundant



# Combine

Redundant/static to dynamic





# Streamline



Design metadata and content for self-service



# Automation can really help!



# People, process, technology



# Dress for success!



# Questions?



Scott Felten 15-minute  
Webinar follow-up meeting

<https://calendly.com/sfelten/15-minute-meeting-webinar-followup>



# Additional resources

## Unbiased product reviews



## Technical tips



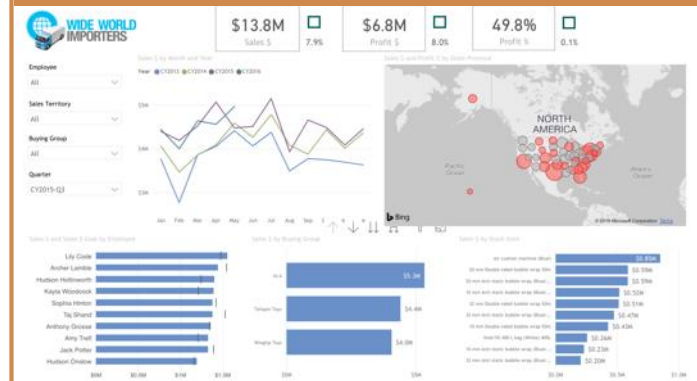
## Insider viewpoints



## More on this subject



## Product demos



## Upcoming events



# Migration case studies

Accelerating a Cognos Data Storage Migration

Report Migration & Consolidation Streamlines Costs

Reducing Unnecessary Cognos Complexity For Better Reporting

# Upcoming events

## **Tips for Installing Cognos Analytics 11.2.1**

Thursday, Mar 10, 2022, 11am PT/2pm ET

Register: <https://senturus.com/events/tips-for-installing-cognos-analytics-11-2-1/>

## **Why Bother with Data Architecture**

Thursday, Mar 30, 2022, 11am PT/2pm ET

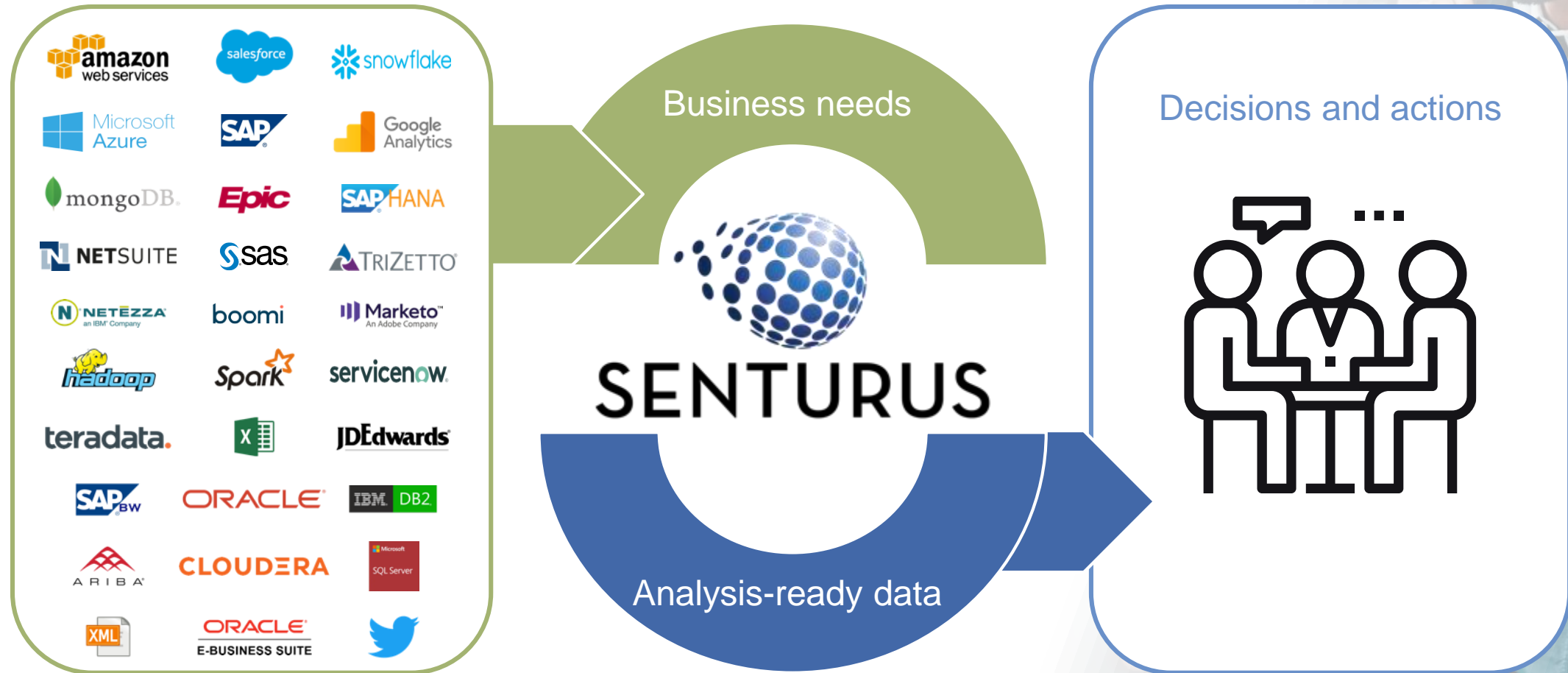
YouTube livestream

# Your path to modern BI

Accelerating self-service analytics for  
the enterprise



# Bridging the gap



# Full spectrum of BI services

- Data preparation and modern data warehousing
- Dashboards, reporting and visualizations in Power BI, Cognos and Tableau
- Hybrid BI environments (migrations, security, etc.)
- Software to accelerate bimodal BI and migrations
- BI services and support retainer (expertise on demand)
- Training and mentoring

# Complete BI training



Tailored group sessions



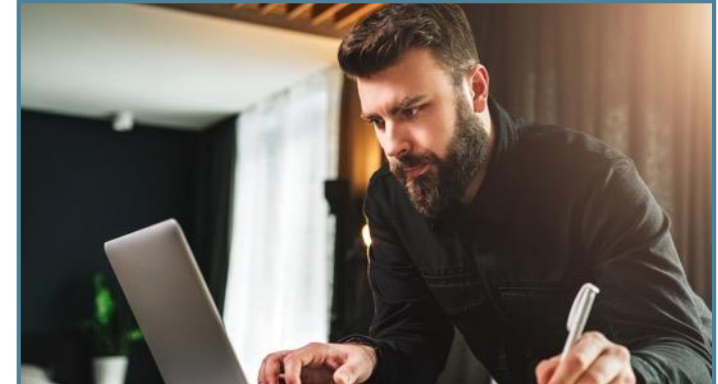
Mentoring



Instructor-led online courses



Self-paced learning



# A long, strong history of success

21+ years

1350+ clients

3000+ projects







# Join the Senturus team

We're hiring talented and experienced professionals

- Senior Microsoft BI Architect
- Senior Azure Architect
- Modern Analytics Solution Architect
- Java Software Engineer

See job descriptions: <https://Senturus.com/why-Senturus/careers>

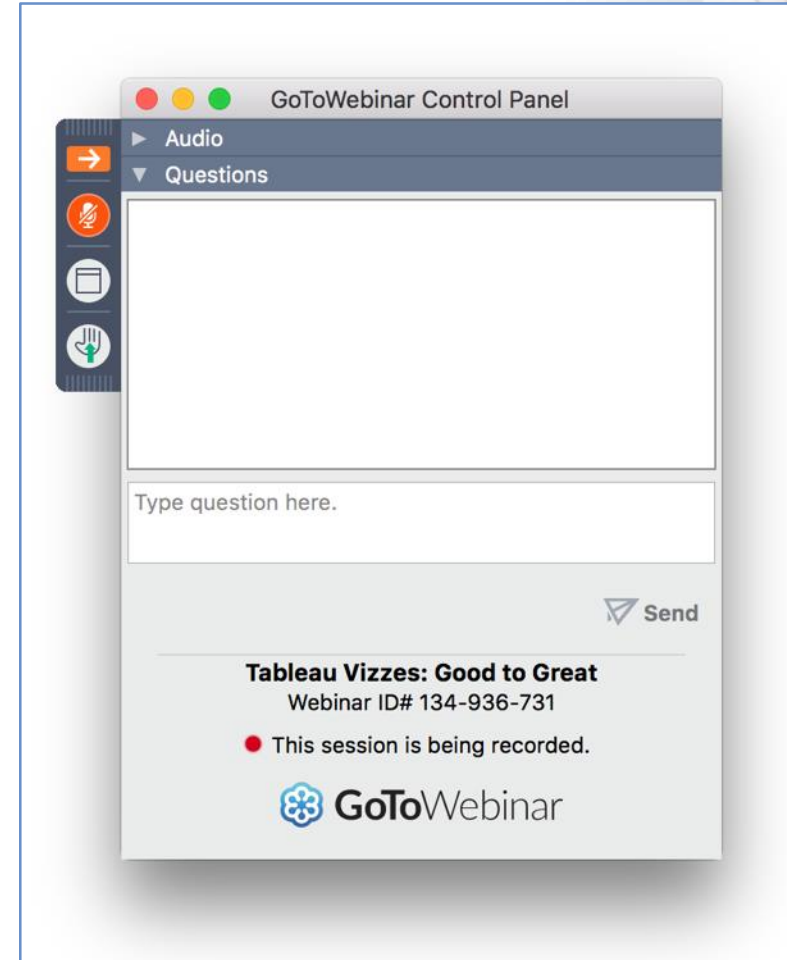
Send your resume to: [jobs@Senturus.com](mailto:jobs@Senturus.com)

# Q & A

If your question or issue is broader than what we are able to answer today, contact us at:

[info@senturus.com](mailto:info@senturus.com)

and we will set up a free consultation.



# Thank You



## SENTURUS

---

[www.senturus.com](http://www.senturus.com)

888-601-6010

[info@senturus.com](mailto:info@senturus.com)

© 2022 by Senturus, Inc. This presentation may not be reused or distributed without the written consent of Senturus, Inc.