



**SENTURUS**

# Evaluating Power BI's New Deployment Pipeline

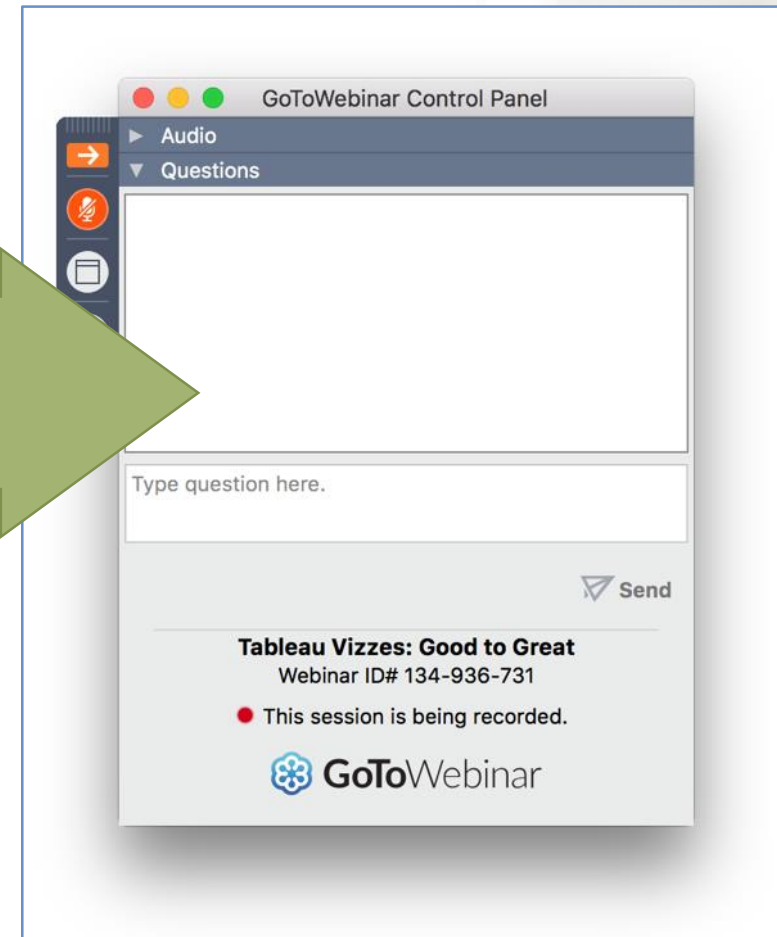


# GoToWebinar control panel

Click arrow to restore full control panel



Submit questions in this section



# To obtain this presentation

Visit the Resource Library  
on the Senturus website  
to download this presentation  
and explore other assets:

[senturus.com/resources](https://senturus.com/resources)

## RESOURCE LIBRARY

Welcome to our extensive, free library of past webinars, demos, whitepapers, presentations and helpful hints. Use the topic boxes to the right to filter through and easily locate content. We are constantly adding new materials, so please check back often to see our latest content. Enjoy!

SEARCH RESOURCES

GO

SORT BY

Popularity

Date

Title

Type



RESOURCE TITLE

TYPE

GO

SHEDDING LIGHT ON CLOUD BI OPTIONS  
Amazon. IBM Cognos Cloud. Microsoft Power BI Service. Tableau Online.  
Azure.



BUSINESS  
STRATEGY



IBM COGNOS REPORTING TOOLS: FEATURE SET COMPARISON  
Visual Reference Guide



FEATURES



A COMPARISON OF POWER BI, TABLEAU & COGNOS  
Differentiators Demo'd



FEATURES



# Agenda

Introductions

Introduction to deployment pipelines

Demo

Discussion

- Requirements

- Limitations

- Recommended best practices

Senturus overview

Additional resources



# Introductions



**Stephen Wullschleger**

Vice President  
Senturus, Inc.



**Michael Weinbauer**

Director  
Senturus, Inc.

# How do you manage your deployment process now?

# What is deployment pipelines?

- “An efficient and reusable tool that enables BI creators in an enterprise with Premium capacity, to manage the lifecycle of organizational content.
- Allows developing and testing Power BI content such as reports, dashboards, and datasets, before they're consumed by end users.”\*

\*Microsoft

# Workflow benefits

- Add the ability to manage content lifecycle (finally)
- Help build an efficient and reusable process for development, testing, and production
- Allow for improved productivity, faster delivery, and reduced user errors

# Demo



# Discussion



# Requirements

- All in Premium (A, EM, P)
- Workspace member to view content
- Permission to create workspaces (if new) or workspaces created for you
- Workspaces have new workspace experience enabled

# Permissions

- Pipeline permissions and workspace permissions are granted and managed separately
- Users with pipeline access have the following permissions:
  - View the pipeline
  - Share the pipeline with others
  - Edit and delete the pipeline
- Pipeline access doesn't grant permissions to view or take actions on the workspace content

## • Suggestions

- Development workspace permissions = developers
- Test workspace permissions = limited
- Production workspace permissions = extremely limited
- Pipeline permissions = deployment permissions
- App permissions = viewers
- Build permissions set in app or at dataset

# Use cases

## Include

- Full deployment
- Selective deployment
- Backwards deployment

## However...

- Limitations
- Utilizes premium resources whereas a shared workspace doesn't have to
- No method to revert to previous version

# Limitations

- Premium workspaces required for all environments
- Incremental refresh not supported
- Sensitivity labels not supported
- Workspace deployment limited to <300 items
- Template apps not supported
- Paginated reports
- Dataflows not supported (Mar 2021)
- Downloading dataset from target workspace not supported
- Limited data source rules
- App contents and settings are not copied
- Assign 1 workspace for 1 deployment pipeline ONLY
- No rollback/versioning
- Cannot assign all three to existing workspaces.
- No approvals and notes – does not support compliance standards

# Best practices

- Treat each workspace as a complete package of analytics
- Plan your permission model
- Connect different stages to different databases
- Use parameters in your model
- Development
  - Use Power BI Desktop to edit your reports and datasets
  - Version control for .pbix files
  - Separate modeling development from report and dashboard development
  - Manage your models using XMLA read/write capabilities
- Test
  - Simulate your production environment
  - Use dataset rules with a real-life data source
  - Measure performance
  - Check related items
  - Test your app
- Production
  - Manage who can deploy to production
  - Set rules to ensure production stage availability
  - Update the production app
  - Quick fixes to content

# Next release

Scheduled March 2021

# Other approaches

- GitHub
- SharePoint/OneDrive
- Share in the chat

# Component of overall Power BI administration

- Center of excellence
- Tenant and premium administration
- Premium capacity
- Performance and usage monitoring and optimization
- Governance
- Adoption

# More on this topic

- White paper: Preparing to deploy Power BI Premium  
<https://senturus.com/resources/preparing-to-deploy-power-bi-premium/>
- Matrix: Power BI report distribution options by license  
<https://senturus.com/blog/powerbi-licensing-report-distribution/>



# Poll

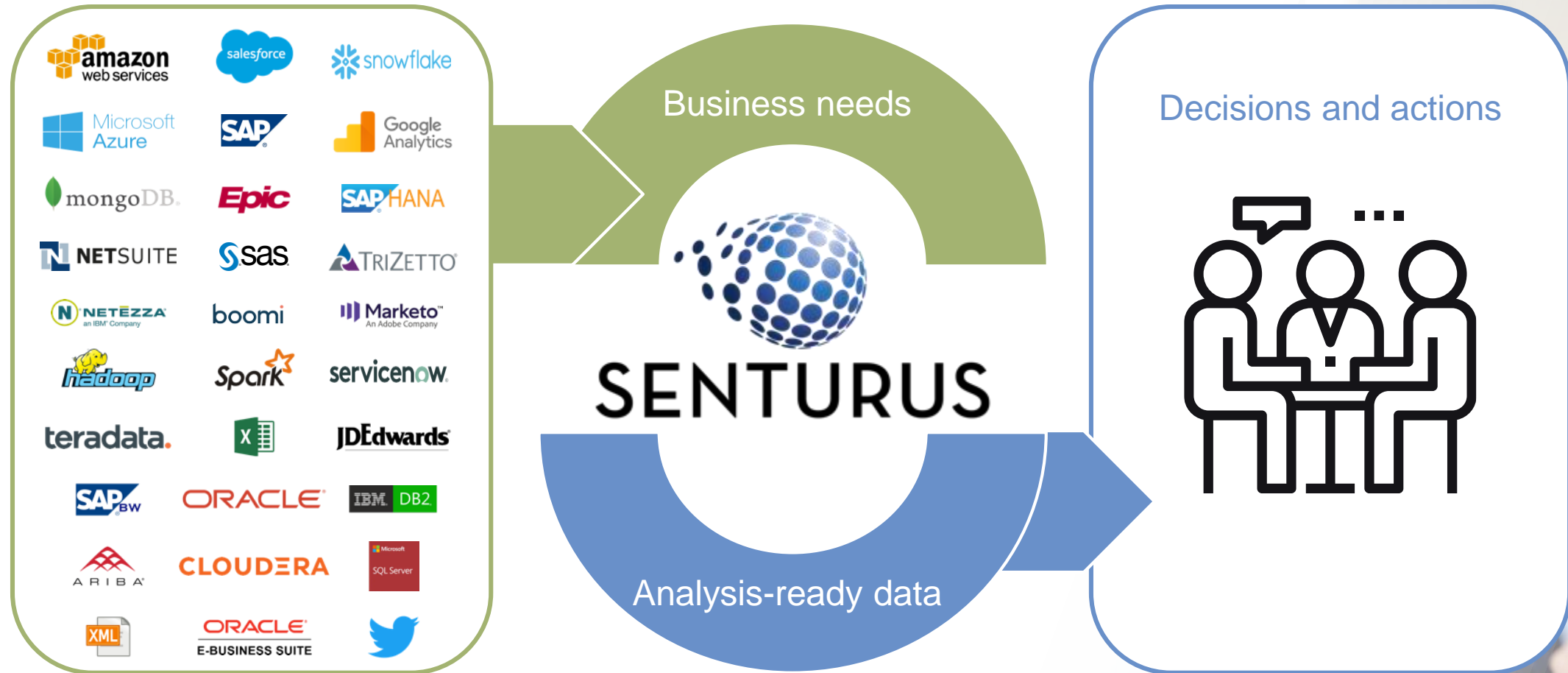
Given what you now know about Power BI Deployment Pipelines, how likely is your organization to use them?

- Will start using them very soon
- Interested, but will wait for more functionality
- Not interested at this time

# The authority in Business Intelligence

Exclusively focused on BI,  
Senturus is unrivaled in its  
expertise across the BI stack.

# Bridging the data and decisioning gap



# Full spectrum BI services

Dashboards, reporting and visualizations

Data preparation and modern data warehousing

Hybrid BI environments (migrations, security, etc.)

Software to enable bimodal BI and platform migrations

BI support retainer (expertise on demand)

Training and mentoring

# A long, strong history of success

19+ years

1300+ clients

2500+ projects



# Expand your knowledge

Find more resources  
on the Senturus website:

[senturus.com/senturus-resources](https://senturus.com/senturus-resources)



# Complete BI training



**Power BI**



Tailored group sessions



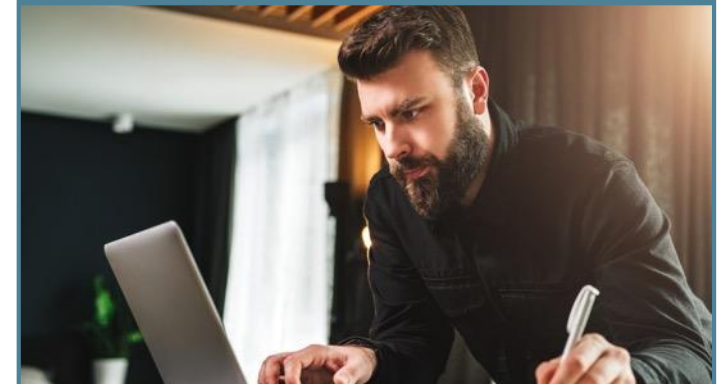
Mentoring



Instructor-led online courses



Self-paced learning



# Additional resources

## Unbiased product reviews



## Technical tips



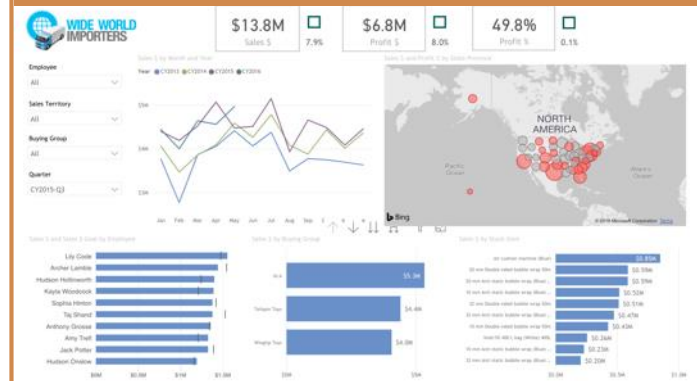
## Insider viewpoints



## More on this subject



## Product demos



## Upcoming events

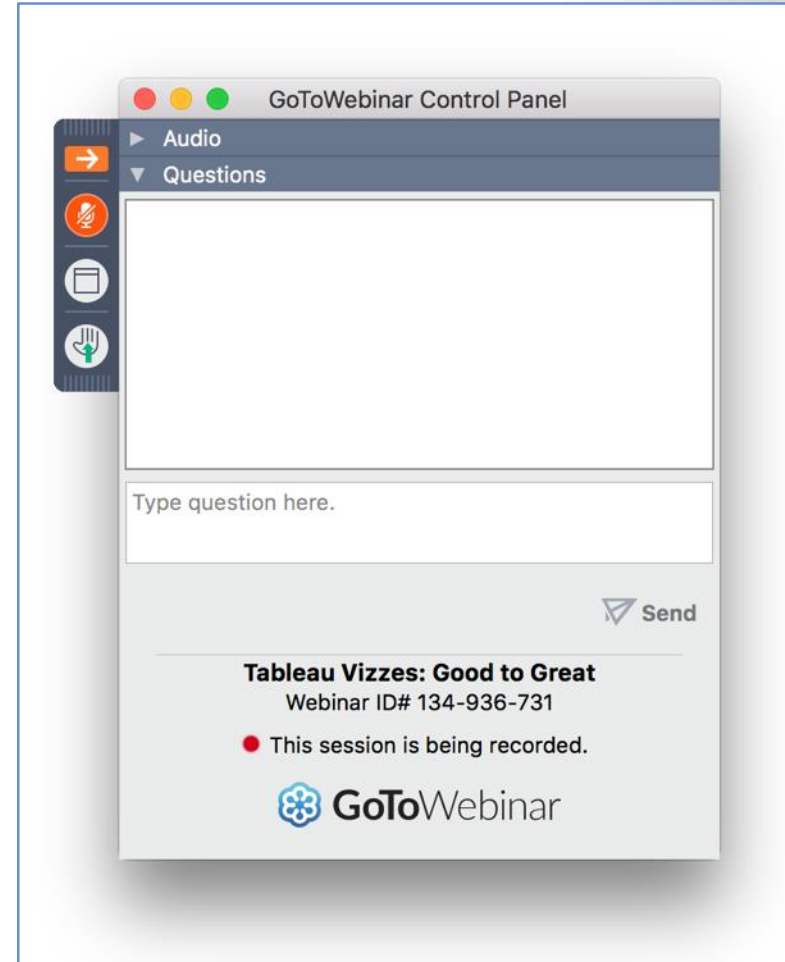


# Q & A

If your question or issue is broader than what we are able to answer today, contact us at:

[info@senturus.com](mailto:info@senturus.com)

and we will set up a free consultation.



# Thank You



## SENTURUS

---

[www.senturus.com](http://www.senturus.com)

888 601 6010

[info@senturus.com](mailto:info@senturus.com)

© 2020 by Senturus, Inc. This presentation may not be reused or distributed without the written consent of Senturus, Inc.