



SENTURUS

TIPS FOR INSTALLING COGNOS ANALYTICS 11.1.1

New Version, New Steps, New Installation Tool

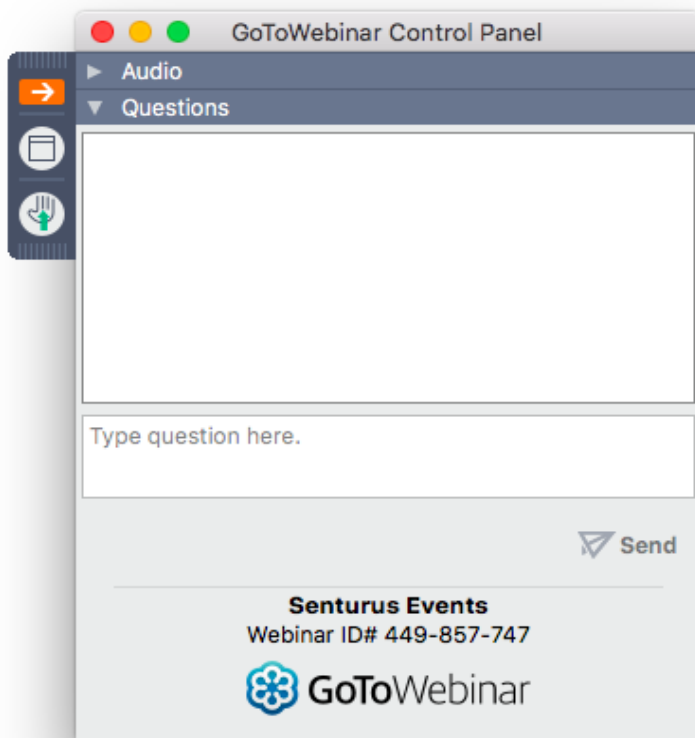


GoToWebinar Control Panel

Click arrow to restore full control panel



Submit questions here



Presentation Slide Deck

www.senturus.com/resources/



RESOURCE LIBRARY

Welcome to our extensive, free library of past webinars, demos, whitepapers, presentations and helpful hints. Use the topic boxes to the right to filter through and easily locate content. We are constantly adding new materials, so please check back often to see our latest content. Enjoy!

SEARCH RESOURCES

GO

SORT BY

Popularity

Date

Title

Type



RESOURCE TITLE	TYPE	GO
CATCH UP ON THE WEEKLY WIND DOWN Our Trainers Share Their Favorite Tips	TRAINING	→
GETTING STARTED: POWER BI ESSENTIALS Power BI Desktop and Service	FEATURES	→
TIPS FOR INSTALLING COGNOS ANALYTICS 11.1.1 New Version, New Steps, New Installation Tool	TIPS & TRICKS	→
COGNOS ANALYTICS 11.1 – OVERVIEW OF MAJOR NEW RELEASE New Features & Demos of Oct 2018 Release	TIPS & TRICKS	→

- ☐ BUDGETING FORECASTING & STRATEGIC PLANNING (2)
 - ☐ COGNOS (1)
 - ☐ COGNOS ANALYTICS (0)
- ☐ DASHBOARDS REPORTING AND VISUALIZATIONS (17)
 - ☐ DATA ARCHITECTURE (6)
 - ☐ DATA PREPARATION (8)
- ☐ PREDICTIVE ANALYTICS (12)
 - ☐ REPORTING AND VISUALIZATIONS (1)

Agenda

- Introductions
- Installer overview
- Hardware specs
- Web servers, database drivers and preservation files...
oh my
- About Senturus
- Additional information
- Q&A

Introducing...Today's Presenters



Todd Schuman
Practice Lead Installations,
Upgrades and Optimization
Senturus, Inc.



Michael Weinbauer
Practice Area Director
/ Solutions Architect
Senturus, Inc.

Poll #1

Which version of Cognos are you currently using?

- 11.1.X
- 11.0.X
- 10.X
- 8
- Don't know/currently don't use Cognos

Poll #2

When do you plan to upgrade to Cognos Analytics 11?

- 1-2 months
- 3-5 months
- 6+ months
- No plans to upgrade/don't know
- Already upgraded



SENTURUS

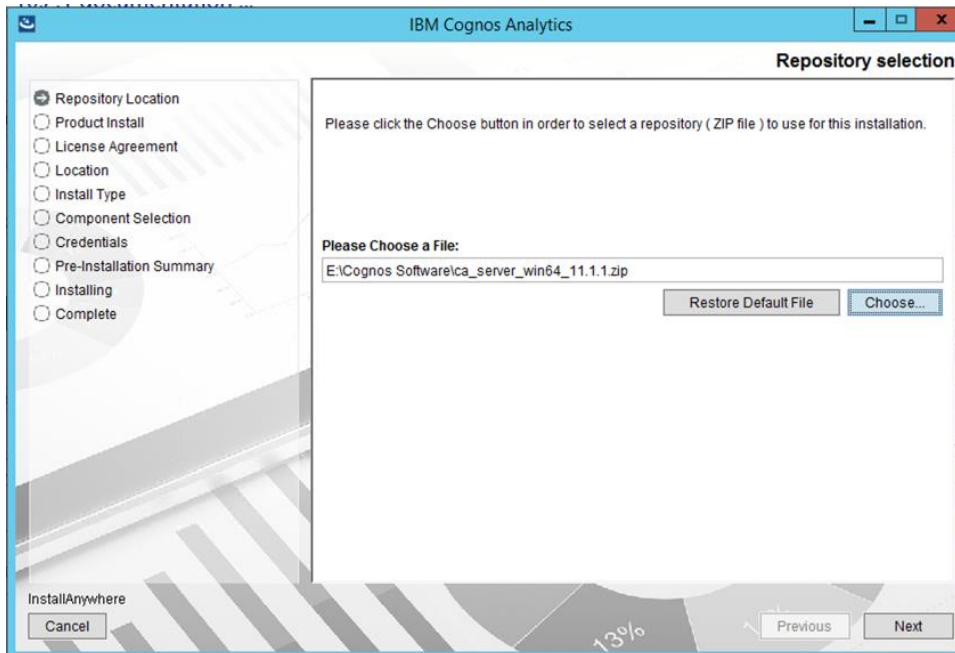
INSTALLER OVERVIEW

New Splash Screen



New Installer

 ca_client_MP_11.1.1	11/26/2018 12:33 ...	Compressed (zipp...	2,243,466 KB
 ca_installer_win_2.0	11/26/2018 12:17 ...	Application	131,185 KB
 ca_server_win64_11.1.1	11/26/2018 1:04 PM	Compressed (zipp...	4,313,823 KB



Client tools

- Framework Manager (FM)
- Cube Designer (CD)
- Dynamic Query Analyzer (DQA)
- Lifecycle Manager (LCM)

Server

- Cognos components
 - Dispatcher
 - Content manager
 - Gateway
- LCM

Install Options

Let's get started!

Choose what you want to install:

☒ IBM Cognos Analytics

The easy-to-use yet powerful application that integrates reporting, modeling, analysis, dashboards and events so you make effective business decisions.

☐ IBM Cognos Analytics tools

You will be prompted to select from one of IBM Cognos Analytics Tools. Such as LifeCycle Manager, Dynamic Cube Designer, Dynamic Query Analyzer or Framework Manager.

Installation type

☐ Easy install

Install and configure a complete Analytics solution on a single machine, or expand your capacity onto an additional machine.

☒ Custom

Install only what you want, so you can distribute capabilities to fit your needs:

- application tiers
- content tiers
- expand your capacity onto another machine

Choose components

Choose the components to install.

Install only what you want, so you can distribute capabilities to fit your needs

☒ Content tier

Contains your content manager services and connects to your content store database.

☒ Application tier

Contains your report services and batch report services.

☐ Gateway

Select this component if you want to use optional features such as SSO or WebDAV.

Client Tools

Let's get started!

Choose what you want to install:

- ☐ IBM Cognos Analytics

The easy-to-use yet powerful application that integrates reporting, modeling, analysis, dashboards and events so you make effective business decisions.

- ☒ IBM Cognos Analytics tools

You will be prompted to select from one of IBM Cognos Analytics Tools. Such as Lifecycle Manager, Dynamic Cube Designer, Dynamic Query Analyzer or Framework Manager.

IBM Cognos Analytics Tools

Choose the Analytic tool you want to install:

- ☐ IBM Cognos Framework Manager

The metadata modeling tool for IBM Cognos Analytics.

- ☒ IBM Cognos Lifecycle Manager

IBM Cognos Lifecycle Manager helps you to compare and validate report content during upgrade cycles to see if anything has changed.

- ☐ IBM Cognos Cube Designer

The modeling tool provided with IBM Cognos Dynamic Cubes. You use it to build dynamic cubes and publish them for use in the IBM Cognos studios.

- ☐ IBM Cognos Dynamic Query Analyzer

A tool that provides graphical representations for the query logs produced by dynamic query mode queries.



SENTURUS

HARDWARE SPECS

Updated Hardware Specifications

Cognos 11.0	Cognos 11.1
4 GB for the base operating system and accompanying software, such as antivirus, back up and enterprise management software	4 GB for the base operating system and accompanying software, such as antivirus, backup and enterprise management software
4 GB for a 64-bit IBM Content Manager JVM	8 GB for the dispatcher JVM (Content Manager or application tier)
4 GB for a 64-bit application tier JVM	
1 GB for the Cognos Graphic Service JVM	2 GB for Cognos Graphic Service JVM
4 GB for the query service (dynamic query mode) JVM	8 GB for query service/dataset service JVM
1.5 GB for each batch/interactive report service	2 GB per core for report server processes (BIBus)
	8 GB for the Flint JVM
16 GB RAM	32 GB RAM

WebSphere Liberty Memory

IBM Cognos-11R10 - Configuration - Resource Properties			
	Name		Value
	Type		WebSphere Liberty Profile
*	Ping timeout in seconds		240
*	Stop wait time in seconds		60
*	Maximum memory for Websphere Libe...		8192
	Advanced properties		coreThreads



New Services

IBM Cognos services - Component Properties	
Name	Value
Agent service enabled?	True
Annotation service enabled?	True
Batch report service enabled?	True
Content Manager service enabled?	True
Delivery service enabled?	True
Dispatcher service enabled?	True
Event management service enabled?	True
Graphics service enabled?	True
Human task service enabled?	True
Interactive discovery visualization ser...	True
Job service enabled?	True
Metadata service enabled?	True
Mobile service enabled?	True



SENTURUS

**WEB SERVERS, DATABASE
DRIVERS AND PRESERVATION
FILES...OH MY**

IIS Steps

- ARR 3.0
 - Application request routing
 - URL rewrite
- New scripts for 11.1 and 11.0.13
 - <http://www-01.ibm.com/support/docview.wss?uid=swg22000097>

Script last tested against Cognos Analytics 11.0.13 and 11.1.1



[CA_IIS_Config_v1.13\(up to 11.0.13\).zip](#)

[CA_IIS_Config_\(11.1.1\)only.zip](#)

Database Drivers

- JDBC drivers - must have for C11
 - [install Dir]\drivers
 - Dashboard/data modules - require JDBC
- Install DB software on servers that require database access
 - App tier/dispatchers
 - Content repository
- SQL native client
- Oracle client

JDBC - Oracle

Name	JRE version	Easy location to obtain from	Alternative source location
ojdbc14.jar	1.4	<i>Legacy (historic) - not supported by Oracle</i>	n/a
ojdbc5.jar	5	Oracle 11G rel2 client	Download from oracle.com
ojdbc6.jar	6	Oracle 11G rel2 or 12C client	Download from oracle.com
ojdbc7.jar	7	Oracle 12C client	Download from oracle.com

In addition, there are different **versions** of the same file **name**. For example:

Name	Source	Size	Version (date modified)	Details
ojdbc6.jar	Oracle 11G rel2 client	3,692,104 bytes	23/02/2010 21:09	Oracle 11.2.0.1.0 JDBC 4.0 compiled with JDK6
ojdbc6.jar	Oracle 12C client	2,111,338 bytes	29/08/2014 05:14	Oracle 12.1.0.2.0 JDBC 4.0 compiled with JDK6 on Thu_Aug_28_19:10:23_PDT_2014

It is therefore important to obtain/use **both** the correct file **name** (filename) and **version** (date/size).

JDBC - SQL Server

The following Microsoft JDBC Drivers are supported, until the indicated End of Support date.

Driver Name	Driver Package Version	Applicable JAR(s)	End of Mainstream Support
Microsoft JDBC Driver 6.2 for SQL Server	6.2	mssql-jdbc-6.2.0.jre8.jar mssql-jdbc-6.2.0.jre7.jar	June 30, 2022
Microsoft JDBC Driver 6.0 for SQL Server	6.0	sqljdbc42.jar sqljdbc41.jar	July 14, 2021
Microsoft JDBC Driver 4.2 for SQL Server	4.2	sqljdbc42.jar sqljdbc41.jar	August 24, 2020
Microsoft JDBC Driver 4.1 for SQL Server	4.1	sqljdbc41.jar	December 12, 2019

The following Microsoft JDBC Drivers are no longer supported.

Driver Name	Driver Package Version	End of Mainstream Support
Microsoft JDBC Driver 4.0 for SQL Server	4.0	March 6, 2017
Microsoft SQL Server JDBC Driver 3.0	3.0	April 23, 2015
Microsoft SQL Server JDBC Driver 2.0	2.0	December 31, 2012

Preserve Custom Folders

- New releases overwrite all folders
- Always backup before
- [Install Dir]\Analytics\Configuration\Preserve
 - Preserve.txt
- # Specify files or folders to preserve
 - [folder name]
 - [folder name]\image.jpg
- Preserve
 - Images/logos
 - JS files
 - WAR files
 - Certs

Installing Releases

- On top installation
- Backup/archive content store before
- Export Cognos configuration to external location
- Check supported software and prerequisites
 - <http://www-01.ibm.com/support/docview.wss?uid=swg27047186>
- Download and install new samples

Clean Install vs. Over the Top

1. In-Place Install = applying the newer version over top of the existing version
2. Separate Install = installing the newer version of the software in a separate location
3. Over-the-top Content Store = using existing content store (copy), upon upgrade, new version alters the existing tables
4. New Content Store = using an empty database, letting the new version create its own tables fresh

	In-Place Install Over-the-Top Content Store Upgrade	Separate Product Install + Over-the-Top Content Store Upgrade	Separate Product Install + New Content Store Database
supported	Yes for version 11+ No for version 10 to 11	Yes	Yes
simplicity	Simple	Complexity varies	Complexity varies
Content Store Deployment	Not needed	Not needed	Must import and export content from old to new
speed - installed components	Generally Quick	Varies depending on number of distributed components and complexity of configuration	Varies depending on number of distributed components and complexity of configuration
speed - upgrading of content	The "upgrade content" task can take some time if lots of content	The "upgrade content" task can take some time if lots of content	Export and Import can take some time depending how much content is included in each deployment as does running the content upgrade task
parallel testing	No	Yes, assuming copy of content store database was used	Yes
rollout	All users at once	Options for all users at once or one group at a time	Options for all users at once or one group at a time
cutover	Simple	Many steps to consider, like switching URLs and reconfiguring security	Many steps to consider, like switching URLs and reconfiguring security
rollback	Requires re-instating the backup	Simple - old environment still exists assuming copy of content store was used	Simple - old environment still exists
custom file retention	Remember to edit the preserve.txt file to not overwrite custom folders or directories (v11+)	Must remember to copy/edit files or images after installation	Must remember to copy/edit files or images after installation
my folders	Retained	Retained	Be sure to include in deployment from old to new environments
schedule states	State of schedules retained	Retained, caution on schedules being enabled in both environments at the same time	Be sure to include in deployment from old to new environments, caution on schedules being enabled in both environments at the same time
install path	Sometimes the install path changes for the newer version. It shouldn't cause any issues. Rather, some installation purists like to have the proper, clean install folder structure in place.	Clean, fresh install	Clean, fresh install
Sizing considerations	Leverages existing environment. Should consider sizing increases if anticipating greater self service behaviors or if new features were introduced in the next version	Must support dual environments and testing efforts. Should consider sizing increases if anticipating greater self service behaviors or if new features were introduced in the next version	Must support dual environments and testing efforts. Should consider sizing increases if anticipating greater self service behaviors or if new features were introduced in the next version
human error potential	Less	More manual steps equal more potential for error	More manual steps equal more potential for error
ongoing development during upgrade project	None - all changes captured upon upgrade	Must have plan in place to deal with this. E.g Freeze new development; import changes often, etc	Must have plan in place to deal with this. E.g Freeze new development; import changes often, etc

<https://community.ibm.com/community/user/businessanalytics/blogs/katie-mccray/2019/02/18/matrix-clean-ca-install-or-over-the-top-upgrade>

Upgrade Assistance - Two Options

Our dedicated integration and upgrade staff provides expertise and guidance to smoothly migrate your system to a stable platform with minimal impact on end users

- Quick Start
 - Installation and configuration of development environment plus full documentation
- Full Upgrade Implementation
 - Full-service implementation across all appropriate environments

<http://www.senturus.com/ibm-cognos-upgrade-services/>

Contact us at: info@senturus.com or 888 601 6010 ext. 85

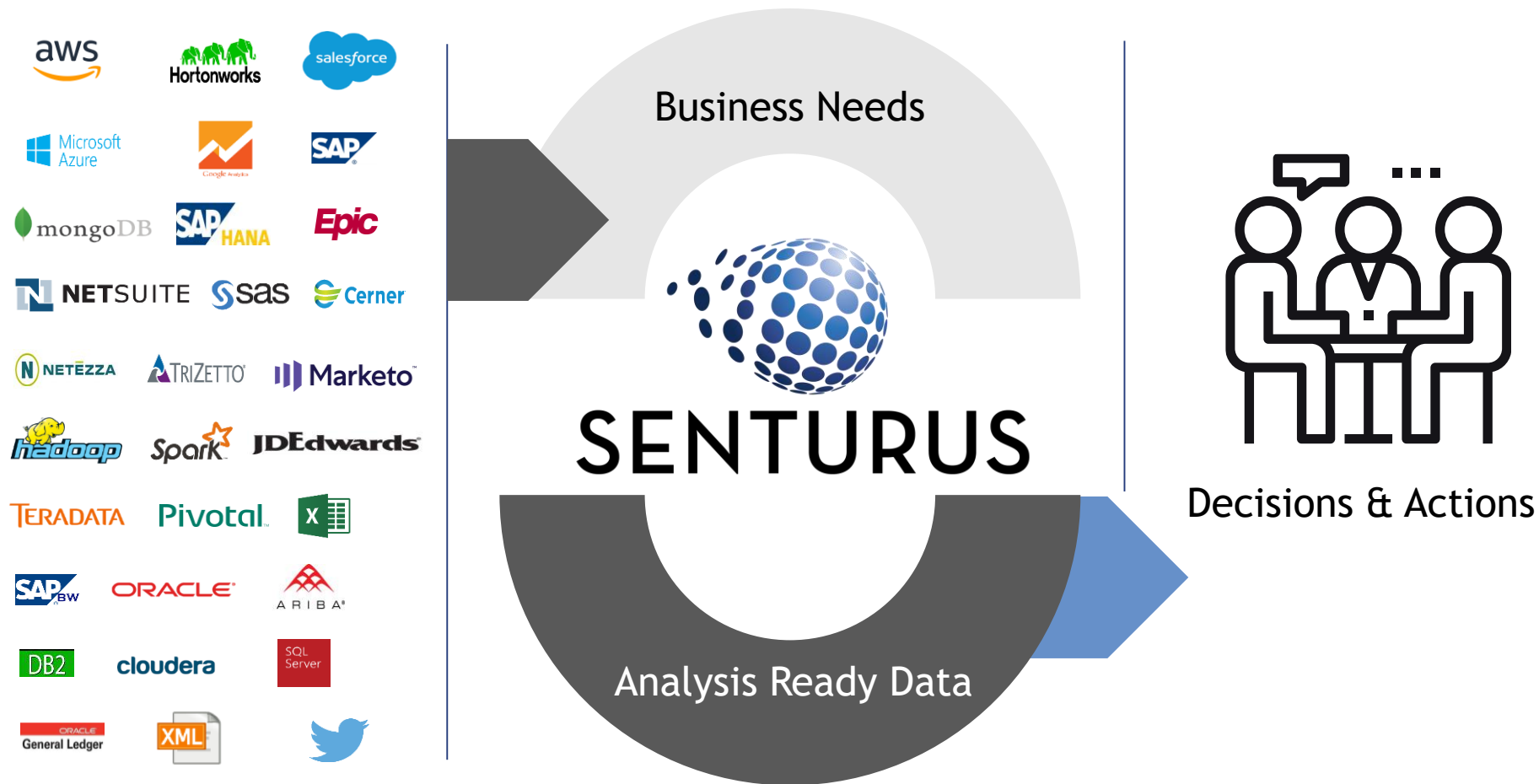


SENTURUS

WHO WE ARE

Business Analytics Consultants

Bridging the Gap between Data & Decision Making



Business Analytics Architects

- Dashboards, reporting & visualizations
- Data preparation & modern data warehousing
- Self-service business analytics
- Salesforce reporting
- Proprietary software to enable bimodal BI and platform migrations



1200+ Clients, 2000+ Projects, 18+ Years



AeroPrecision





SENTURUS

ADDITIONAL RESOURCES

Upcoming Events

www.senturus.com/events



TABLEAU DASHBOARDS THAT CAPTIVATE & COMMUNICATE

MOVING BEYOND BARS AND CHARTS

Thursday, May 30 - 11am PT (2pm ET) - 60 minutes



CALMING THE COGNOS FAREWELL FEARS

OPTIMIZE AND STREAMLINE YOUR MIGRATION FROM
COGNOS

Thursday, May 09 - 11am PT (2pm ET) - 60 minutes



USE VISUAL ANALYTICS TOOLS WITH TRUSTED COGNOS DATA

SENTURUS ANALYTICS CONNECTOR ENABLES BI-
MODAL BI

Thursday, June 6 - 11am PT (2pm ET) - 60 minutes

Free Resources

www.senturus.com/senturus-resources/



UPCOMING EVENTS



RESOURCE LIBRARY



BLOG

Training Options

<https://senturus.com/training/>



REGULARLY SCHEDULED COURSES

We hold more than a dozen live, hands-on, interactive courses in our virtual classroom each month. Course topics cover the breadth of the skillset for Cognos Analytics and Tableau.



LARGE GROUP AND PRIVATE INSTRUCTION

We offer many ways for your organization to access private Cognos, Tableau and Power BI training including onsite or online group courses and individual/small group mentoring.



SELF-PACED LEARNING

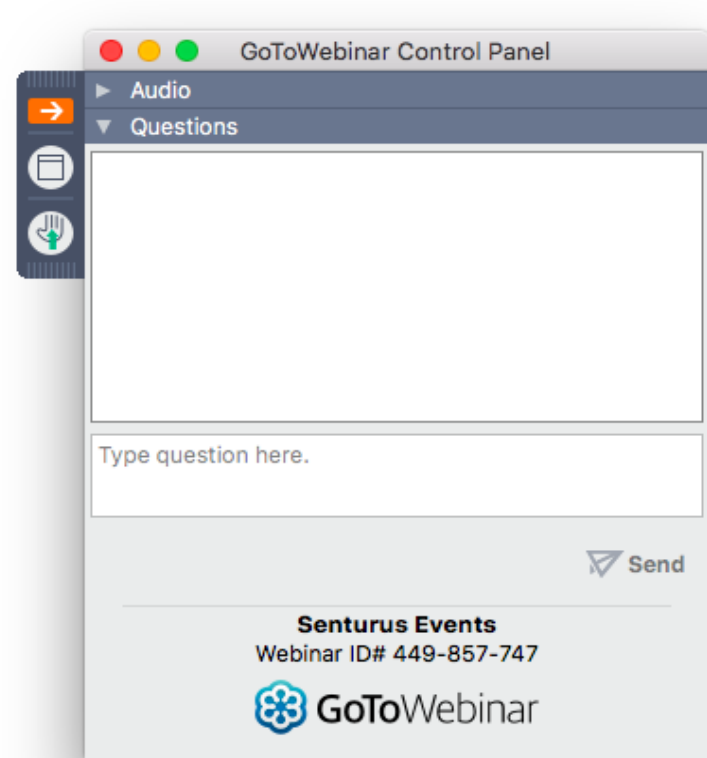
Highly cost effective approach to learning fundamental concepts and light technical skills with courses designed to address real-life applications.

Q&A

If your question or issue is broader than what can be answered today, contact us at

info@senturus.com

and we will set up a free consultation.



Thank You!

www.senturus.com
info@senturus.com
888 601 6010



Copyright 2019 by Senturus, Inc.
This entire presentation is copyrighted and may not be
reused or distributed without the written consent of
Senturus, Inc.

