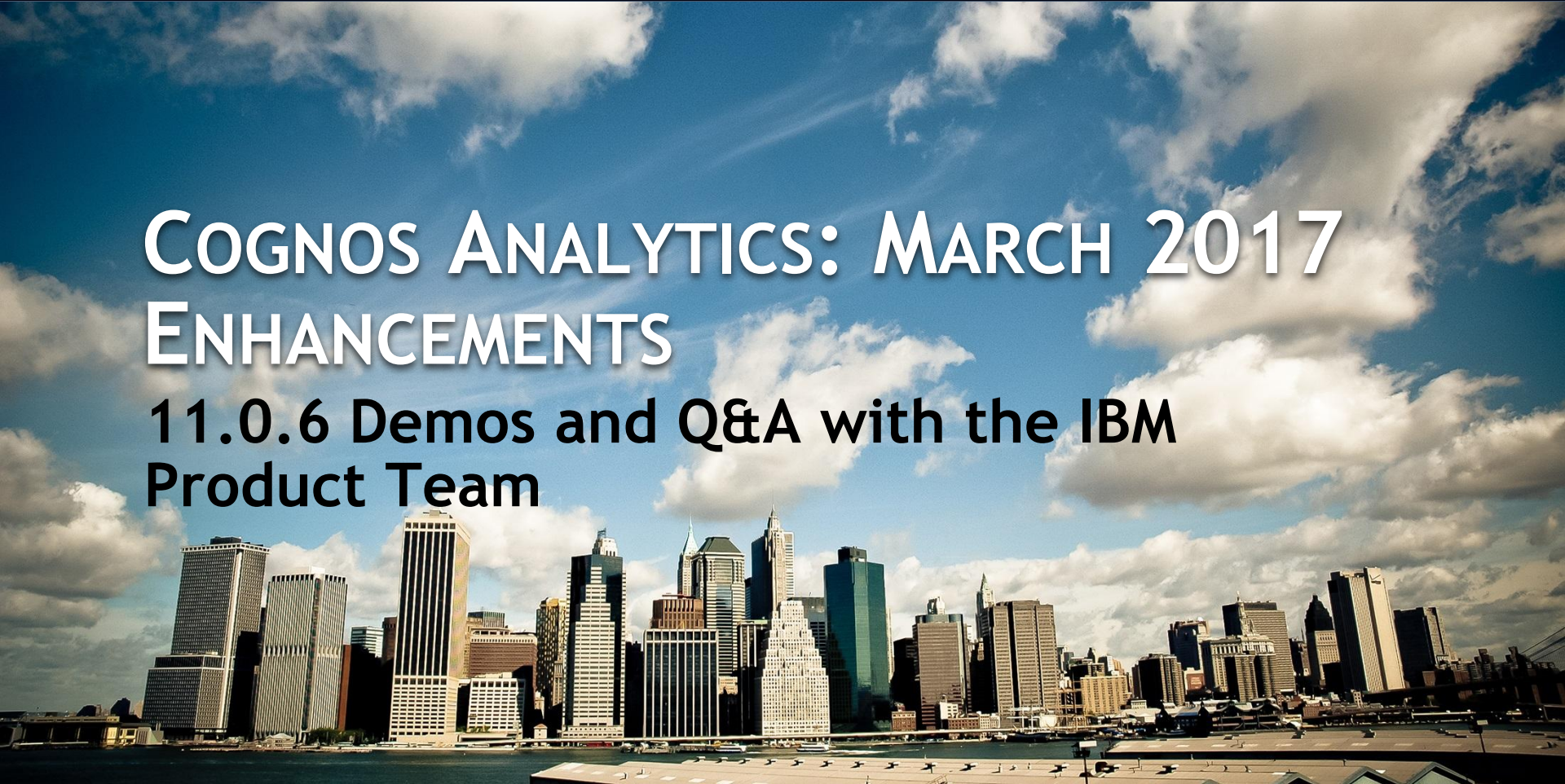




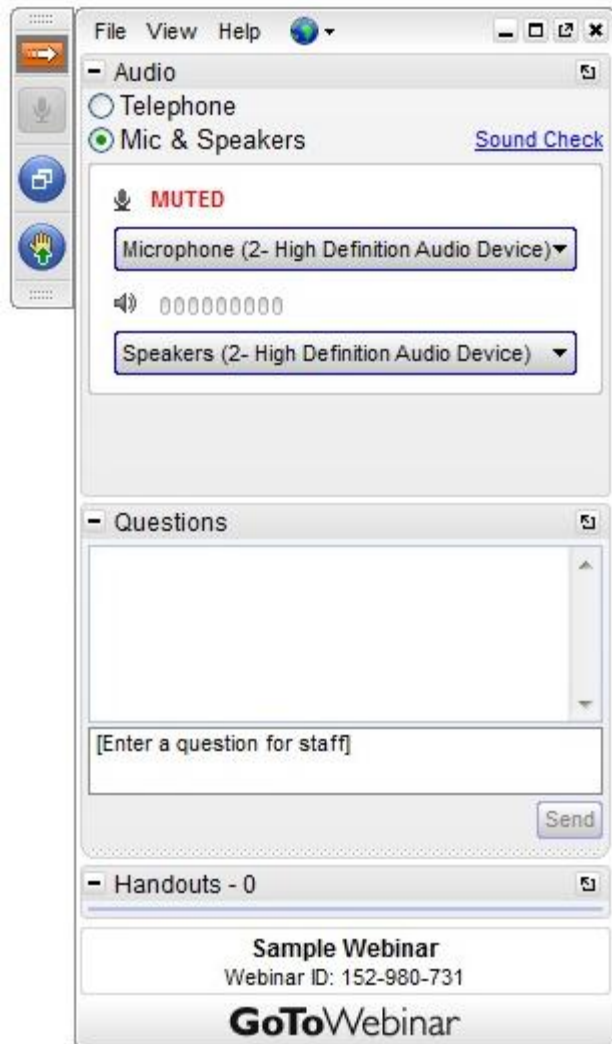
SENTURUS

COGNOS ANALYTICS: MARCH 2017 ENHANCEMENTS

**11.0.6 Demos and Q&A with the IBM
Product Team**



GoToWebinar Control Panel



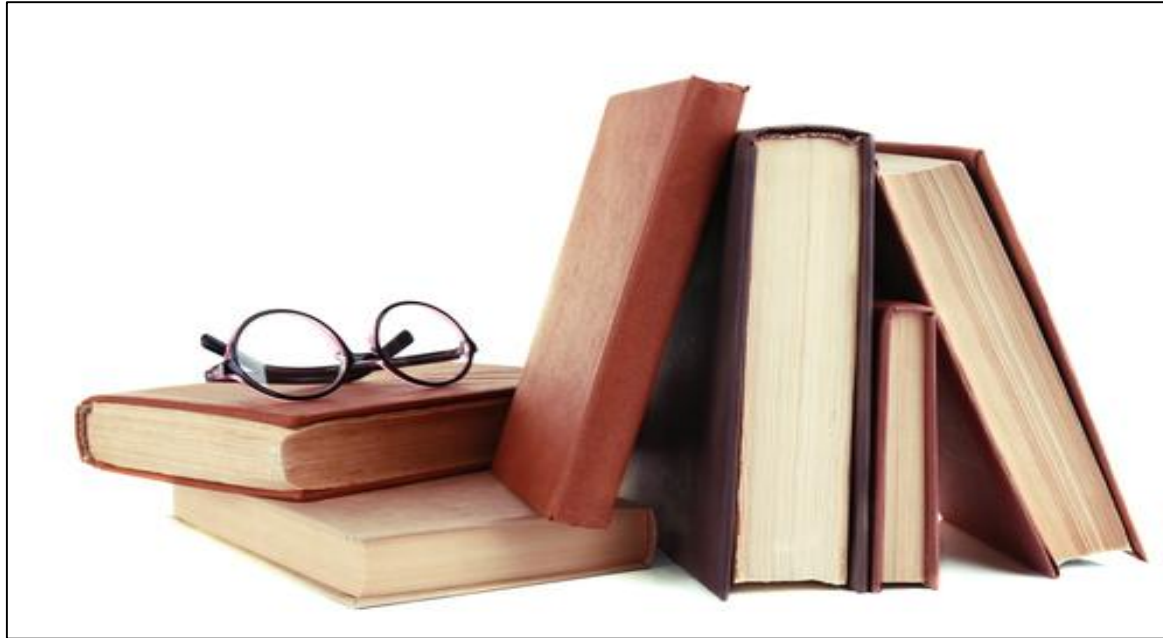
Click arrow to restore full control panel



Submit questions here

Presentation Slide Deck

<http://www.senturus.com/resources/>



RESOURCE LIBRARY

An extensive, free library of past webinars, demonstrations, whitepapers, presentations, helpful hints, and more.

Agenda

- Introductions
- What's New in R6
- FAQs & Useful Links
- Senturus Overview
- Additional Resources
- Q&A

INTRODUCING...TODAY'S PRESENTERS



Nic Leduc
Product Manager
Cognos Analytics



Jim Frazier
VP of Client Solutions
Senturus, Inc.

Poll #1

Why have you not upgraded to Cognos Analytics yet?

- Already upgraded
- Unable to prove ROI/lack of budget
- Lack of expertise/need help with migration
- Concerns about stability &/or unsupported DB or SW
- Need to wait for user training on new UI



IBM Cognos Analytics

What's new in R6

Business Analytics, IBM Analytics Group

Nicolas.Leduc@ca.ibm.com

Offering Management

March 2017

Factors shaping the future



SELF-SERVICE ANALYTICS

Trends:

Intuitive/Immersive User Experiences

Focus on Analytics & Discovery

Users Direct Data Preparation



DATA GOVERNANCE

Trends:

Data Governance

Business – IT Collaboration



SMARTER, MORE EMBEDDABLE ANALYTICS

Trends:

Operationalizing BI & Analytics

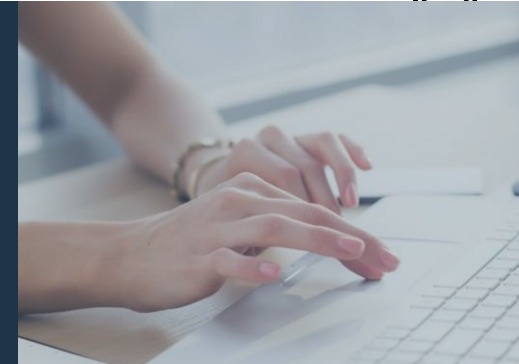


Cognos Analytics

Built for me, designed for
us

- Empowers users to make analytics part of their daily actions
- Improves personal productivity, eliminates IT backlog

INTUITIVE



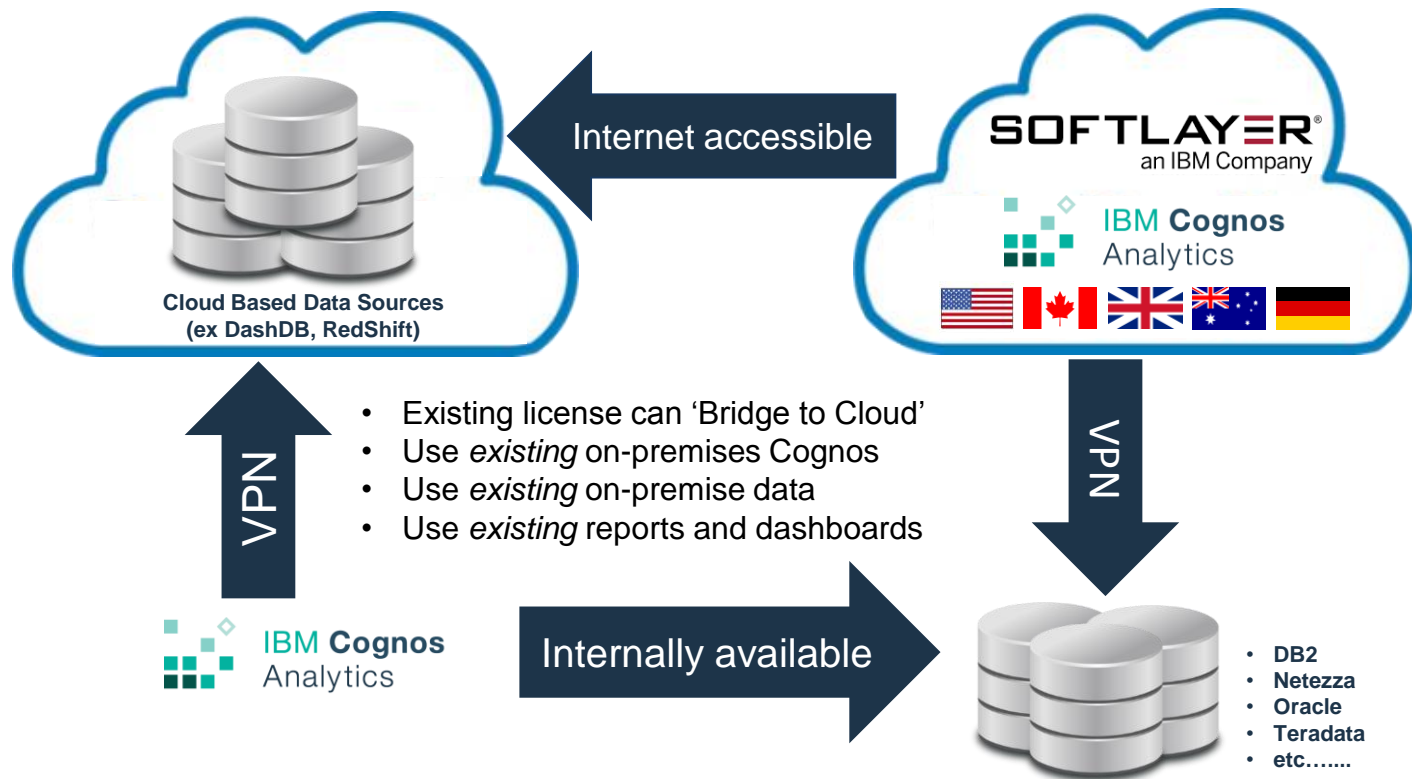
BUILT IN
INTELLIGENCE



SELF SERVICE

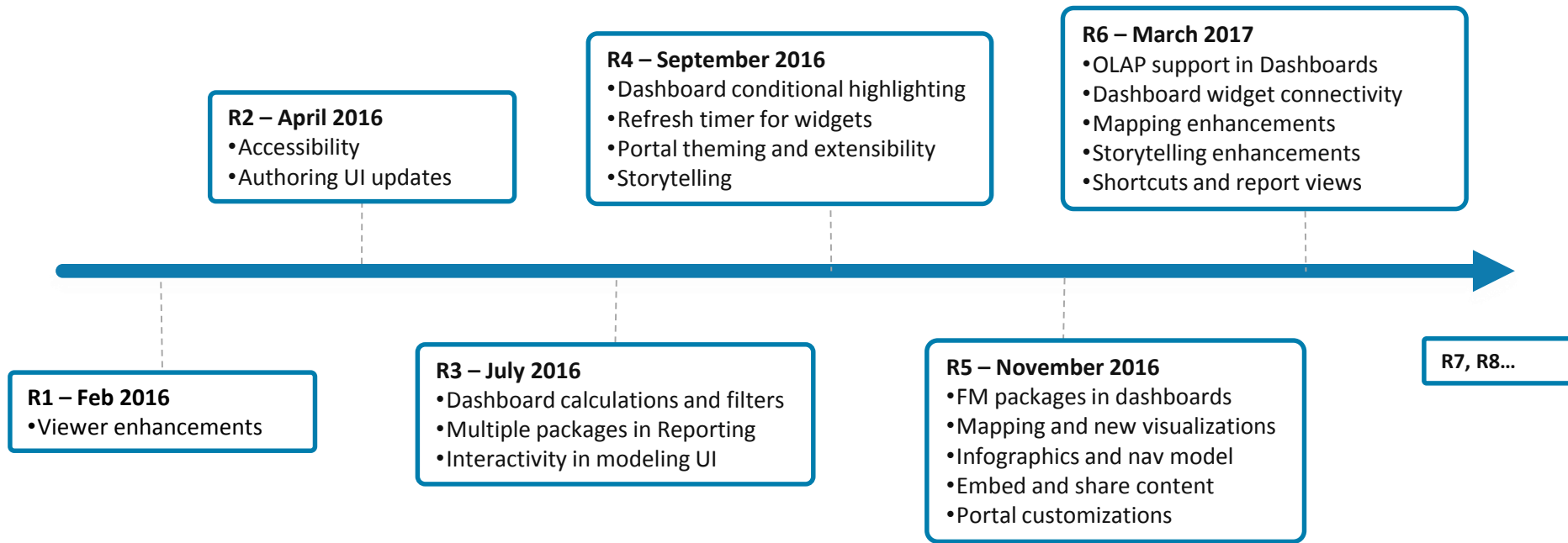


Available On-Cloud and On-Premises



Cognos Analytics releases

- Continuous delivery for on-prem and on the Cloud
- Contains defect fixes and enhancements
- Installs on top, it preserves your settings and config





WHAT'S NEW IN 11.0.6 (R6)

Highlights – R6

Make the old new

- Direct access to OLAP packages in Dashboards
- Lineage & Business Glossary in Interactive Viewer
- Shortcuts
- Advanced Routing Rules for Uploaded Files and Data Modules

Easier & easier to use

- Widget communication control
- Change template for a tab or scene
- Enhanced Data Module support for queries, calculations, filters and drill through
- Enhanced TM1 / Planning Analytics interoperation

See things clearly with Visualization Enhancements

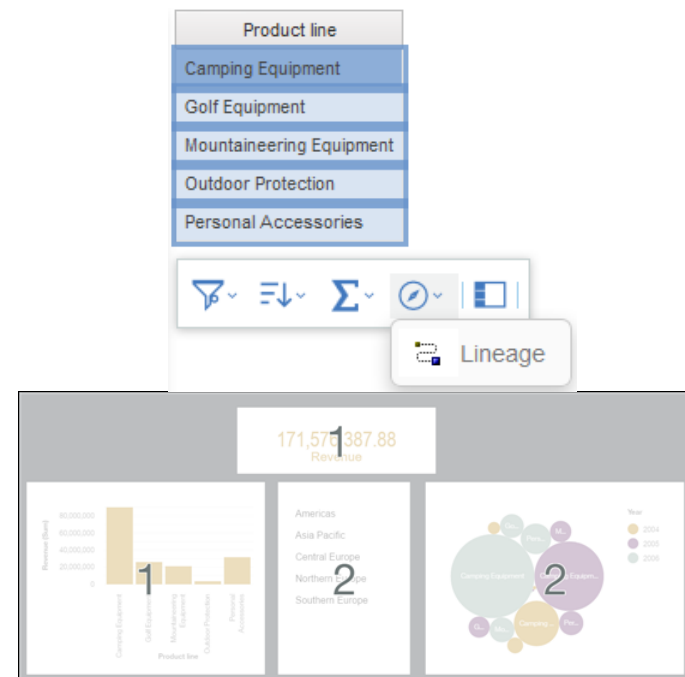
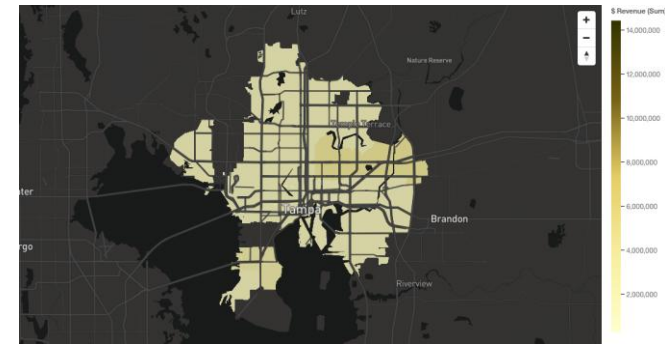
- Mapping Enhancements

Make it your own

- Custom Folders
- Embed/Share directly from report, saved output and dashboard
- Multi-Tenancy updates
- BlueID Support

Communicate Findings through Storytelling

- New templates
- New animations
- Smart naming in pins and timeline



11.0.6 (R6) highlights - Dashboarding

■ Make the old new

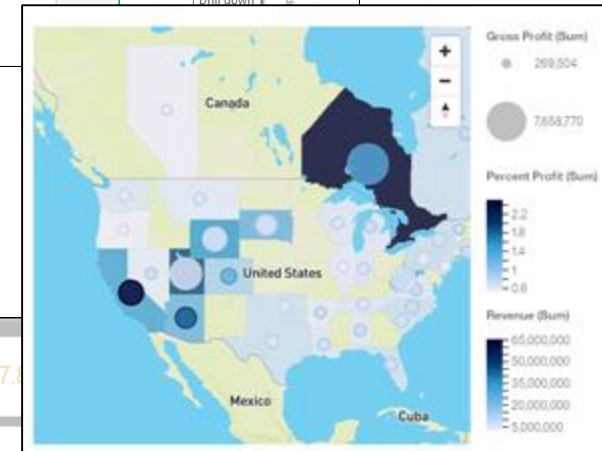
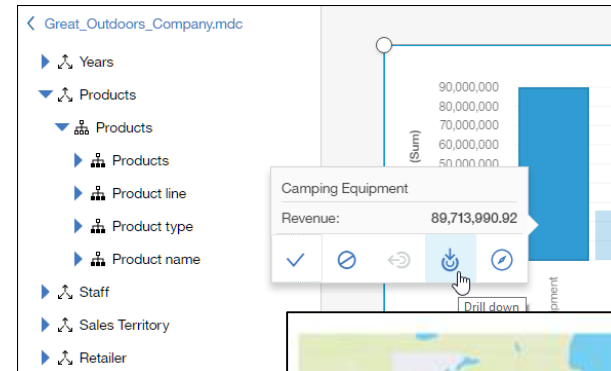
- Access to OLAP FM packages (DMR, PowerCubes, TM1, Dynamic Cubes, Essbase cubes, MSAS cubes)

■ Analytic Gestures and Visualizations

- Disconnecting widgets
- Mapping enhancements

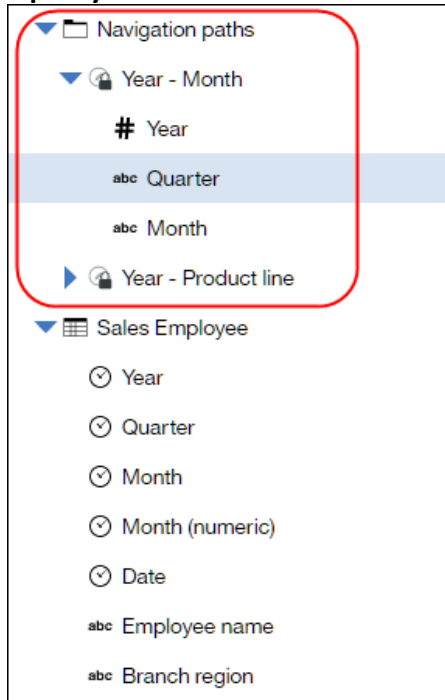
■ Ease of use

- Summaries on new grid widget
- Show nav paths in metadata tree
- Better scaling for text widgets

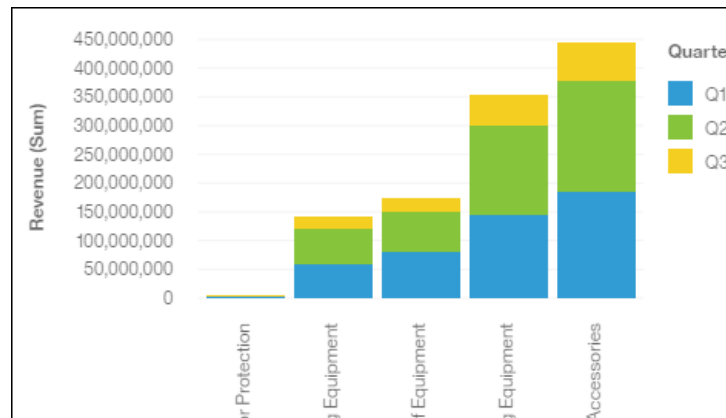


11.0.6 (R6) highlights – Dashboarding

Navigation paths are now displayed in the tree

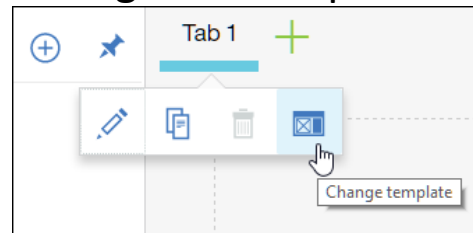


Sort on stacked or clustered charts

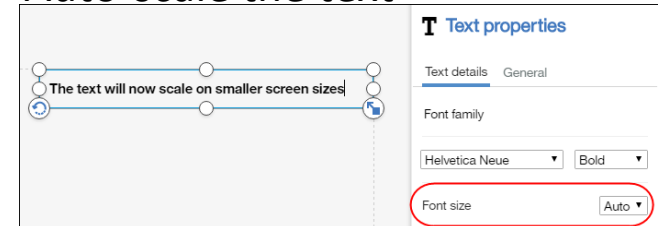


Filter on date fields with blanks

Change the template

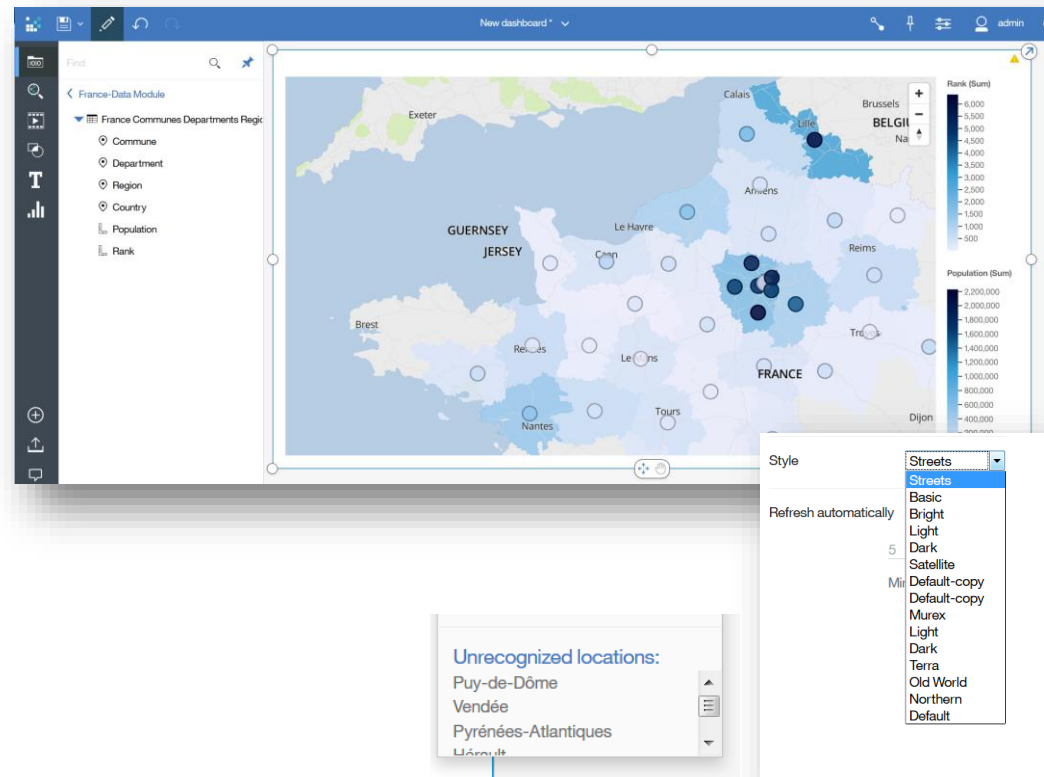


Auto-scale the text



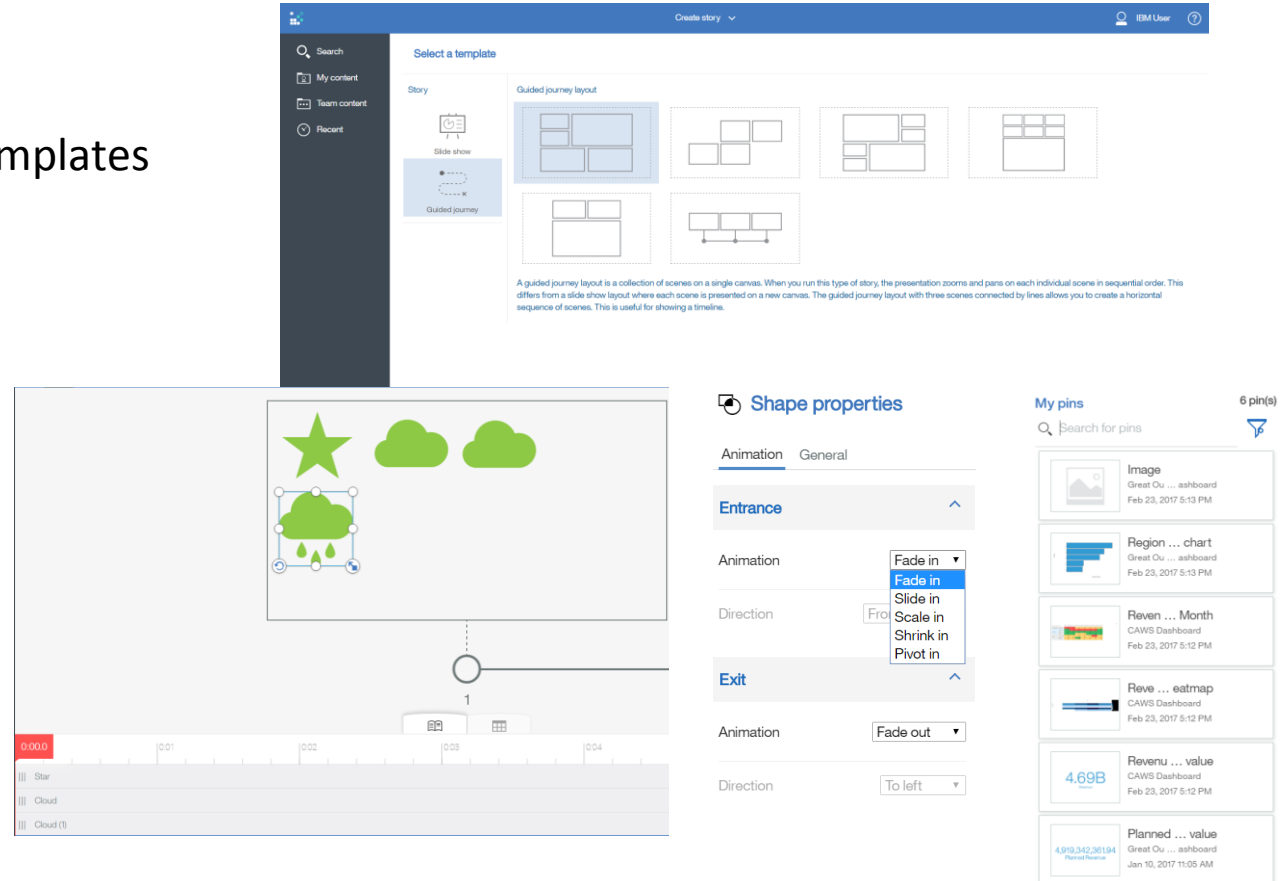
11.0.6 (R6) highlights - Mapping

- Pitney Bowes Polygons focusing on multiple admin boundaries
 - National: Country
 - Admin 1: States, Provinces etc.
 - Admin 2: Counties, Cities etc.
 - Admin 3 - 5: Precinct, Village, Subarea, Parish, townships, communes etc.
- Postal code support
- New map styles
- 'Refine Region' data slot to disambiguate locations
- Ambiguous and unrecognized regions list



11.0.6 (R6) highlights - Storytelling

- New Guided Journey Templates
 - Scale
 - Zoom
 - Pivot
- Pin enhancement
 - Smart Names
 - Enhanced Find
- Timeline enhancements
 - Change scene template
 - Order adjusting
 - Smart Names



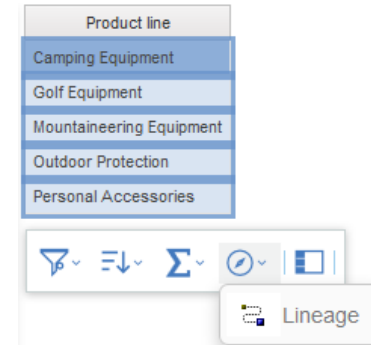
11.0.6 (R6) highlights - Reporting

■ Interactive viewer improvements

- Performance
- Lineage and Business Glossary
- Freeze List column headings

■ Data module support

- Query editing
- Create custom calculations
- Parameterized filters
- Drill-through



Product line	Product type	Product	Introduction date
Camping Equipment	Packs	Canyon Mule Extreme Backpack	Mar 5, 2003 12:00:00 AM
Camping Equipment	Packs	Canyon Mule Journey Backpack	Feb 15, 2001 12:00:00 AM
Camping Equipment	Packs	Canyon Mule Weekender Backpack	Feb 15, 2001 12:00:00 AM
Camping Equipment	Sleeping Bags	Hibernator	Feb 15, 2001 12:00:00 AM
Camping Equipment	Sleeping Bags	Hibernator Camp Cot	Mar 5, 2003 12:00:00 AM
Camping Equipment	Sleeping Bags	Hibernator Extreme	Oct 26, 2006 12:00:00 AM
Camping Equipment	Sleeping Bags	Hibernator Lite	Mar 5, 2003 12:00:00 AM
Camping Equipment	Sleeping Bags	Hibernator Pad	Feb 15, 2001 12:00:00 AM

11.0.6 (R6) highlights – Core App

- Custom Folders
- Shortcut and Create Report View
- Embed/Share report, saved output and dashboard

The screenshot displays the IBM Cognos Analytics interface. On the left, a sidebar shows navigation options: Search, My content, Team content, HR, and Recent. The main area is divided into two panels. The top panel, titled 'Custom Role', shows details for a role created on 2/9/2017, with tabs for General, Customization, Members, and Permissions. The bottom panel, titled 'Custom folder', shows a breadcrumb path: Team content > Department > Operational > HR. On the right, a 'Reports' panel lists several reports, including 'Customer claim analysis', 'Customer lifetime value analysis', and 'HRTemplat'. A context menu is open over the 'HRTemplat' report, showing options: Run as, Edit report, Create report view, View versions, Properties, Copy or move, Create shortcut, Embed, Share, and Delete.

EMPLOYEE Satisfaction BY DEPARTMENT:

EMPLOYEE RANKINGS AND TERMINATIONS

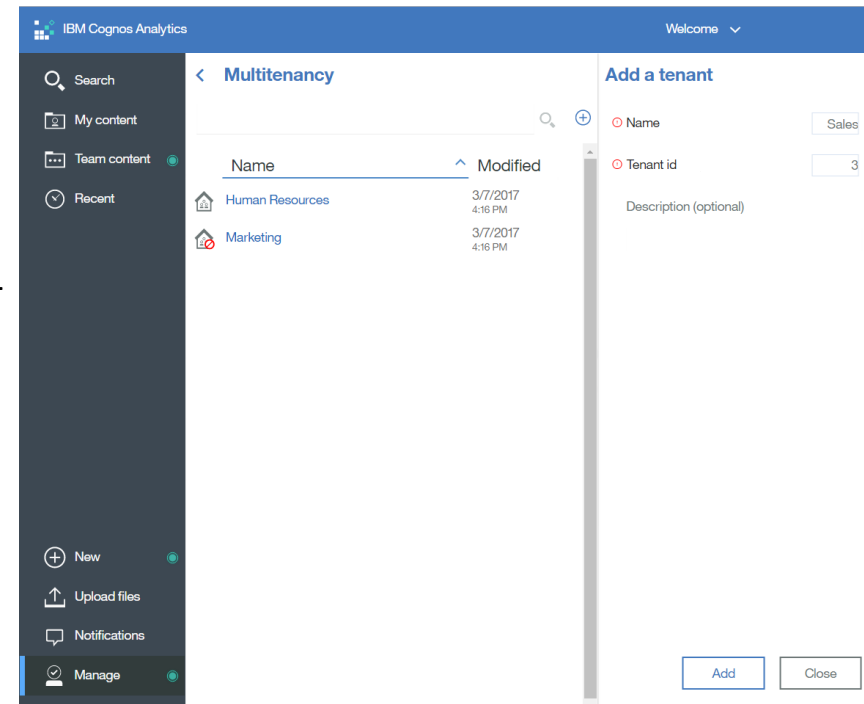
	Poor	Satisfactory	Good	Very Good	Excellent	Termination %
Finance	2.7%	21.7%	37.9%	18.9%	0.9%	1.8%

EMPLOYEE COMPENSATION

Position	Position Code	Salary	Commission %	Bonus \$
Accountant 1	2400	\$47,308	19.2%	\$12,162
Accountant 2	2500	\$91,385	22.8%	\$45,850
Accounting Clerk	2600	\$33,308	19.5%	\$17,099
Accounting Manager	2300	\$108,385	23.8%	\$17,918
Budget Analyst	2100	\$50,000	28.3%	\$12,468
Controller	1300	\$168,923	0.0%	\$0
Finance Manager	1900	\$131,846	27.8%	\$21,234
Financial Analyst	2000	\$67,000	33.3%	\$21,514
Payroll Clerk	2200	\$36,538	20.7%	\$9,818

11.0.6 (R6) highlights – Platform

- Enhanced support for Advanced Routing Rules
 - Uploaded File and Data Modules
- New IBM BlueID Authentication provider
 - Always federation to Identity Providers that follow SAML 2.0 specification
- New Upgrade features
 - Allows you to specify files that you need to preserve on upgrade
- Multi Tenancy in Cognos Analytics
 - Allows you to manage multi tenancy in Cognos Analytics



11.0.6 (R6) highlights – Data Access

■ Enhanced TM1 / Planning Analytics interoperation

- Support for REST connections to PA
- Support for PA hierarchies
- Support for localized PA cubes

■ New Sources

- Google Cloud SQL
- Google Big Query

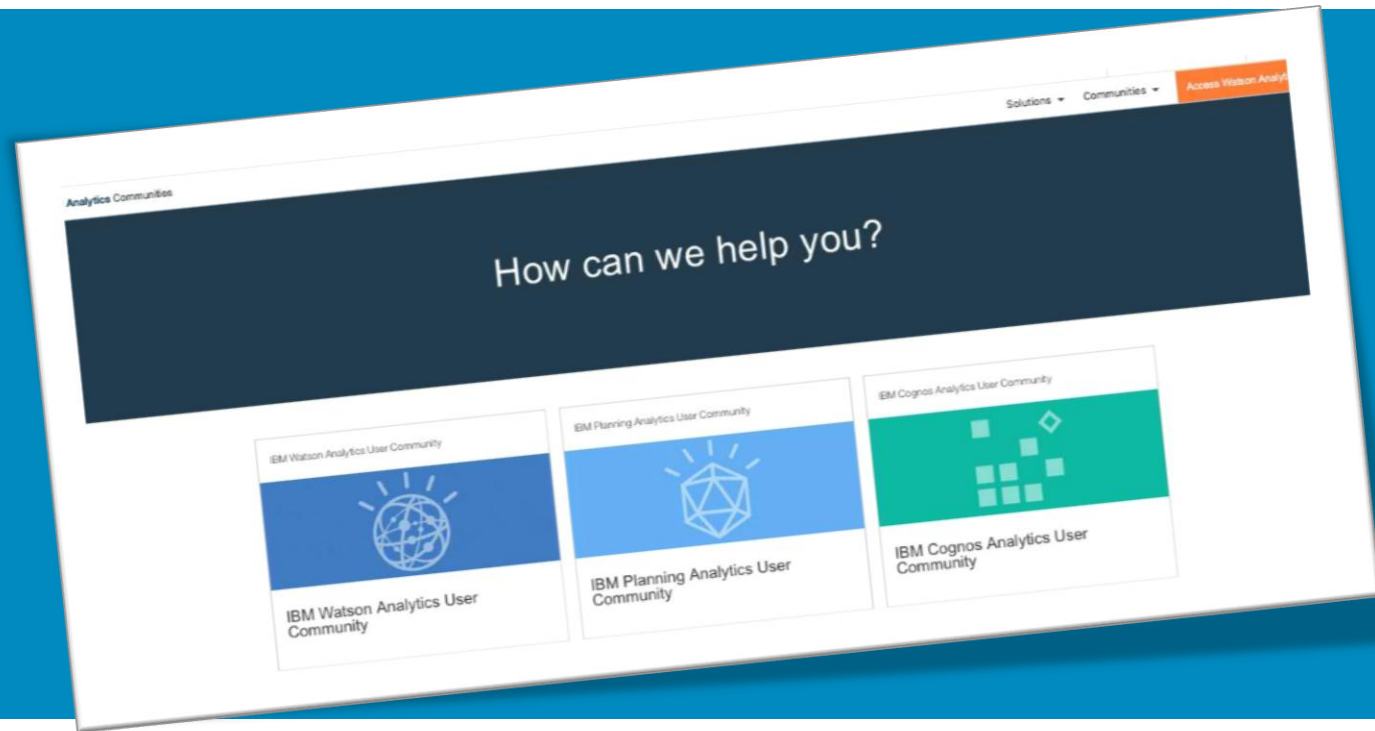
■ New Versions

- Cloudera Impala 2.6
- Teradata 16
- ORACLE 12C2
- SAP Hana 2
- Microsoft SQL Server Analysis Services 2016
- Informix 12.10xC8



Building Community | Always-on

- How-to Videos
- Expert Blogs
- Discussion Forums
- Self-service Support



<https://www.ibm.com/communities/analytics/>



A focused set of offerings designed to succeed with analytics

World of Watson will showcase our continuous delivery and preview :

Cognos Analytics

- Interactive visualization and mapping
- Dashboards directly off Framework Manager packages
- Storytelling – instant infographic
- Embed and share
- Navigational paths
- More enhancements

Watson Analytics

- Interactive visualization and mapping
- 20 new storybooks
- Cognos FM package connection
- Mobile
- Post load joins
- Influencer detection in Watson Analytics for Social Media

<https://www.ibm.com/communities/analytics/>

Why IBM Analytics?

Common set of user experiences

Shift in skillset

Self service data preparation

IBM synergies i.e. Watson, Weather

Partnerships i.e. Twitter, Apple, Datawatch, Mapbox

IBM Cognos Analytics

Self service analytics and managed reporting

Search based UX and intent driven automation

Enterprise class security and governance

Ease of sharing and re-using content

Rapid function delivery and deployment flexibility

IBM Watson Analytics

Natural language dialog

Unbiased analysis

Predictive analytics

Social trends and relationships

Analytic accelerators

Useful links

- Main Cognos Analytics page
 - <http://www.ibm.biz/cognosanalytics>
- Community and blog posts
 - <https://www.ibm.com/communities/analytics/cognos-analytics/>
- Free trial
 - <https://ca-trial.mybluemix.net/>
- Knowledge Center / Documentation
 - http://www.ibm.com/support/knowledgecenter/SSEP7J_11.0.0/
- Upgrade Central
 - <http://www-01.ibm.com/support/docview.wss?uid=swg21624935>
- Videos
 - <https://www.youtube.com/user/Analyticszone/videos>



SENTURUS

ADDITIONAL RESOURCES

Upgrade Assistance - Two Options

Our dedicated integration and upgrade staff provides expertise and guidance to smoothly migrate your system to a stable platform with minimal impact on end users.

- Quick Start
 - Installation and configuration of development environment plus full documentation
 - \$4499
- Full Upgrade Implementation
 - Full service implementation across all appropriate environments
 - Free estimate with completion of short questionnaire

Read details here: <http://www.senturus.com/ibm-cognos-upgrade-services/>

Contact us at: info@senturus.com or 888 601 6010 ext. 85

BI Concierge Service

BI Expertise When and How You Need It

- Work for you full- or part-time
- Build BI knowledge and best practices into your team
- Jumpstart a project or new capabilities
- Address variable workloads with operational costs
- Assist with software upgrades and migrations
- Manage projects

<http://www.senturus.com/bi-concierge-service/>

Other Resources

Preparing for Cognos Analytics V11

<http://www.senturus.com/resources/preparing-for-cognos-analytics-v11/>

Under the Hood with Cognos Analytics R5: Say Hello to Portal Tabs Replacement

<http://www.senturus.com/resources/under-the-hood-with-cognos-analytics-r5/>

What You Need to Know Before Upgrading to Cognos Analytics

<http://www.senturus.com/resources/what-you-need-to-know-before-upgrading-to-cognos-analytics/>

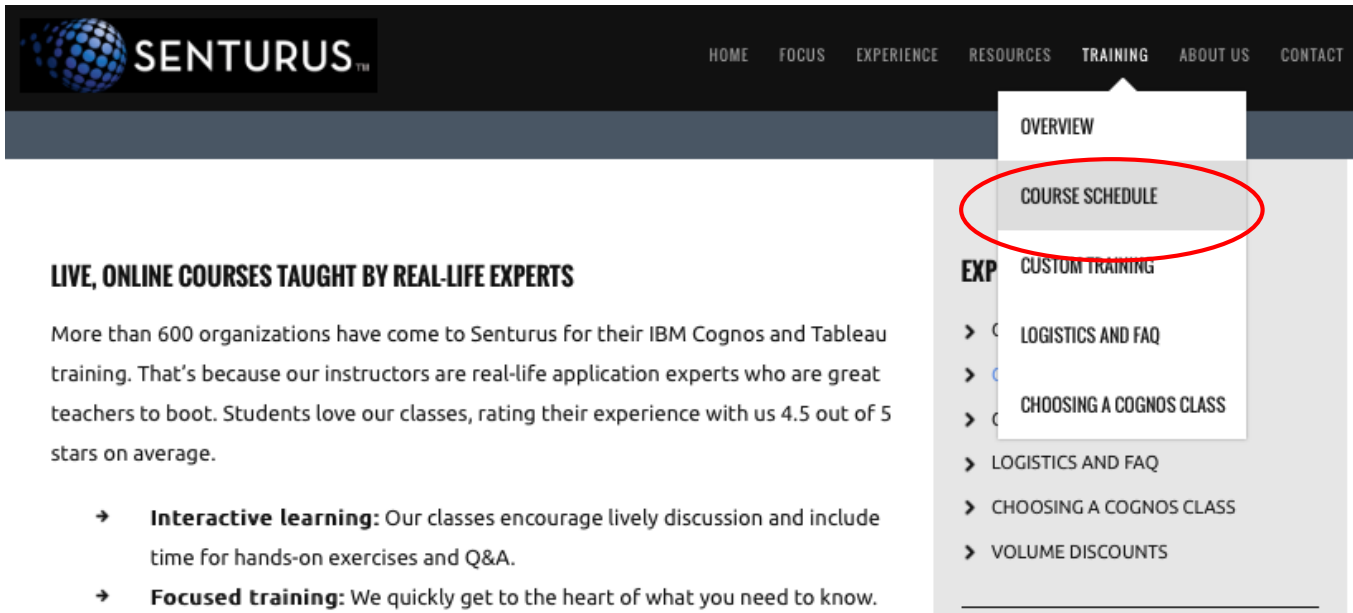
Data Acquisition Storytelling in Cognos Analytics

<http://www.senturus.com/resources/data-acquisition-storytelling-in-cognos-analytics/>

Cognos Analytics: Using License Roles to Specify Permissions

<http://www.senturus.com/blog/cognos-analytics-using-license-roles-specify-permissions/>

Cognos Training Options - New V11 Classes



SENTURUS™ HOME FOCUS EXPERIENCE RESOURCES TRAINING ABOUT US CONTACT

OVERVIEW

COURSE SCHEDULE

EXP CUSTOM TRAINING

LOGISTICS AND FAQ

CHOOSING A COGNOS CLASS

LOGISTICS AND FAQ

CHOOSING A COGNOS CLASS

VOLUME DISCOUNTS

LIVE, ONLINE COURSES TAUGHT BY REAL-LIFE EXPERTS

More than 600 organizations have come to Senturus for their IBM Cognos and Tableau training. That's because our instructors are real-life application experts who are great teachers to boot. Students love our classes, rating their experience with us 4.5 out of 5 stars on average.

- **Interactive learning:** Our classes encourage lively discussion and include time for hands-on exercises and Q&A.
- **Focused training:** We quickly get to the heart of what you need to know.

PLATFORM	VERSION	TOOL	TITLE	DATE
IBM COGNOS	11.0.5	COGNOS ANALYTICS	SELF-SERVICE DATA MODULES AND DASHBOARDING IN V11	APR 24
IBM COGNOS	11.0.5	COGNOS ANALYTICS	PROFESSIONAL REPORT AUTHORING IN V11	MAY 01 - MAY 02
IBM COGNOS	11.0.5	COGNOS ANALYTICS	ADVANCED REPORT AUTHORING IN V11	MAY 03 - MAY 04
IBM COGNOS	11.0.5	COGNOS ANALYTICS	V11 NEW FEATURES FOR EXPERIENCED AUTHORS	MAY 08
IBM COGNOS	11.0.5	COGNOS ANALYTICS	DIMENSIONAL REPORT AUTHORING IN V11	MAY 09 - MAY 10
IBM COGNOS	11.0.5	COGNOS ANALYTICS	SELF-SERVICE DATA MODULES AND DASHBOARDING IN V11	MAY 31



SENTURUS

WHO WE ARE

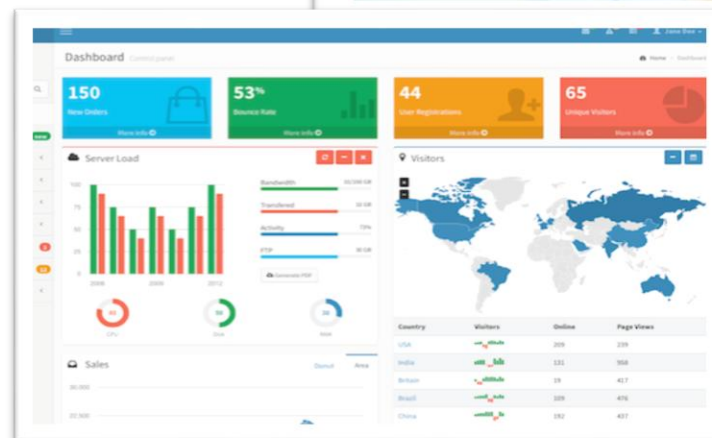
Business Analytics Consultants

Bridging the Gap Between Data & Decision Making



Business Analytics Architects

- Dashboards, Reporting & Visualizations
- Data Preparation & Modern Data Warehousing
- Self-Service Business Analytics
- Big Data & Advanced Analytics
- Planning & Forecasting Systems
- Proprietary Analytics Connector Software



1000+ Clients, 2000+ Projects, 16+ Years



SEPHORA



KELLY-MOORE
PAINTS™



fb FREMONT BANK



CRC
HEALTH GROUP



NETGEAR®
Connect with Innovation™

U.S. AIR FORCE

Genentech
A Member of the Roche Group



National
Semiconductor

KORBEL®
CALIFORNIA CHAMPAGNE



CENTRAL
Garden & Pet

lisi AEROSPACE



MEYER®

GILEAD



Abbott



BIO-RAD

TriNet
Ambitions realized™



shutterfly®

PENTAIR



More Free Resources:

<http://www.senturus.com/resources/>



UPCOMING EVENTS



RESOURCE LIBRARY



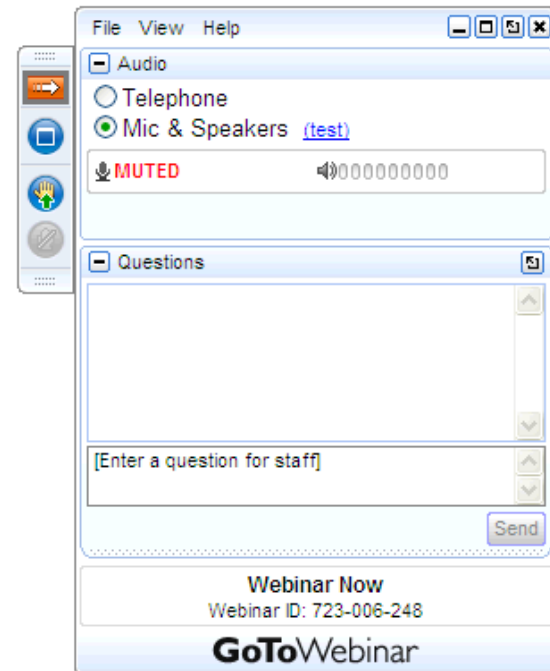
BLOG

Q&A

If your question or issue is broader than what can be answered today, contact us at

info@senturus.com

and we will set up a free consultation.



Thank You!

www.senturus.com
info@senturus.com
888 601 6010



Copyright 2017 by Senturus, Inc.
This entire presentation is copyrighted and may not be
reused or distributed without the written consent of
Senturus, Inc.

