



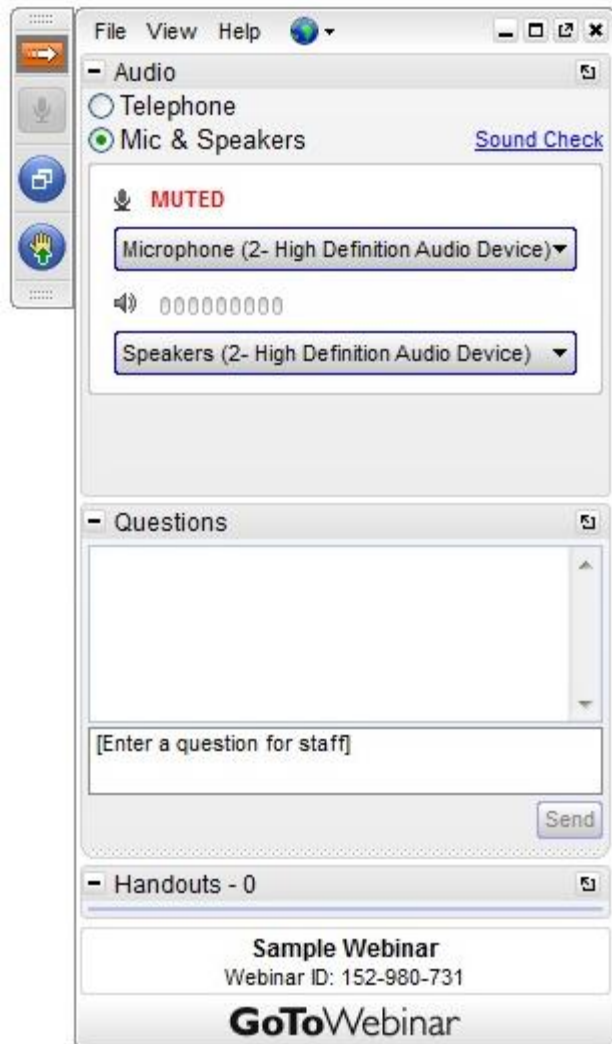
SENTURUS

UPGRADING TO COGNOS ANALYTICS: WHAT YOU NEED TO KNOW

**Release 4: Installation, Configuration
& Architectural Considerations**



GoToWebinar Control Panel



Click arrow to restore full control panel



Submit questions here



RESOURCE LIBRARY

An extensive, free library of past webinars, demonstrations, whitepapers, presentations, helpful hints, and more.

Today's Agenda

- Introduction
- Senturus Overview
- Prerequisites
- Installation Options
- Gateway/Web Servers
- Companion/Legacy Tools Status
- Odds and Ends
- Release Schedule
- From the Labs
- Additional Resources
- Q&A

Introduction: Today's Presenters



Todd Schuman

Practice Lead
Installations, Upgrades,
and Optimization
Senturus, Inc.



Jim Frazier

VP of Client Solutions
Senturus, Inc.



SENTURUS

WHO WE ARE

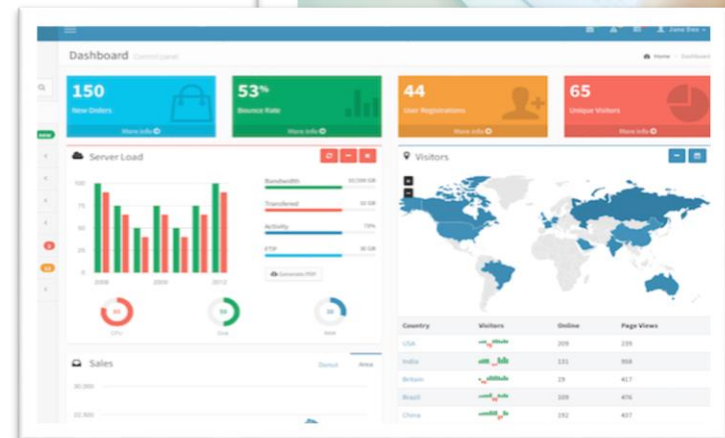
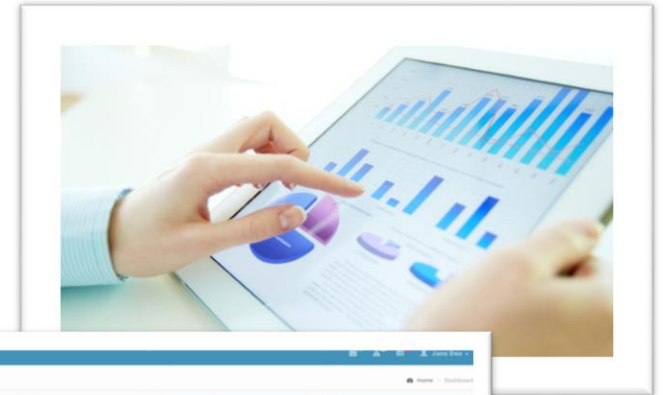
Business Analytics Consultants

Bridging the Gap Between Data & Decision Making



Business Analytics Architects

- Dashboards, Reporting & Visualizations
- Data Preparation & Modern Data Warehousing
- Self-Service Business Analytics
- Big Data & Advanced Analytics
- Planning & Forecasting Systems



1000+ Clients, 2000+ Projects, 16+ Years



SEPHORA



KELLY-MOORE
PAINTS™



fb FREMONT BANK



CRC
HEALTH GROUP



NETGEAR®
Connect with Innovation™

U.S. AIR FORCE

Genentech
A Member of the Roche Group



National
Semiconductor

KORBEL®
CALIFORNIA CHAMPAGNE



lisi AEROSPACE



MEYER®



BIO-RAD

TriNet
Ambitions realized™



shutterfly®



Poll

Are you planning on upgrading/migrating to Cognos Analytics version 11?

- Yes, in the next 3 months
- Yes, within the next 4-6 months
- Yes, within the next 7-12 months
- TDB - we will create a dev/test environment first
- Not sure/never



SENTURUS

PREREQUISITES

Prerequisites

Supported Software

<http://www-01.ibm.com/support/docview.wss?uid=swg27047186>

IBM Cognos Analytics 11.0.4

Requirements by Type	Requirements by Platform
Operating Systems	AIX
Software (including application servers, data sources and web browsers)	Linux
Hardware	Mobile OS
Hypervisors	Solaris
	Windows

Prerequisites - Operating Systems

- Windows Server
 - 2008
 - 2012
- Red Hat (RHEL) 6.5 & 7.5
 - IBM z Systems
 - POWER System Big/Little Endian
 - x86-64
- SUSE (SLES) Base
 - IBM z Systems
 - X86
- Ubuntu 14.04 LTS Base
 - POWER System - Little Endian
 - x86-64



Prerequisites -- Databases

- Content Server Databases
 - SQL Server 2012, 2014
 - Oracle 11g R2, 12c R1
 - DB2 (10.1, 10.5, 11.1), Advanced Workgroup Server Edition (10.5)
- Data Source Databases
 - SQL Server 2008, 2012, 2014, 2016
 - Oracle 11g, 12c
 - DB2 9.7, 10.1, 10.5, 11
 - Advanced Enterprise Server Edition
 - Advanced Workgroup Server Edition (10.5 only)
 - Enterprise Server Edition
 - Express Edition
 - Workgroup Server Edition



Prerequisites - Browsers

- Microsoft Internet Explorer 11
- Chrome 45
- Mozilla Firefox 45
- Apple Safari 9



Internet Explorer and Firefox are only browsers to support all new and legacy components



SENTURUS

INSTALLATION OPTIONS

Installation Options

Release 1

- Ready to run
- Expand
- Custom

Release 2&3

- Easy install
- Custom/expand



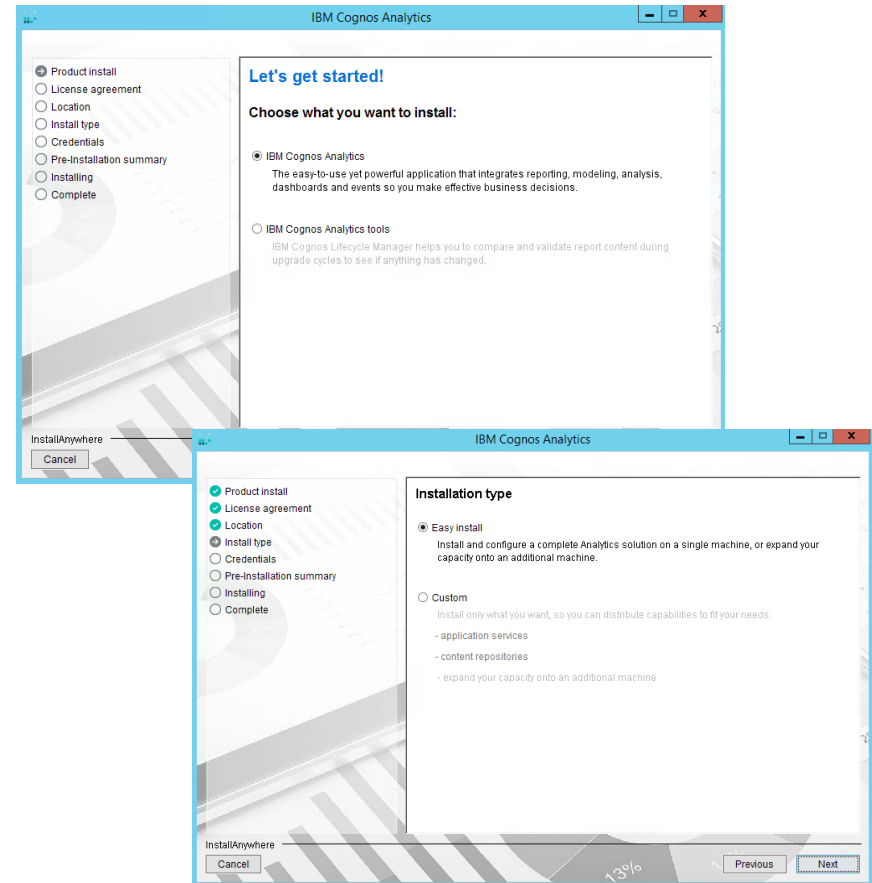
Installation Options

Release 4

- IBM Cognos Analytics
 - Easy Install
 - Custom

IBM Cognos Analytics tools

- Lifecycle Manager



Installation Options

Easy Install

- First install
- Connect and install

Similar to 10.2.2 Quick Start

- Informix 12.10 - installed and configured as Content Store
- Apache directory server - authentication provider

Note

- No companion/legacy tools
- Only run once per machine

The image displays two screenshots of the IBM Cognos Analytics installation wizard. The top window, titled 'IBM Cognos Analytics', shows the 'Create administrator credentials' step. It includes a progress bar on the left with steps: Product install, License agreement, Location, Install type, Credentials (selected), Pre-Installation summary, Installing, and Complete. The main area prompts the user to 'Sign in to Cognos Analytics with the administrator user ID you create here' and 'Please make a copy of your Cognos user ID and password and keep it in a safe location.' It contains three input fields: 'Cognos administrator user ID:', 'Password:', and 'Confirm Password:'. The bottom window, also titled 'IBM Cognos Analytics', shows the 'Connect and install' step. It includes the same progress bar. The main area prompts the user to 'Expand your capacity by installing a new Cognos server based on a running Cognos Analytics environment' and 'Enter your Cognos Analytics URL and Cognos Admin user credentials, from your running Cognos Analytics installation.' It contains three input fields: 'Cognos Analytics URL:' (with a placeholder 'http://hostname:port/lumber/bi'), 'Cognos administrator user ID:', and 'Password:'. Both windows have 'InstallAnywhere' and 'Cancel' buttons at the bottom left. The bottom window also has 'Previous' and 'Next' buttons at the bottom right.

Installation Options

First Install

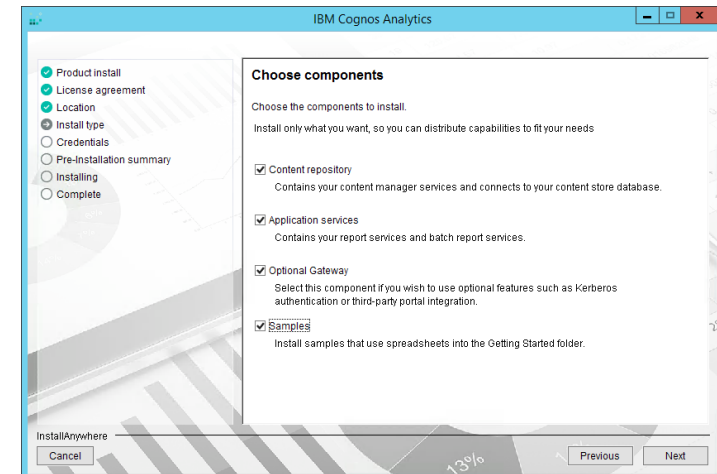
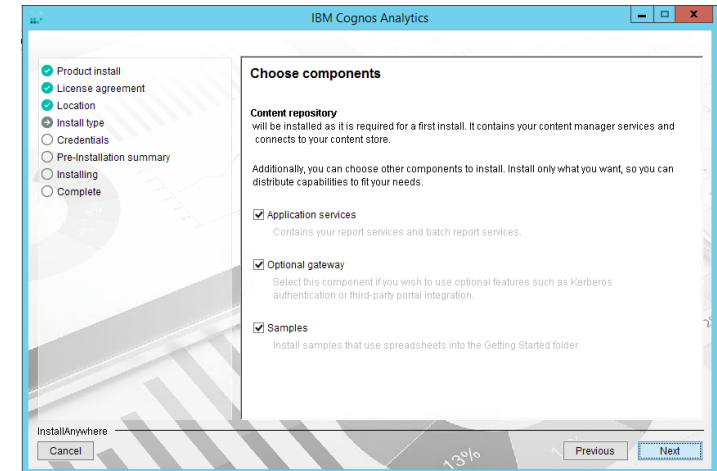
- Content repository - mandatory
- Choose additional components and/or samples

Connect and Install

- Select from 4 components
- Add failover content repository option

Note

- Samples now part of Server Install
- Content repository = content manager



Installation Options - Configurations

“Smarter” Cognos Configuration

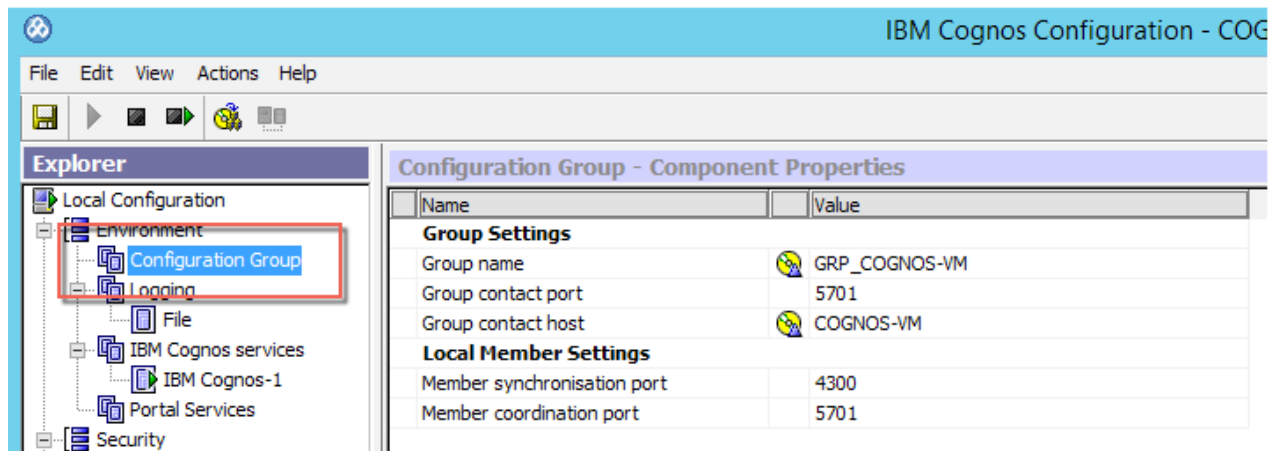
- Focus on back-end install and configurations
- Auto identify server name, no more local host
- Auto identify available open ports
- WebSphere liberty profile, default to 4096
- Configuration group
 - Group name
 - Group host and port



Installation Options - Configurations

Centralized Configurations

- Configuration server/zookeeper -> OUT
- Configuration group -> IN
 - Centralized concept
 - Install and configure from one “central” server
 - Eliminates need to make changes to every server in environment
 - Set language, java heaps, interactive/batch mode across all servers
 - Schedule interactive/batch timing based on schedules





SENTURUS

GATEWAY/WEB SERVER CONFIGURATIONS

Gateway/Web Server Configuration

"Optional" Gateway

- Required for Kerberos/single sign on (SSO)



IIS/IHS Redirects/Rules

- Application Request Routing Add-in (ARR)
- Allows old technologies to work well with the new rules for CA11 SSO, legacy SSO, headers and legacy studios

Reverse Proxy

- Allows new services that require load balancing to work with old legacy load balancing

http://www.ibm.com/support/knowledgecenter/SSEP7J_11.0.0/com.ibm.swg.ba.cognos.inst_cr_winux.doc/t_sso_actdirserver.html



SENTURUS

COMPANION/LEGACY TOOLS

Companion/Legacy Tools

Cognos 8/10 Studio/Tool	Cognos Analytics
Report Studio Workspace Advanced Viewer	Merged together
Query Studio	Hidden by default, announced for deprecation
Analysis Studio	Hidden by default, announced for deprecation
Cognos Workspace	Hidden by default, announced for deprecation
Event Studio	Hidden by default, no plans to enhance
Metric Studio	No change
Cognos for MSOffice	No change
Cognos Connection	Replaced with the new portal

Companion/Legacy Tools

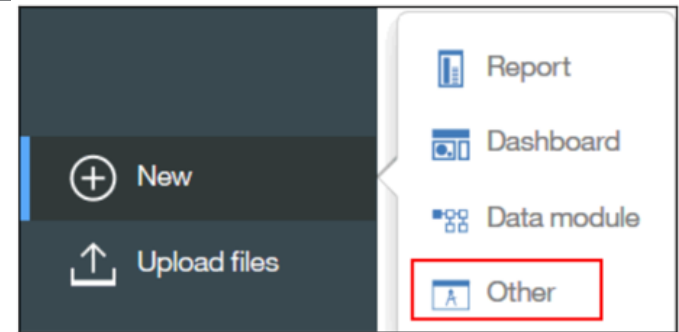
Easy Install

- Assume new customer
- Disables legacy switch






Custom

- Assumes existing customer
- Enables legacy switch

Note: Limited studio support for Chrome



Companion applications

-  Analysis Studio
-  Drill-Through Definitions
-  Event Studio
-  Query Studio
-  Workspace



SENTURUS

ODDS AND ENDS

Odds and Ends

JDBC Drivers

- Depreciated: `install_location\webapps\p2pd\WEB-INF\lib`
- New: `install_location\drivers`

Uploaded files, data sets

- Saved in the content store



Unique install paths - No more 64 or 32 bit file paths

- `C:\Program Files\IBM\Cognos\Analytics - Server`
- `C:\Program Files\IBM\Cognos\Model - FM`
- `C:\Program Files\IBM\Cognos\Designer - Cube Designer`



SENTURUS

RELEASES VS. FIX PACKS

Releases vs. Fix Packs

- No more fix packs
- Releases are full builds, available on Passport
- Run on existing install directory
- Goal is quarterly releases
 - General availability - 2015 ✓ ☐
 - R1 - Late March ✓ ☐
 - R2 - Early May ✓ ☐
 - R3 - Early July ✓ ☐
 - R4 - Mid September ✓ ☐
 - R5 - Late November /
early December, 2016





SENTURUS

FROM THE LABS

From the Labs

Release 5

- Removal of reverse proxy
- Built in load balancing of new REST API services
- Removal of server farm requirement

New Features?

- RAVE 2.0 - built in visualizations
- Mapbox
- FM direct access in dashboard

Prepare for Cognos Analytics v11: Two Options

Both Options Include

- Conversion of Query Studio Reports to Report Studio/Workspace Advanced using Motio PI Pro

Option 1: Upgrade Strategy

- Motio PI Pro 1 Year License
- Installation and Configuration of Motio PI Pro
- Conversion of QS content to RS+
- Upgrade strategy assistance including identifying:
 - Content that must be converted manually
 - HW and SW dependencies
 - Organization specific issues for v11
 - Upgrade assistance estimate

Option 2: Expert Support

- Motio PI Pro 1 Year License
- Installation and Configuration of Motio PI Pro
- Conversion of QS content to RS +
- 16 hours of support from the extended Senturus team of specialists, including upgrade/ installation practice

\$5,995 for either option

Upgrade Assistance - Two Options

Our dedicated integration and upgrade staff provides expertise and guidance to smoothly migrate your system to a stable platform with minimal impact on end users.

- Quick Start
 - Installation and configuration of development environment plus full documentation
 - \$4499
- Full Upgrade Implementation
 - Full service implementation across all appropriate environments
 - Free estimate with completion of short questionnaire

Read details here: <http://www.senturus.com/ibm-cognos-upgrade-services/>. For more information contact: info@senturus.com or 888 601 6010 ext. 85



SENTURUS

ADDITIONAL RESOURCES

Upcoming Events

www.senturus.com/events



PARTY WITH US AT THE TABLEAU CONFERENCE

PRIVATE RECEPTION

Monday, November 7, 8 - 10pm

Tuesday, November 8, 6 - 8:30pm



USING COGNOS AS A DATA SOURCE FOR TABLEAU

FASTER, MORE ACCURATE REPORTING & DATA SECURITY

Thursday, November 17, 2016 - 10am PT/ 1pm ET - 45 Minutes

More Free Resources: www.senturus.com

PREPARING FOR COGNOS ANALYTICS V11

Prep Now to Ensure a Smooth Upgrade Later

<http://www.senturus.com/resources/preparing-for-cognos-analytics-v11/>

INSTALLING COGNOS ANALYTICS V11

Get Under the Hood of V11

<http://www.senturus.com/resources/installing-cognos-analytics-v11/>

DEMO: REPORT AUTHORIZING IN COGNOS ANALYTICS

Get Under the Hood of V11

<http://www.senturus.com/resources/demo-report-authoring-cognos-analytics/>

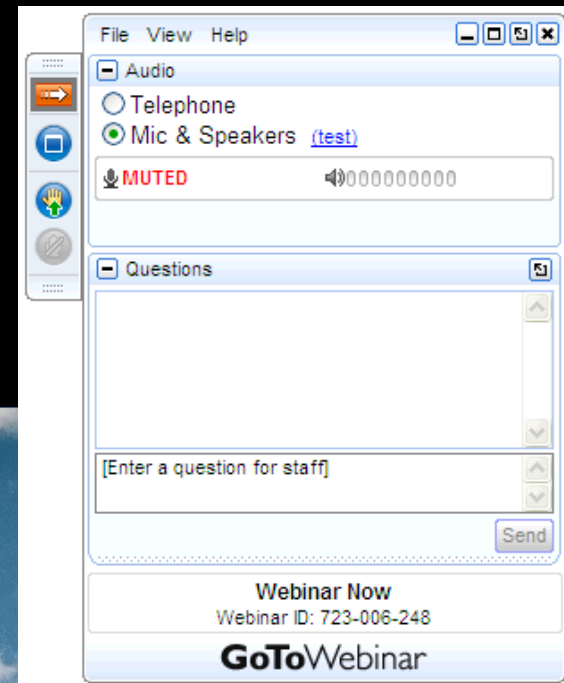
COGNOS ANALYTICS A CLOSER LOOK

New Report Authoring, Dashboarding and Modeling Tools

<http://www.senturus.com/resources/cognos-analytics-v11-closer-look/>



Q & A



Thank You!

www.senturus.com
info@senturus.com
888 601 6010



Copyright 2016 by Senturus, Inc.
This entire presentation is copyrighted and may not be
reused or distributed without the written consent of
Senturus, Inc.



Copyright 2016, Senturus, Inc., All Rights Reserved.